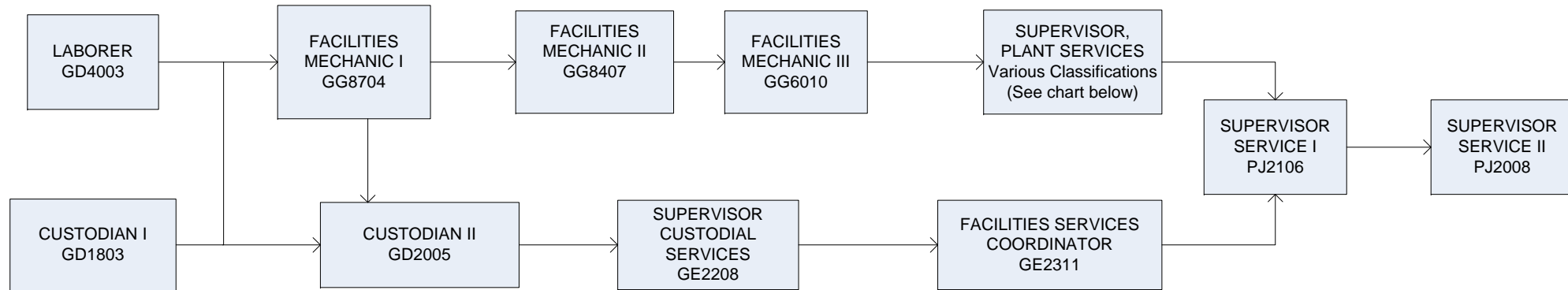


POSSIBLE ADVANCEMENT PROGRESSION CHART FOR LABOR/SERVICE CLASSIFICATIONS*



SUPERVISOR PLANT SERVICES CLASSIFICATIONS					
CLASS TITLE	JOB CODE	PAY GRADE	CLASS TITLE	JOB CODE	PAY GRADE
SUPV PLANT ALLIED SVCS	GG22	13	SUPV PLANT HOSP SYSTEMS	GG06	15
SUPV PLANT APART MAINT	GG99	13	SUPV PLANT HOSP SYSTEMS	GD88	16
SUPV PLANT ATHLETIC MAINT	GG61	11	SUPV PLANT HOSP SYSTEMS	GD89	17
SUPV PLANT CAMPUS	GG41	13	SUPV PLANT HOSP SYSTEMS	GD90	18
SUPV PLANT CARPENTRY	GG37	12	SUPV PLANT MOTORPOOL	GG54	13
SUPV PLANT CHILL WATER PLT	GG20	15	SUPV PLANT OFFSET	GG83	12
SUPV PLANT COM MAT SVCS	GG95	9	SUPV PLANT PHYSICS	GG94	18
SUPV PLANT HOSP CAPDEV	GG17	14	SUPV PLANT POWERPLANT	GG19	14
SUPV PLANT HOSP FLEET	GG02	13	SUPV PLANT PRINTING	GG86	11
SUPV PLANT HOSP LAUNDRY	GG13	11	SUPV PLANT PRINTING	GD93	12
SUPV PLANT HOSP SAFETY	GG03	15	SUPV PLANT PRINTING SVCS	GG38	10
SUPV PLANT HOSP SECURITY	GG53	12	SUPV PLANT RES HALL MAINT	GG98	15
SUPV PLANT HOSP SIGNS	GG16	12	SUPV PLANT UNW LAUNDRY	GG09	09
SUPV PLANT HOSP STORES	GG12	14	SUPV PLANT WATER PLANT	GG21	14

* Advancement to various Merit and Professional & Scientific classifications may require additional experience, training, certifications and/or education. Please review The University of Iowa Merit and Professional and Scientific classification descriptions to determine specific requirements for each classification.