

Diagnostic Examination

Musicianship and Theory I (25:002)

Name: _____ ID#: _____

WRITTEN

Part I - PITCH

1) **Pitch and Clefs:** *Identify the following pitches.*

example

1. 2. 3.

2) **Chromatic pitches:** *Notate the following pitches on the staff.*

example

1. 2. 3.

3) **Enharmonics:** *Match the first note to its enharmonic equivalent, and circle the letter(s) with the correct matching pitch/pitches.*

example

1. a. b. c.

2. a. b. c.

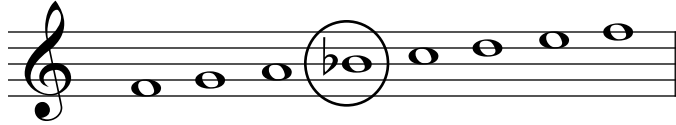
4) **Intervals** (*perfect [P], major [M], minor [m], augmented [A], diminished [d]*): *Identify the quality and size of each harmonic interval below.*

example

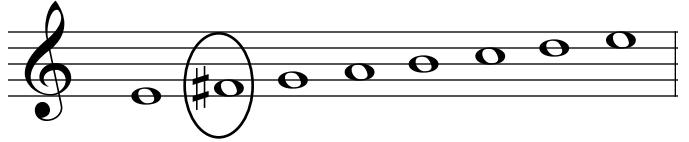
1. 2. 3. 4. 5.

5) Scales: Add the necessary sharps and/or flats in the following series of tones, in order to convert them to major or minor scales as indicated.

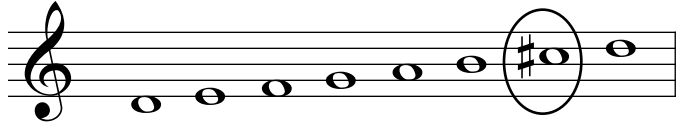
F major



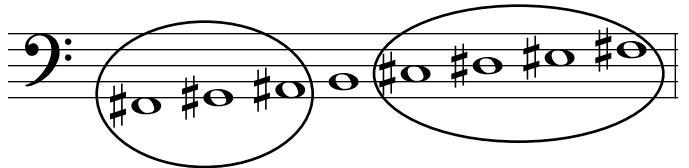
E natural minor



D melodic minor



F-sharp major

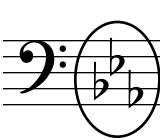


6) Key Signatures: Fill out the following key signatures in the staff as indicated.

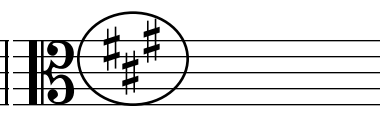
G major



E-flat major



F-sharp minor



7) Triads - I (major, minor, augmented, diminished): Identify the quality of the following triads.

example

A musical staff in treble clef showing a major triad (C4, E4, G4). The word "major" is written below the staff and circled.

1.



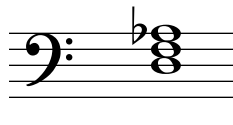
minor

2.



major

3.



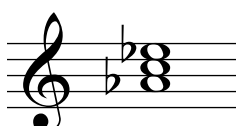
diminished

8) Triads - II: Create the following triads **above** the given notes as indicated.

example

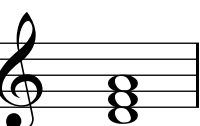
A musical staff in treble clef showing a major triad (C4, E4, G4) with the word "major" written below.

1.



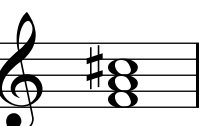
major

2.



minor

3.



augmented

Part II - RHYTHM

1) Values: Complete each measure by placing the correct rest/rests.

example

1.

2.

3.

2) Meter and Time Signatures: For each meter signature below, write the note value that represents the beat as you might conduct it.

example

1. Andante

2. Presto

3. Allegretto

Part III - NOTATION: Write the correct letter in the box.

	a	b	c	d	
1) Select the correct notation					b
2) Select the correct notation					a
3) Select the correct notation					a
4) Select the slur					b
5) Select the crescendo		<i>sfz</i>			a
6) Select the synonym for <i>counterpoint</i>	monody	harmony	polyphony	rhythm	c