

FY 2011 ANNUAL REPORT



TEAM ARCHAEOLOGY

Office of the State Archaeologist

The University of Iowa • Education • Outreach

• Burials Program • Archives • Highway Archaeology Program • **General Contract Program** • Geospatial Program • I-Sites • Office of the State Archaeologist

• The University of Iowa • Education • Outreach • Burials Program • Archives • **Highway Archaeology Program** • General Contract Program • Geospatial Program • I-Sites • Office of the State Archaeologist • The University of Iowa • Education • Outreach • **Burials Program** • Archives • Highway Archaeology Program

• General Contract Program • Geospatial Program • I-Sites • Office of the State Archaeologist • The University of Iowa • **Education** • Outreach • Burials Program • Archives • Highway Archaeology Program

• General Contract Program • **Geospatial Program** • I-Sites • Office of the State Archaeologist • The University of Iowa • Education • **Outreach** • Burials Program • **Archives** • Highway Archaeology Program • General Contract Program • Geospatial Program • **I-Sites** • Office

Office of the State Archaeologist
The University of Iowa

Cover notes:

During FY 2011, for the 3rd consecutive year, Team Archaeology led the OSA's statewide public outreach effort. Commencing in July and kicking off Iowa Archaeology Month 2010, the team, including riders participating in RAGBRAI and presenters along the route, communicated the value, interest, and significance of Iowa's past to the ride's national audience. Team members continued outreach efforts throughout FY 2011, offering programs at dozens of venues across the state (see Appendix B for details).

Table of Contents

Annual Report for FY 2011	1
Mission.	2
Student Success.	2
Achievements	2
Strengths and Resources	3
Fiscal Year 2011 Overview	4
The Year in Review	5
Academic Activities	6
Field Services Division	6
Education and Outreach Program	6
Research Division	9
Burials Program	9
Contract Services Division	11
General Contracts Program	11
Highway Archaeology Program	16
General Services Division	19
Curation and Documents Program	19
Geospatial Program	20
Information Technology Program	23
Publication Division	23
International Endeavors	23
Staff Leadership Service and Awards	24
Review of Fiscal Year 2011 Annual Work Plan Accomplishments	26
Summary	27
Fiscal Year 2012: Plans and Prospects	28
Budget for Fiscal Year 2011	30
Appendices	41
Appendix A: Office of the State Archaeologist Strategic Plan 2010–2016	42
Appendix B: Public Audio-Visual Presentations, Fiscal Year 2011	45
Appendix C: Papers Presented at Professional Meetings, Fiscal Year 2011	52
Appendix D: Publications Appearing in Print, Fiscal Year 2011	53
Appendix E: Service as a Board, Commission, or Committee Member, Fiscal Year 2011	55
Appendix F: Scientific Publications Produced by the Office of the State Archaeologist, Fiscal Year 2011	58

List of Figures

Figure 1. Map showing locations of Burial Program projects in FY 2011	10
Figure 2. Map showing spatial distribution of GCP project types and budgets by county	12
Figure 3. Pie charts showing distributions of UI-external funding in FY 2011 for GCP	13
Figure 4. Newly recorded archaeological site locations, FY 2011	21
Figure 5. Iowa Site File searches, FY 2011	22
Figure 6. Office of the State Archaeologist funding levels, Fiscal Years 1987–2011.	31
Figure 7. Comparison of UI General Education funding (GEF) allocation with Facilities and Administrative (F&A) costs generated for UI through OSA grant and contract activity, Fiscal Years 1996–2011	31
Figure 8. OSA FY 2011 Organizational Chart	38

List of Tables

Table 1. Office of the State Archaeologist Budgets, Fiscal Years 1987–2011	32
Table 2. University of Iowa General Education Fund Support for OSA Operations, Fiscal Year 2011.....	33
Table 3. Gifts and Return on Endowments,	33
Fiscal Year 2011	33
Table 4. Funding Received from Fees and Contributions, Fiscal Year 2011.....	33
Table 5. Funding Received for Sponsored Research and Services, Fiscal Year 2011.....	34
Table 6. Permanent Staff Members, Fiscal Year 2010.....	37
Table 7. Complete Roster of Employees, Fiscal Year 2011	39
Table 8. Students Participating in OSA Activities, Fiscal Year 2011	40

Office of the State Archaeologist
The University of Iowa



MISSION

In fiscal year (FY) 2011 the Office of the State Archaeologist (OSA) continued its past success in meeting primary mission activities of developing, disseminating, and preserving knowledge of Iowa's human past through Midwestern and Plains archaeological research, scientific discovery, public stewardship, service, and education. The position of State Archaeologist was established in 1959; the Code of Iowa specifies the State Archaeologist shall be a member of the faculty of the Department of Anthropology at The University of Iowa (UI). Additionally, the OSA is an organized research unit of the University, meaning that the State Archaeologist, who is appointed by the Iowa State Board of Regents, heads the OSA and reports to the University's Vice President for Research and Economic Development. The State Archaeologist consults regularly with the OSA Advisory Committee, whose members include on- and off-campus colleagues, and with the OSA Indian Advisory Council, whose members include individuals from several tribes.

STUDENT SUCCESS

In addition to actively meeting its statutory responsibilities regarding tracking archaeological site location data, maintaining the State Archaeological Repository, and providing ancient burials protection, the OSA actively supports the UI academic mission. Various OSA staff, as adjunct faculty in the Department of Anthropology, offer courses on a variety of topics, mentor honor students and student interns, and serve on Ph.D. and M.A. degree committees. The OSA actively supports the use by UI undergraduate and graduate students of its archaeological, osteological, and comparative collections; scholarly documents; electronic databases; scientific instrumentation; and laboratory space for degree-related research. These resources regularly contribute to the educational experience of students in the departments of Anatomy and Cell Biology, Anthropology, Dentistry, Geography, Geoscience, History, and Radiology along with the programs of American Indian and Native Studies and Museum Studies. The OSA also regularly hosts visits from UI classes, offers courses in its laboratory-multimedia facility, employs work-study students majoring in a wide variety of dis-

ciplines, and supports career-building volunteering research opportunities for students.

ACHIEVEMENTS

During FY 2011, the OSA added considerably to its notable record of success of the past half century, during which the staff has published thousands of articles, monographs, research reports, and abstracts on Iowa archaeology. Staff members also have presented thousands of public programs throughout the state. The OSA has conducted archaeological and architectural history research in all counties of the state on sites of all types and time periods, supported by contracts, interagency agreements, grants, and field schools. The OSA coordinates all work pertaining to ancient burials in Iowa, in accordance with the landmark first-in-the-nation 1976 state law on protection and reburial of human remains. In addition, the OSA is the central data manager for all recorded Iowa archaeological sites, the central repository for Iowa archaeological collections, and coordinator of the Iowa avocational certification program.



An Early Archaic projectile point from southeast Iowa.



STRENGTHS AND RESOURCES

The core strengths of the OSA are:

- a highly experienced and motivated staff,
- ready accessibility for UI undergraduates as well as other students at all levels,
- a tradition of high-quality work,
- excellent relations with other state agencies and University offices, and
- extensive, accessible collections and other research and service resources.

The OSA's most important resource is its staff, a dynamic and highly qualified team that represents hundreds of years of experience in Midwest and Plains archaeology and cultural resource management. The

full-time staff currently includes four individuals with Ph.D.'s and an additional 18 with Master's degrees. Part-time staff members also have extensive archaeological experience; most have participated in at least one field school and completed a Bachelor's or Master's degree in anthropology or related field.

The OSA occupies a modern 13,000-square-foot facility located in the Clinton Street Building (CLSB) on the south side of the main University of Iowa campus. The University directly supports OSA's general administration, Education and Outreach, and Burials programs, and contributes to the Iowa Site File, documents, and collections management activities. Typically, 85 percent or more of the OSA activities, including most of its field research, are supported by external, non-University funding through contracts, grants, gifts, and fee-for-service arrangements.



FISCAL YEAR 2011 OVERVIEW

The OSA conducted a wide range of research, service, and educational programs and activities during FY 2011. As noted, the mission of the OSA is to develop, disseminate, and preserve knowledge of Iowa's human past through Midwestern and Plains archaeological research, scientific discovery, public stewardship, service, and education. Statutory authorization and administrative rules establish basic OSA functions, organization, and procedures (Code of Iowa 263B, Iowa Administrative Code 685). OSA administrative rules organize the office into five divisions: Field Services, Research, Contract Services, General Services, and Publications. The OSA utilizes the Management by Objective (MBO) approach to focus effort on high priority research, education, and public service projects related to overall office goals as defined by statute and strategic planning.

In 2010 the OSA updated its strategic plan to specify the means to accomplish major goals and guide activities through 2016 (Appendix A). OSA programs and staff activities strive to meet these broad strategic goals:

1. Create a learning experience about the human past that enriches the lives of undergraduates and helps them to become well-informed individuals, lifelong learners, engaged citizens, and productive employees and employers.
2. Promote graduate and professional student participation in OSA research through cooperation with University graduate and professional programs.
3. Strengthen and expand OSA partnerships with public constituencies to advance understanding and appreciation about the human past and stewardship of archaeological resources and showcase the societal benefits of archaeological research and teaching for the citizens of Iowa.
4. Recognize and illuminate the human diversity inherent in the past as manifested in the archaeological record and use that record for greater inclusion and participation of professionals and the public.
5. Strengthen the OSA's intellectual and cultural vitality within the University, Iowa, nationally, and internationally.

As a UI department and the focal point for Iowa archaeology, the OSA is active throughout the year and around the state. The following section describes highlights of the activities for FY 2011.



The Year in Review



ACADEMIC ACTIVITIES

During FY 2011, four OSA staff members served as adjunct faculty for the UI Department of Anthropology—John Doershuk, Stephen Lensink, Melody Pope, and Shirley Schermer.

Doershuk also held an adjunct faculty appointment in Anthropology at Cornell College, Mt. Vernon, Iowa. Doershuk taught the Cornell course, Introduction to Archaeological Field Methods, to 12 students during May 2011.

The OSA facilities, collections, and staff provided classroom enrichment for undergraduate students. Pope and OSA staff member Colleen Eck hosted the UI Geography class, Environmental Impact Analysis (45 students, April 2011).

A total of 25 students from the UI, Cornell College, Kaplan, and Kirkwood Community College were involved in various OSA archaeological activities over the course of the fiscal year (see Table 8). These included 10 students employed in a work-study capacity, 13 other students employed at OSA on a part-time basis—many while also using OSA resources to complete degree requirements, and two student volunteers who assisted with OSA-sponsored research.

FIELD SERVICES DIVISION

Education and Outreach Program

The Education and Outreach Program (EOP) provides resources and opportunities that encourage an understanding, appreciation, and stewardship of Iowa's archaeological past. A goal of the EOP is to expand partnerships with organizations and agencies across Iowa to better maximize OSA's mission to strengthen heritage education. The EOP's efforts are guided by a series of enduring understandings directly linked to OSA's current strategic plan goals:

1. Everyone has a culture and all cultures have value.
2. Respectful understanding of diverse cultures, past and present, is essential for living in a pluralistic society and world.
3. Understanding the human past is essential for understanding the present and shaping the future.
4. Archaeology is one of multiple ways to learn about the human past.

5. Archaeology advances understanding and appreciation of human diversity over time.
6. The Midwestern-Iowa setting contains a long, rich record of human occupation interrelated and relevant to the wider human experience.
7. Stewardship of archaeological resources is everyone's responsibility.

In FY 2011, external financial support for the EOP totaling \$17,567 (\$10,000 grants, \$1,400 contracts, \$1,565 fees, and \$4,600 contributions) was garnered from public and private organizations. This does not include external support for a number of substantive outreach efforts on behalf of the General Contracts Program and Archives Program and paid by contracts and grants administered through those programs. These included the Iowa Valley Scenic Byway, Glenwood Archaeological Preserve, Albany Mounds, and Sagers projects. External funding supported part-time assistance by OSA staff including Chérie Haury-artz, Eleisha Barnett, Elizabeth Fox, John Hall, Daniel Horgen, Alan Hawkins, Matt Cretzmeyer, Tricia Bender, Robert Flagg, Kevin Verhulst, and Mark Anderson.

The OSA's endeavors directly reached a public audience estimated at over 681,000 people with face-to-face interactions, Internet, television, and radio broadcasts statewide (Appendix B). OSA staff engaged in public outreach at several additional events in Indiana, Illinois, and Portugal. A series of Wikipedia submissions expanded this audience nationally and internationally. Consultations, tours, and job-shadowing opportunities also attracted 1,180 visitors to OSA and the UI.

The EOP content on the OSA website remains a vigorous, interactive conduit between the public and OSA through the efforts of the OSA Systems Administrator and webmaster Mary De La Garza and her assistants. In FY 2011, assistant Tricia Bender resigned and was replaced by Robert Flagg. During this year the OSA web pages received an estimated average 1,754 hits per month (see www.uiowa.edu/~osa).

Social networking sites, particularly Facebook, were an important venue for OSA's program information dissemination in FY 2011. The Facebook site has over 248 active viewers. Additional press releases were also prepared and issued via the UI News Service.



Highlights of the EOP for FY 2011 include:

- Iowa Archaeology Month 2010 *Touring Across Iowa's Past*.
- Draft Iowa Valley Scenic Byway Corridor Management Plan.
- A second Central Plains Tradition Symposium.
- Teacher workshops at the Herbert Hoover Presidential Library, West Branch.
- Albany Mounds Interpretive Center Concept Design.
- Sagers Exhibit Panels and public outreach events.

Iowa Archaeology Month (IAM) continues as OSA's premier outreach endeavor, and has received Humanities Iowa funding support for almost two decades. For a third year, IAM took word of Iowa's archaeological heritage to communities and riders along the route of the Des Moines Register's Annual Great Bike Ride across Iowa (RAGBRAI), July 24–31, 2010.

The OSA utilized RAGBRAI as a vehicle for educating the general public about Iowa archaeology and early Native American history. This year Team Archaeology partnered with natural resources specialists from Iowa's Department of Natural Resources (IDNR) and the U.S. Geological Survey (USGS). Their scholarly expertise offered an understanding of the environment, landscape, and natural resources which form the context and backdrop for Iowa's human history.

At the RAGBRAI Expo kickoff event in Sioux City, at two pass-through communities along the route—Washta and near Dike—and while riding each day, "Team Archaeology" shared information about Iowa's past and distributed thousands of IAM 2010 informational brochure and promotional wristbands, lanyards, and carabiners to thousands of riders and community members. The Iowa Archaeology Month 2010 web pages, which offer substantive information and images about Iowa archaeology, had 1,628 visits between June and September, 2010. In addition, 25 promotional announcements about IAM 2010 were broadcast over Iowa Public Radio.

A very strong web presence and three additional venues including Hooverfest at the Herbert Hoover National Historic Site in West Branch (August 7), the Meskwaki Nation powwow at Tama (August 12–14), and Heritage Day at Wildcat Den State Park near Muscatine (September 17), were incorporated into IAM 2010. In October, 400 elementary school youngsters and their teachers were also introduced to archaeology as part of the annual, two-day "Let's Celebrate Archaeology" event at the State Historical Museum in Des Moines. Participants received some of the promotional materials from IAM 2010.

OSA's multi-year Iowa Valley Scenic Byway project saw the completion of a draft Corridor Management Plan which provides short-term and long-term guidance towards the development, marketing, interpretation and preservation of the Byway area. This



endeavor remains a creative partnership among several OSA programs including the EOP.

More than two dozen invited experts on the Central Plains (archaeological) Tradition from across the Nation gathered at the DeSoto Bend National Wildlife Refuge for a weekend workshop in November 2011 to discuss current and future research. The session was the second such event held in conjunction with OSA's recent Loess Hills Cultural Resources study.

The Herbert Hoover Presidential Library and Museum generously hosted and funded two teacher workshops organized and presented by the EOP. The first introduced 17 educators from eastern Iowa to OSA's latest teaching trunk and curriculum on Fort Atkinson and the mid-19th century Ho-Chunk presence in northeastern Iowa. The second workshop was a Project Archaeology workshop held in June for 33 area educators. Project Archaeology is a national archaeological and heritage education program which has been established in 27 states including Iowa. OSA's EOP and Burials Program directors serve as state facilitators for Project Archaeology.

In the fall of 2010, OSA received a subcontract to assist in the preparation of a concept design for the interpretation of the Albany Mounds historic site in western Illinois. Working with a team of architectural, landscape, and exhibit designers and members of the Sac & Fox Tribe of Kansas, Sac & Fox of the Mississippi in Iowa, and Sac & Fox Tribe of Oklahoma, a document outlining four strategies for the interpretation and potential development of the site area was submitted.

Through a State Historical Society of Iowa Historic Resource and Development Program grant the OSA Archives received funding to preserve the Paul Sagers Archaeological Collection, a large, private collection from eastern Iowa. As part of this project, five new interpretive panels about the collection, eastern Iowa rockshelters, and the Woodland period were created to become featured exhibits in the OSA lobby area. Additional public outreach for the project included a new web page, a presentation and field trip in Jackson County attended by members of the Sagers family, and an Open House at OSA to unveil the new exhibits and acknowledge the Sagers family. The Open House is scheduled for October 2011.

Venues for the dozens of public presentations by OSA staff in FY 2011 (Appendix B) included K-12

schools, Iowa public radio and television (IPTV-ICN), community newspapers, county conservation centers, museums, libraries, county historical organizations, the Belin-Blank Center for Gifted Education and Talent Development, Grant Wood AEA, Herbert Hoover Presidential Library and Museum, the State Historical Museum of Iowa, Iowa Valley RC&D, UI Speakers Bureau, UI Department of Anthropology and Museums Studies Program, UI Museum of Natural History, the Iowa Archeological Society and its chapters, and Spring Mill State Park in Indiana.

The EOP provided consultation and assistance to educational, historical, cultural, and environmental organizations statewide including: the State Historical Society of Iowa, Sac & Fox Tribe of the Mississippi in Iowa, Ioway Tribe of Kansas and Nebraska, Sioux City Public Museum, Loess Hills Prairie Seminar, the Golden Hills RC&D, Wickiup Hill Outdoor Learning Center, Cornell College, and the University of Northern Iowa. OSA staff also provided programming and assistance to numerous organizations throughout the year (see Appendix B). A major public outreach endeavor was the volunteer excavations at the Iowaville Site, directed by GCP's Cindy Peterson, funded in part by a grant from the State Historical Society of Iowa.



Project Archaeology weekend workshop.



Proposed interpretative center concept.

EOP Director Alex continues to assist with the Society for American Archaeology’s State Network whose national lists serve is maintained at OSA. She remains on the Advisory Board for the Mississippi Valley Archaeology Center (MVAC) at the University of Wisconsin-La Crosse with a particular interest in fostering MVAC’s highly successful education program. In FY 2011, she began her tenure on the Iowa State Preserves Advisory Board and the Iowa Museum Association Board. Shirley Schermer, OSA Burials Program Director, and Alex continued to serve on Project Archaeology’s national advisory team. EOP assistant, Chérie Haury-Artz, continues to serve as the coordinator for the statewide Iowa Archeological Society amateur certification program.

RESEARCH DIVISION

Burials Program

The Burials Program works closely with Indian tribes, the OSA Indian Advisory Council (IAC), landowners across the state, and a variety of local, state, and federal agencies. Its purpose is to implement state and federally mandated protection of burial sites and examination and disposition of human remains. The Burials Program is the principal point of contact regarding reburial and repatriation in general and the Native American Graves Protection and Repatriation Act (NAGPRA) in particular. Since 1976, when Iowa’s burial protection law was passed, the program has handled 2,659 projects in all of Iowa’s 99 counties.

The number, type, and timing of new burial projects in any one year can vary greatly. Because of the diverse variables in these projects, each needs to be addressed on a case-by-case basis. The overall goal of

the Burials Program is to be successfully responsive to each of these projects. To meet this goal requires the flexibility to respond as needed to diverse situations. In FY 2011, there were 165 new projects from 67 counties and three unknown locations (Figure 1). In addition, work continued on numerous burial projects from previous years. The majority of projects dealt with potential or real threats to known or possible burial sites. Twenty-eight site investigations were conducted. Indian Advisory Council (IAC) meetings were held in November 2010, March 2011 (on-site), and April 2011, as well as consultation throughout the year via email and phone.

New projects have included the unanticipated discovery of human remains at three sites—Louisa, Plymouth, and Polk counties—necessitating field investigation, consultation, and excavation. Several large projects with burial issues have required review, discussions, and multiple meetings.

One project, the Dubuque Old Third Street Cemetery has consumed a great deal of Burials Program time—field work 2007 and 2008; lab analysis throughout 2009; lab and field work in 2010 and into 2011. Of the over one thousand flag numbers assigned to possible features in the field, close to 900 burials were excavated. Osteological and artifactual analysis of the 2010 and 2011 materials is on-going. The 2007 and 2008 remains and funerary items were transferred to the director for the Mt. Olivet cemetery in Dubuque for reburial. Joe Artz, Glenn Storey, and Caroline Davis conducted geophysical work to help guide the 2011 field investigations.

A court ruling affecting protection of pioneer cemeteries under 523I.316 prompted discussions and recommendations for 2011 legislative changes to clarify



the original intent of this Code section to cover pioneer cemeteries. The possible destruction of mounds and possible possession of human remains prompted discussions with the Iowa Attorney General's Office and preparation of a packet of information sent to a southeast Iowa county Sheriff's Office requesting their investigation of possible violations of Code of Iowa 716.5 and 5231.316.6.

NAGPRA and process for the disposition of culturally unidentified human remains: The final rules for the previously reserved section in the NAGPRA regulations on the disposition of culturally unidentifiable human remains were published in the Federal Register in March 2010, taking effect May 14, 2010. A request was made for an opinion from the National NAGPRA Office whether the NAGPRA process developed by OSA, SHSI, IAC, and 21 signatory tribes is compatible with the new rules, allowing continuation of that process. Their response was forwarded to UI legal counsel and the Iowa Attorney General's Office, along with

OSA's interpretation of the response. Schermer was an invited presenter for a workshop on NAGPRA for the NATHPO conference in Green Bay, Wisconsin. She attended the NAGPRA 20th anniversary symposium in Washington, D.C., also visiting with National NAGPRA Office personnel and colleagues at the Smithsonian. Schermer provided osteological services to Effigy Mounds National Monument (EFMO) identifying and inventorying human remains.

Burial-related Educational Outreach and Partnerships: Schermer developed and taught a three-session course on forensic anthropology in May 2011 for the UI Osher Lifelong Learning Institute. The Burials Program employed four work-study students this year. The UI-Stanford Collection continued to provide UI student educational and research opportunities.

Schermer provided assistance with the Iowa Valley Scenic Byway project, the Albany Mounds Master Plan development project, and the Glenwood Preserve archaeological survey and public outreach proj-

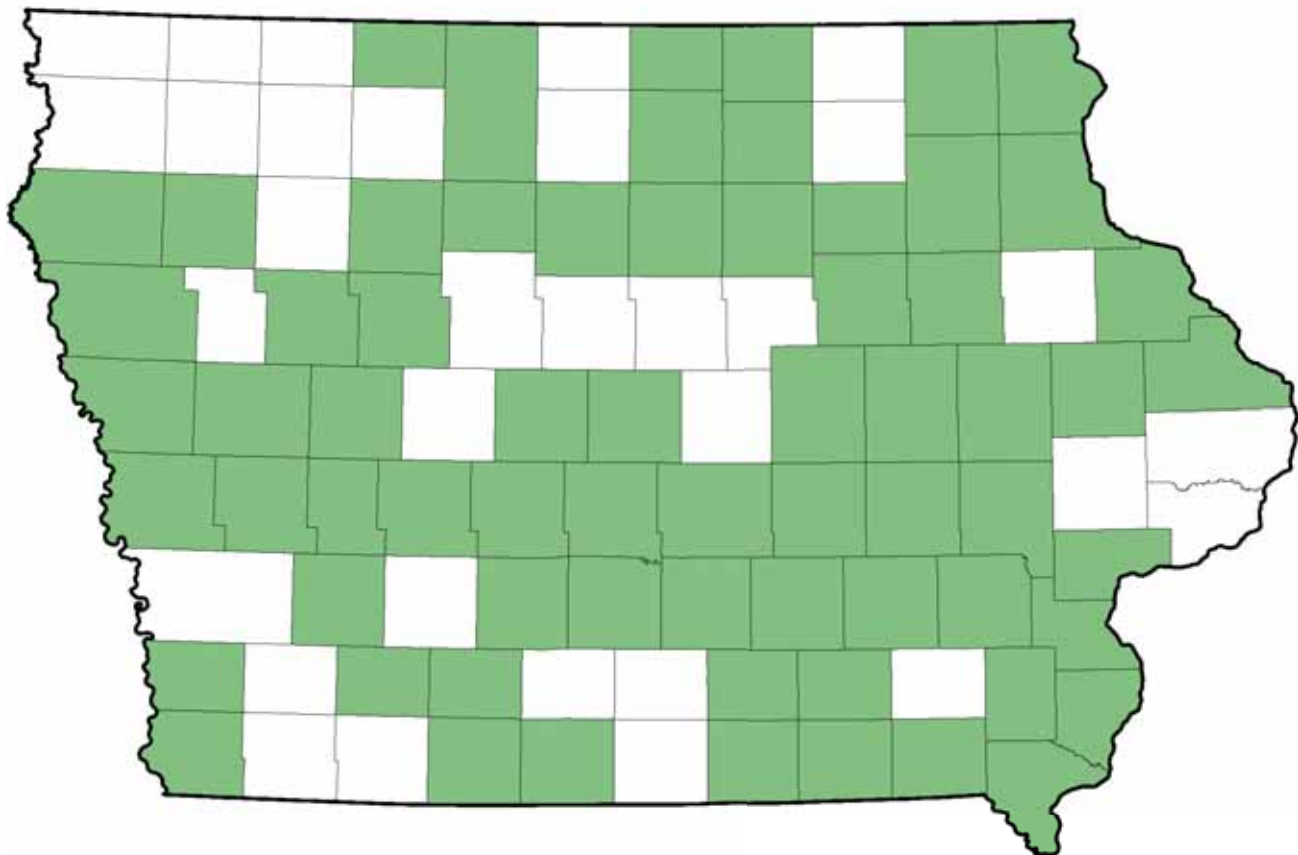


Figure 1. Map showing locations of Burial Program projects in FY 2011.



An 1889 bird's eye view of the Old Third Street Cemetery (OSA Burials Program Archives).

ect. She was involved, along with several OSA staff, in several meeting discussions, exploring a possible NEH grant application focusing on mounds in the Yellow River drainage. Collaborative projects such as these, involving multiple OSA programs, strengthens each of our programs and enables us to better understand, protect, and promote Iowa's cultural resources.

The Burials Program continues to work with the U.S. Army Corps of Engineers, Natural Resources Conservation Service (NRCS), Iowa Department of Natural Resources, Iowa Department of Transportation, Iowa State Historic Preservation Office, Effigy Mounds National Monument, Iowa Natural Heritage Foundation, county conservation boards, developers, the State Association for the Preservation of Iowa Cemeteries, and private landowners on various projects with a potential to impact burial sites, long-range management issues, and preservation options. It also provides information about Iowa's Burials Program and the Iowa NAGPRA process to other states upon request.

CONTRACT SERVICES DIVISION

The Contract Services Division conducts contract and grant-funded research and services. The two programs within the division—the Highway Archaeology Program (HAP) and the General Contracts Program

(GCP)—undertake archaeological and architectural history studies statewide. Contract Services Division projects generate important new knowledge on Midwestern prehistory and history, and they form the basis for many staff publications, professional and public presentations, and student and faculty research projects.

General Contracts Program

In FY 2011, the GCP celebrated its twentieth year of service and research with the capture of 76 awards totaling \$1,541,157. Investigations were conducted in 40 Iowa counties, 2 Illinois counties (Figure 2), as well as with materials from Turkey and Turkmenistan. Following past practice, awards are tallied fully in the fiscal year initially received regardless of the schedule of planned expenditure. As always, considerable volatility in cultural resource management archaeology research consulting opportunities remains typical, although FY 2012 shows promise of high levels of consulting activity by GCP. The program average funding level for the past three fiscal years is \$1,276,613.

FY 2011 saw a great deal of both research and applied service activity in the GCP, with research activities at 65 percent of our funding dollars, dominating. Service-related contracts under the auspices of the



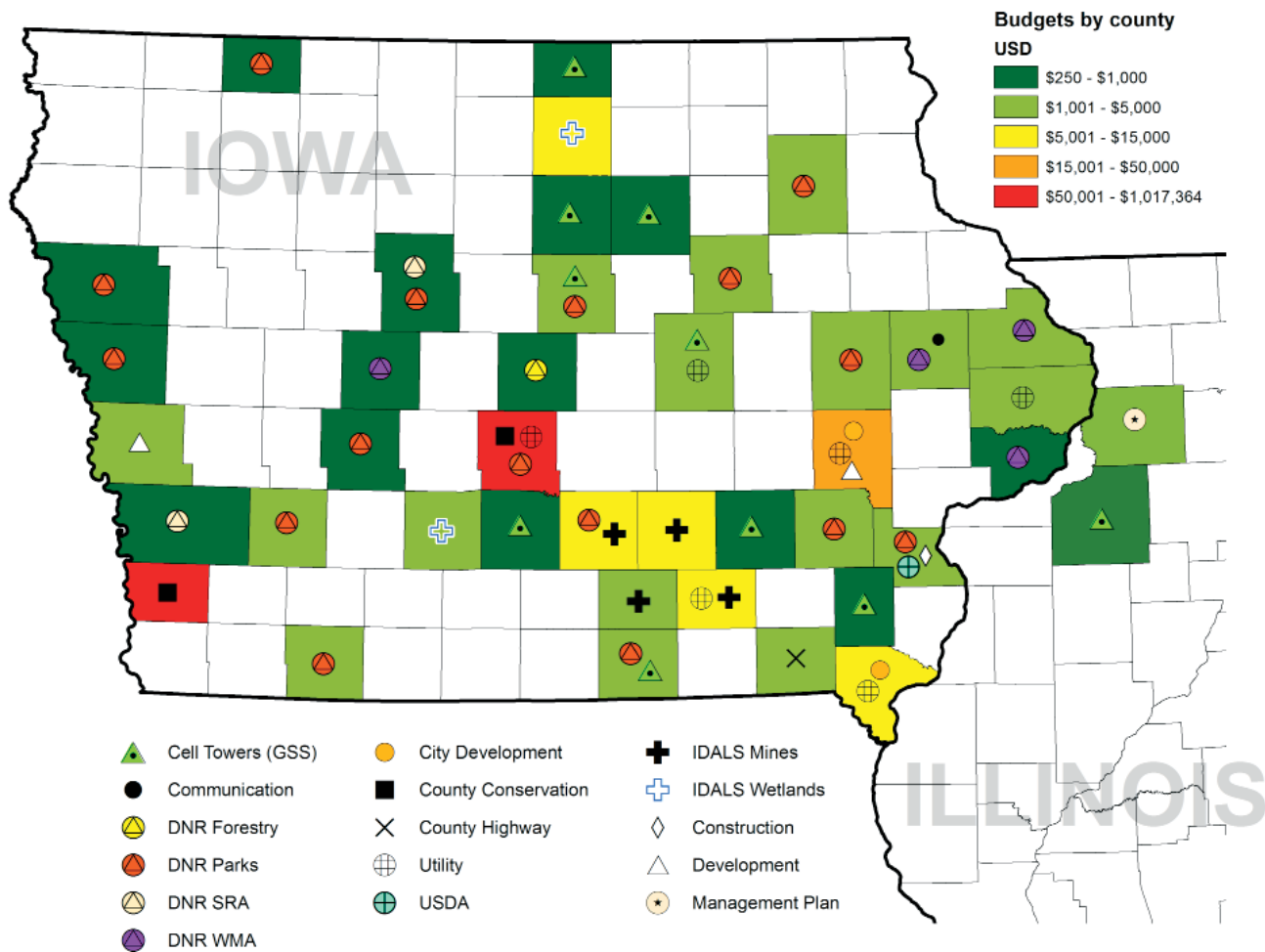


Figure 2. Map showing spatial distribution of GCP project types and budgets by county.

National Historic Preservation Act account for the remaining 35 percent of our external funding. This work involved numerous archaeological surveys in compliance with applicable state and federal legislation for a variety of state, county, federal, and private agencies. In FY 2011, most of the survey work undertaken by GCP was for state agencies involved in numerous projects involving the upgrade or expansion of infrastructure in Iowa’s cities, state parks, and counties (Figure 3).

Much of the research undertaken in FY 2011 has focused on hunter-gatherer studies resulting from two large data recovery projects, one for the Iowa DNR at Lake Darling, the other for the City of Des Moines Wastewater Reclamation Authority. Both projects will contribute important new knowledge regarding hunter-gatherer mobility, settlement, and village life and will form the core of a new OSA re-

search initiative, the Hunter-Gatherer Studies Initiative. Excavations at the Palace Site (13PK966) in Des Moines revealed an exceptionally well-preserved early 5th millennium B.C. settlement. Research activities in FY 2012 will contribute to an understanding of the layout of the community and relations between subsistence strategies, settlement patterns, and daily life along the Des Moines River 7,000 years ago. Preliminary research from the Palace Site excavations will be presented by various project staff at the Iowa Archeological Society Fall Meeting in September and at the Midwest Archeological Conference Annual Meeting in October.

GCP also contributed to research in the OSA’s Lithic Studies Initiative, which was made possible by a 2007 UI OVPR Internal Funding Initiative Grant awarded to Program Director Melody Pope for the purchase of an optical imaging system.

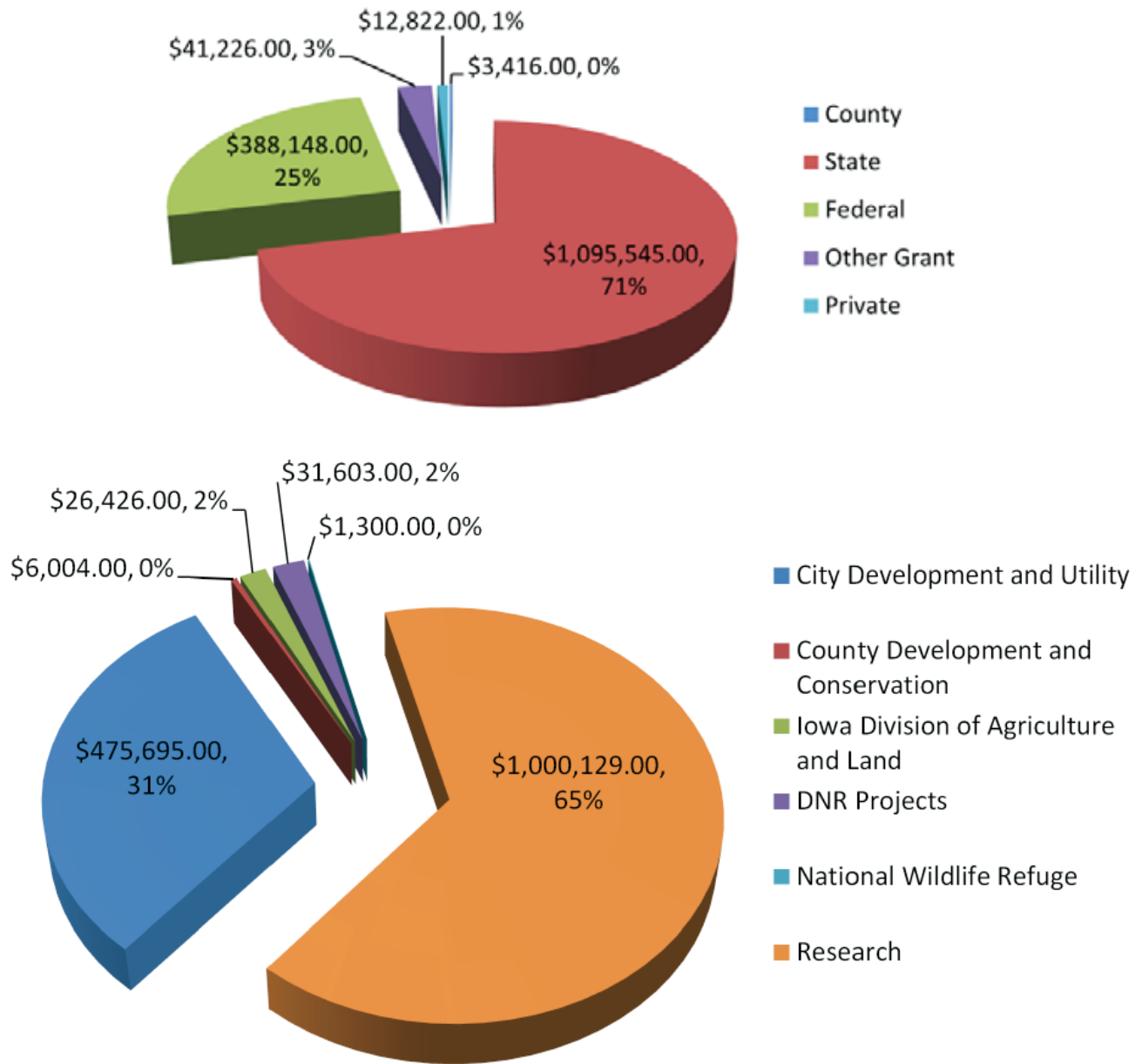


Figure 3. Pie charts showing distributions of UI-external funding in FY 2011 for GCP.

Pope utilized this system to conduct international Mideastern research. She also continued research on plant processing with stone tools in collaboration with researchers investigating the transition to plant cultivation in the ancient Midwest. Through Iowa Center for Research by Undergraduates (ICRU) funding, Pope was able to involve then UI senior Anson Kritsch in the lithic initiative research. Pope and Kritsch's collaborative research was presented in April 2011 at the Central States Anthropological Society 2011 Confer-

ence. Their research will be jointly presented at the 2011 Midwest Archaeological Conference in October and at the Society for American Archaeology Annual Meeting in April 2012.

The Frontier Archaeology Studies Initiative saw effort in the completion of a grant from the Indiana Division of Historic Preservation and Archaeology, "Acquiring History at Spring Mill State Park." This project involved collaborations between researchers at the OSA, Indiana University, and the Indiana DNR





*Photographs from the Palace Site.
Left: excavation in progress.
Right: large ground stone axe.*



*Projectile points recovered
from the Palace site.*



Division of State Parks. A research report and publication, brochures and interpretive signage, a public presentation, and teacher's workshop resulted from this research program.

The OSA Ancient Landscapes and Mounds Study Initiative received support in FY 2011 from the UI OVPR through Social Sciences Funding Program and Arts and Humanities Initiative grants. The research conducted through these two funding initiatives will support a NEH collaborative research grant submission in the fall of FY 2012.

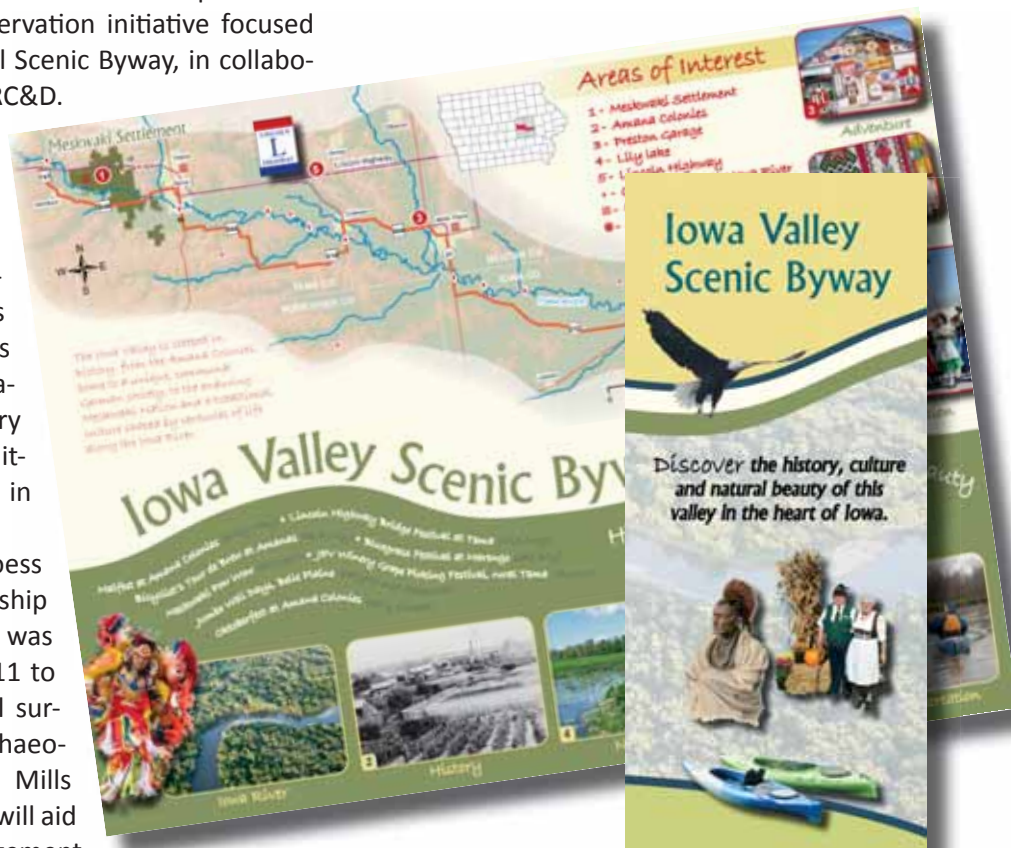
The GCP contributed to numerous "public archaeology" projects in FY 2011 that supported preservation initiatives in collaboration with the National Park Service and two of Iowa's scenic byways, the Loess Hill's National Scenic Byway and the Iowa Valley Scenic Byway. FY 2011 saw the completion of a large collaborative preservation initiative focused on the Loess Hills National Scenic Byway, in collaboration with Golden Hills RC&D.

One important outcome of this project for Iowa is that GCP Project Archaeologist, Cindy Peterson, will be presenting the National Historic Landmarks nomination for the Davis Oriole Earthlodge to the National Park System advisory board's Landmarks Committee in Washington, D.C. in November 2011.

An extension of the Loess Hills study, GCP in partnership with Golden Hills RC&D was awarded a grant in FY 2011 to conduct an archaeological survey of the Glenwood Archaeological State Preserve in Mills County, Iowa. This project will aid in preservation and management of the valuable cultural resources at Iowa's largest archaeological pre-



Cover of the Iowa Valley Scenic Byway Corridor Management Plan, currently in final editing.



New brochure featuring the Iowa Valley Scenic Byway, completed in FY 2011.



serve and will make important contributions to our research initiative, Ancient Landscapes and Mound Studies. The preserve survey project also provided opportunities to involve local students and the interested public in our archaeological fieldwork.

Work continued in FY 2011 on the National Park Service collaborative project involving a National Historic Landmark nomination for the important Kimball Village located in western Iowa. FY 2012 promises to be equally busy on the preservation front, with continuing agreements with the National Park Service and other partners for work at another important western Iowa Native Indian NHL site, Blood Run.

Highway Archaeology Program

The Highway Archaeology Program (HAP) completed its 41st consecutive year of service under annual contracts with the Iowa Department of Transportation (DOT). Calendar year 2010 marked the 22nd year that historic architectural evaluations were prepared for standing buildings scheduled for acquisition or removal, and the 15th year that cultural resource evaluations were provided for transportation planners and engineers seeking cultural resources assistance on proposed highway projects.

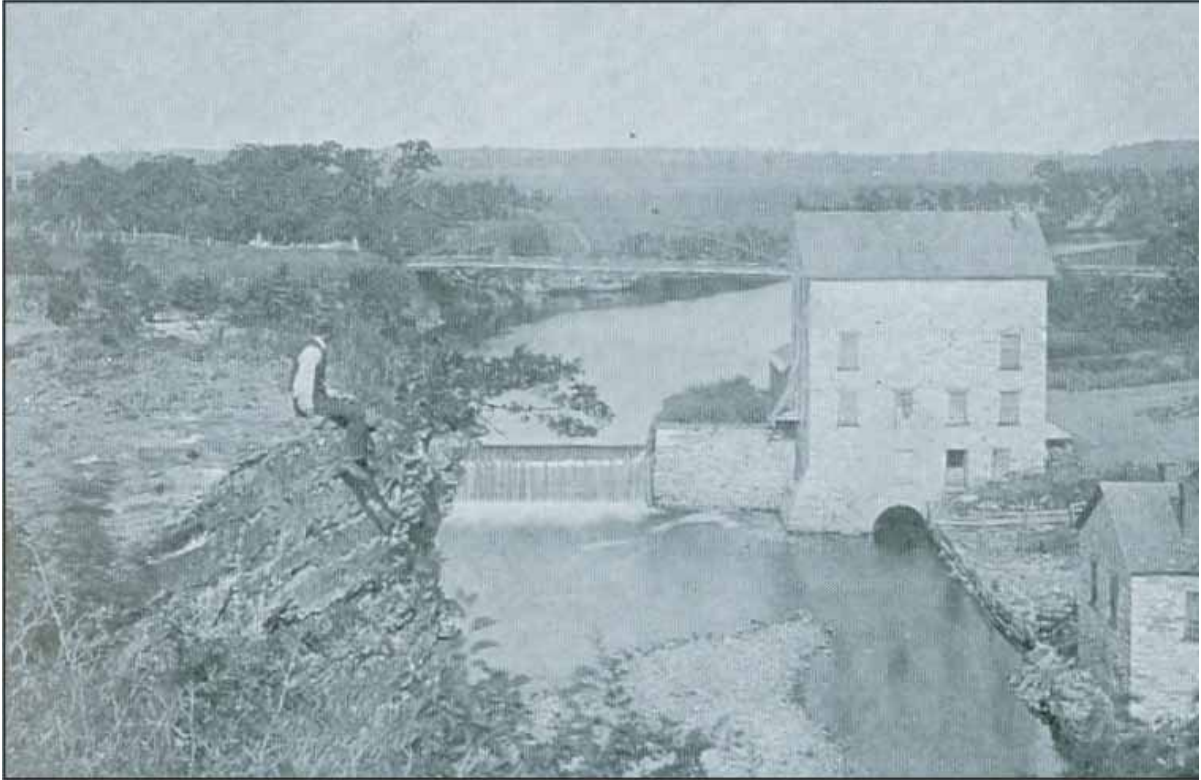
Over the past year, the HAP conducted investigations on 63 projects in 43 counties involving Phase IA (reconnaissance) and Phase I (survey) studies to evaluate project areas and to identify archaeological sites, and to conduct architectural documentation projects on historic sites. Representative projects completed in 2010 included surveys for emergency earth slide and river bank stabilization repairs, highway intersection modifications, bridge and culvert replacements, and wetland mitigation projects.

One unique project involved the investigation of a submerged historic archaeological site in the Iowa River. Proposed dredging activities associated with the U.S. 65 bridge replacement in Iowa Falls in Hardin County were close to the underwater remains of the mid-nineteenth century White's Mill and Dam. The remains of this mill were flooded in the early twentieth century following the construction of a hydroelectric dam. A water drawdown event in the hydroelectric dam pool had exposed the mill site remains, which

were in close proximity to an area that needed to be dredged to facilitate the launching of barges needed for bridge repairs. Maintaining close cooperation with city engineers and hydroelectric company officials, archaeological investigations were scheduled to take place during a second water drawdown. During this second temporary drawdown the scattered mill foundation remains were mapped and tested while exposed on a sand bar. Ultimately, it was determined that the submerged mill site has no archaeological integrity remaining and is not eligible to the National Register of Historic Places.

The study titled *Iowa's Historic Automobile Roads* was completed earlier as part of a Memorandum of Agreement between the Iowa DOT and SHPO stemming from the mitigation of the removal of archaeological site 13MC133, an early automobile road segment. First outlined in last year's annual report, the study presented information on how to identify, survey, and document historic roads in Iowa, and evaluate their significance under the criteria of the National Register of Historic Places. The Iowa's Historic Automobile Roads report is currently available for download from the Iowa DOT's website. For their work, the historic roads study team members Carl Merry, Marlin Ingalls, and Maria Schroeder were honored to be selected as recipients of the 2011 Excellence in Consulting Award presented by the National Council on Public History (NCPH). This prestigious award for "outstanding contributions to the field of public history through consulting or contract work" was presented at the NCPH Annual Meeting.

The procedures developed over the years and used by the University of Iowa Highway Archaeology Program for cultural resource identification and evaluation are in compliance with state and federal regulations and guidelines for fieldwork, reporting, and curation of materials. The goals continue to be to provide the Iowa DOT with comprehensive archaeological and historic architectural coverage on transportation projects, and authoritative cultural resource evaluations for transportation planners, and to use this information to expand the knowledge of Iowa's rich cultural heritage.



Historic views of the Iowa Falls Mill. Stereoscopic 1880s view of the mill (upper) and early twentieth century postcard view of mill (lower). [This was originally Figure 9 in PCR 33(1)].





View of the mill foundation remains at 13HA422 during low water levels. View to the north on November 3, 2009 (upper) and view to the west on November 3, 2009 (lower). [This was originally Figure 7 in PCR 33(1)].

GENERAL SERVICES DIVISION

Curation and Documents Program

By statute the OSA is the State Archaeological Repository for Iowa. The OSA curates collections (artifactual materials and associated documents and photographs) from the OSA Contract Services Division, private archaeological consulting firms, OSA research, and from private donations. OSA curates collections for federal and state agencies including the Rock Island District Corps of Engineers, Kansas City District Corps of Engineers, U.S. Fish and Wildlife Service, Iowa Army Ammunition Plant, General Services Administration, Iowa Department of Natural Resources, and State Historical Society of Iowa. The OSA is the designated repository for the Charles R. Keyes Archaeological Collection for the State Historical Society of Iowa and the Paul Sagers Archaeological Collection for the Iowa Department of Natural Resources.

The OSA pursues grants in support of efforts to ensure the long-term care for the collections. In FY 2011 the Room B9 Repository Improvement grant-funded project was completed. The space was fully remodeled and compact mobile shelving was installed. The Room B9 Repository now houses nearly 4,000 cubic feet of collections. This project was funded by a State Historical Society of Iowa Historic Site Preservation Program grant with matching funds from the UI Office of the Vice President for Research. A State Historical Society of Iowa Historic Resource and Development Program grant has provided funds to digitize OSA photographic materials. Through this funding, digital images of 30,000 slides and photographs have been produced.

In conjunction with the Room B9 improvement project, the documents collection was reorganized during FY 2011. One-of-a-kind documents are now housed in the secure Room 120 Repository. The cat-



Recently installed lower level OSA repository.



aloging system for documents and photographs was revised to better facilitate locating collections, categorizing collections, and reposing new collections.

In FY 2011 through a transfer agreement between the Department of Anthropology at the University of Wisconsin at Madison (UW-Madison) and the OSA, nearly 400 cubic feet of artifactual material from Iowa sites curated at UW-Madison were returned to Iowa for permanent curation. These collections are from excavations conducted in the 1960s and 1970s by the UW-Madison Department of Anthropology. The majority of the collections are from late prehistoric Mill Creek culture sites. These collections are a valuable resource for further research, particularly for faunal and botanical studies.

The OSA maintains in database format (a relational database for artifactual materials and a bibliographic database for documents) information regarding the acquisition of collections. In FY 2011, 187 artifact collections were newly accessioned into the repository; 102 from projects conducted by private consulting firms, 78 from projects conducted by the OSA Contract Services Division, five of the UW-Madison collections, and two private donations. The total number of accessioned collections at the end of FY 2011 was 12,961, reflecting correction of a database calculation error in the FY 2010 report of accessions. The documents bibliographic database contains over 80,000 records. Nearly 50 percent of these records are available digitally. Digitized documents are fully text searchable.

The OSA tracks the use of both on-site collection examinations and collection loans. In FY 2011, 22 separate collections were examined including 11 collections in the Charles R. Keyes Collection. The collections were examined by four OSA staff members and four other researchers. A total of 16 loan agreements were signed representing 29 separate OSA collections and six Charles R. Keyes collections. Collections were loaned for exhibits, educational programs, and research. Collections were loaned to OSA staff and others including the Logan Museum of Anthropology, Beloit College; Sioux City Public Museum; Mississippi Valley Archaeological Center at the University of Wisconsin-La Crosse; Iowa Gold Star Military Museum; and the University of Northern Iowa Museum.

Geospatial Program

The Geospatial Program (GEOP) maintains the Iowa Site File, an inventory of the officially recorded archaeological sites in Iowa. The Iowa Site File consists of a Geographic Information System (GIS), a relational database combining maps and tabulated data.

GEOP also provides geoarchaeological and GIS consulting services and conducts GIS and geoarchaeological research. The program derives funding from (1) University of Iowa general appropriations to the OSA; (2) fees charged for site records searches and on-line site file access; and (3) contract- and grant-supported consulting and research in GIS and geoarchaeology. During FY 2011, the program supported three positions at 100 percent FTE, one full-time hourly employee, and two to three part-time hourly employees.

During FY 2011, GEOP continued to maintain and disseminate information from the Iowa Site File. A total of 244 site numbers were assigned to newly recorded sites located in 67 different counties (Figure 4). Data for 360 sites were added to the site file. Most newly reported sites derive from cultural resource surveys conducted by professional archaeologists. However, some were also reported by landowners, amateur archaeologists, and other non-professionals.

As of 6/30/2011, **26,116** archaeological sites were recorded in the Iowa Site File. Information on each site is recorded in a relational database and locations are stored in a GIS. The OSA makes extensive use of the GIS and database to respond to site information requests from a wide variety of planners and researchers. In FY 2011, the Site Records Manager conducted 217 data searches for consultants, agencies, and individuals (Figure 5). She also printed posters for 12 UI students and faculty members presenting in poster sessions at professional conferences. Searches and posters generated \$21,728 in revenue.

The Site Records Manager continues to utilize the GIS system of site maps to expedite searches of the site file. The accompanying maps show the location of sites added to the Iowa Site File in FY 2011, and the locations of the 217 site searches.

Information from the Iowa Site File is also provided on the World Wide Web. The I-Sites internet map server (www.uiowa.edu/~osa/gisatosa) provides maps of all 99 Iowa counties showing the locations of Public Land Survey sections (ca. 1 x 1 mi) where



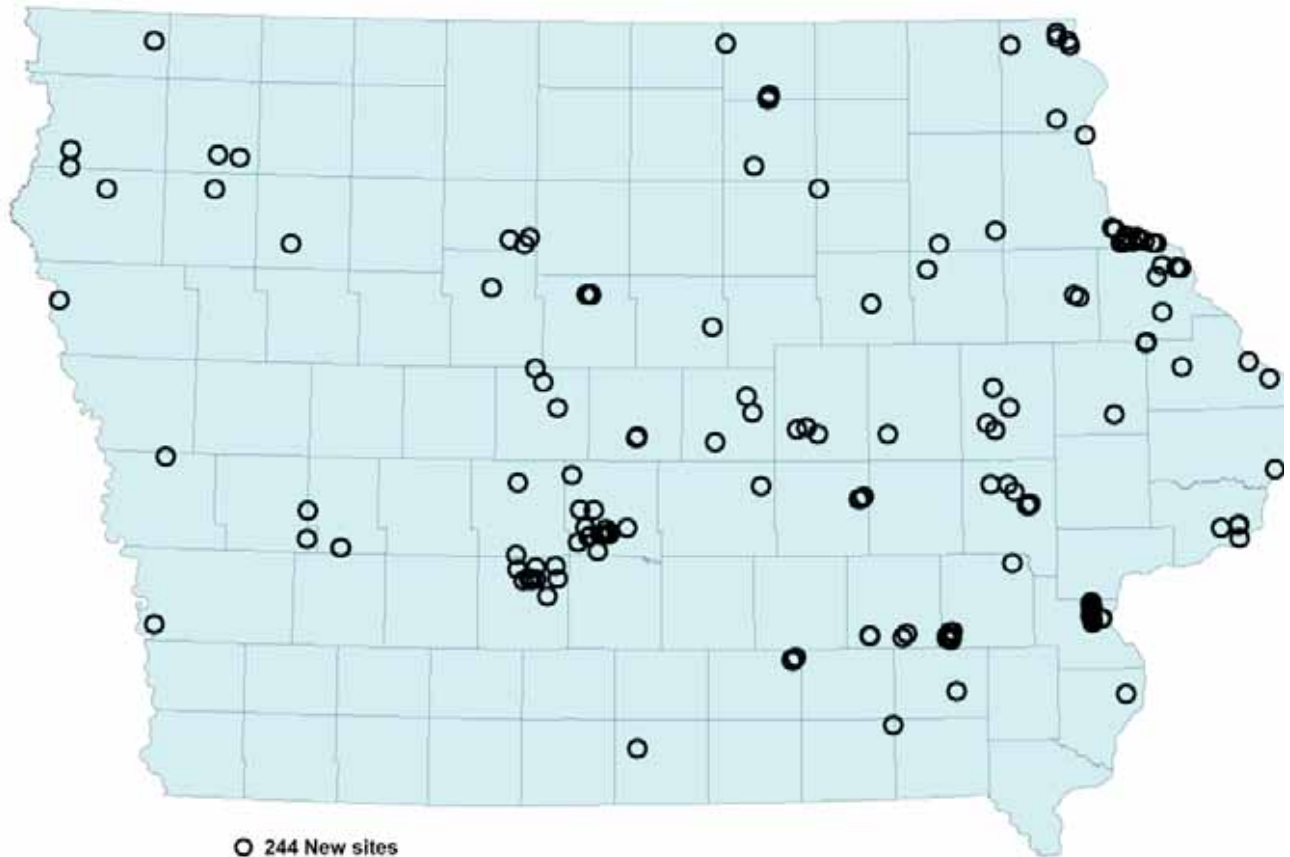


Figure 4. Newly recorded archaeological site locations, FY 2011.

Non-OSA Entities Consulting the Iowa Site File

<i>Client Class</i>	<i>Number of Searches</i>
Academic Research	7
City Government	24
County Conservation	1
CRM Contractors	36
Developers	43
Engineering/Environmental Consultants	53
Federal Agency	27
Nonprofit Environmental	2
Private Citizens	2
Regional Planners, COGs	11
Student Research	10
Tribal Government	1

archaeological sites have been recorded. A password-protected website (iowaisites.com) provides qualified professional archaeologists and their staff with access to more detailed data on archaeological sites. As of the end of FY 2011, 180 individual users are registered to use I-SitesPro, under 27 licenses purchased by individuals, firms, and agencies. Licenses fees generated revenues of \$27,535.

During FY 2011, the Geospatial Program received awards totaling \$107,862 for nine new geoarchaeological and GIS projects. Program staff also received funding from five new awards to other OSA programs.

Highlights of the program’s research year included completion of reports involving geoarchaeological fieldwork or landform mapping for externally-funded projects located in Dunn County, North Dakota; Lincoln County, South Dakota; Noble County, Minnesota; and Dubuque, Sioux, Bremer, Scott, and Johnson counties, Iowa. Progress was made on a grant to write a geoarchaeological overview and develop buried site

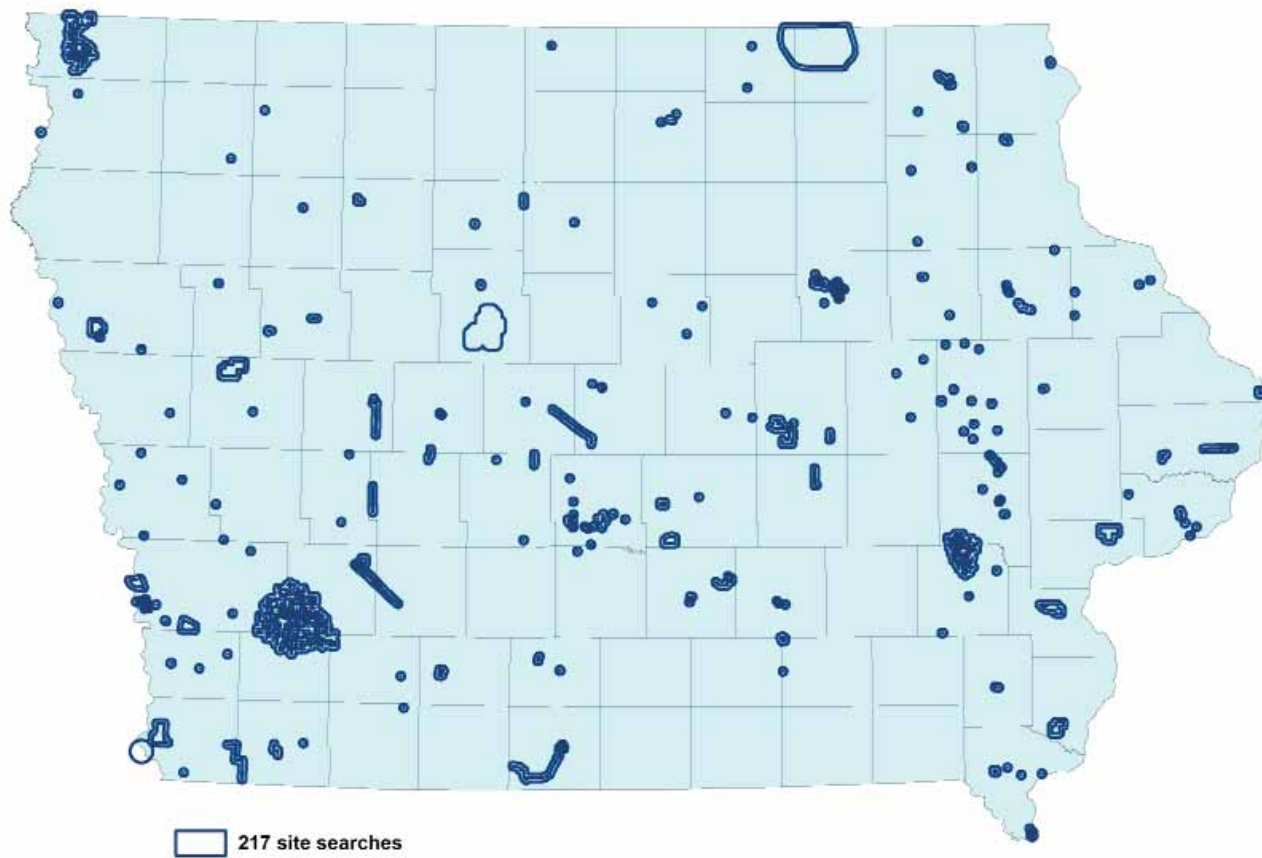


Figure 5. Iowa Site File searches, FY 2011.

testing standards for South Dakota. For UI Facilities Management, GEOP conducted Phase IA studies of archaeological potential for campus areas as part of the University’s flood mitigation and recovery efforts.

A major award from the National Center for Preservation Training and Technology (NCPTT) will allow GEOP to develop a software tool for detecting prehistoric burial mounds in remote sensing data obtained by Light Detection and Ranging (LiDAR). LiDAR uses airborne lasers to create very accurate elevation maps. GEOP’s software tool will process LiDAR data looking for the characteristic geometry of earthen mounds, enabling researchers to rapidly locate features that resemble burial mounds. The technique promises to advance both preservation and research interests.

Another major project, under contract to HDR Engineering, Sioux Falls, South Dakota, was to create an archaeological predictive model for a proposed electrical transmission corridor called the Rock Island

Clean Line. The planning corridor included much of the northern one-third of Iowa. GEOP provided HDR with models from its Landscape Model for Archaeological Site Suitability (LANDMASS). The models, along with explanatory text, will be used by project planners in selecting among alternate routes for the transmission lines.

A third project was a combination geoaerchaeological and geophysical study of the Old Third Street Cemetery site, a mid-19th century cemetery in Dubuque County that has been the focus of OSA Burials Program excavations for a number of years. GEOP director Artz collaborated with Glenn Storey, (Departments of Classics and Anthropology, UI) and Carolyn Davis (Iowa Geological and Water Survey) to examine as yet unexcavated portions of the site vicinity to determine the potential for undiscovered graves to be present.

Information Technology Program

The ITP works closely with OSA staff members, UI's Information Technology Systems, and various vendors to maintain the OSA's computer network and its many components. The ITP handles repairs and upgrades for all OSA information technology equipment and is responsible for the general health of the OSA information technology system—performing regular and emergency threat detection, repair, and removal. Since its inception, the ITP has been the lead advisor and is instrumental in all aspects of planning and implementing the OSA network system including a regular reassessment of all OSA hardware and software.

Software and hardware training for the OSA staff also falls within the responsibilities of the ITP. The OSA staff is provided with assistance for all software applications which include ESRI ArcGIS 10, GPS data processing software, Microsoft Office 2010, Adobe InDesign CS5, and CorelDRAW Graphics Suite.

The ITP is the only OSA source for web development and maintenance. It manages and maintains the OSA website which contains hundreds of pages of data. ITP also hosts a number of out-of-office web clients including the National Association of State Archaeologists, and the Iowa Archeological Society pages.

The ITP also reviews the UI's IT Policy Survey and IT Parallel System Audit, participates in the activities of the UI's Spam Reduction Team and the Security Review Team, and assists with the Campus Information Technology Leaders Strategic Security Plan.

During FY 2011, the ITP undertook a number of major software upgrades. Since the ITP inception in 2001, several large-scale conversions have been completed. These conversions include the following:

- The OSA's social media presence was substantially improved. The Iowa Archaeologist Facebook page has over 248 active viewers looking for Team Archaeology and general Iowa archaeology updates.
- Two wireless hubs along with 10 wireless HP notebooks were added to the extensive Windows 7 64-bit system. The OSA continued to replace its aging fleet of monitors with the acquisition of 5 new flat panel LCDs (24-inch Samsung Syncmaster 2443bwx).

- Website improvements are ongoing. In FY 2011 250 new pages were added, many focusing on the Sager collection panel efforts. Many press items were added throughout the year as streaming video.
- The ITP shot footage on several projects this year. The most notable being the Palace Site, 13PK966, footage. The ITP engaged in still and video work for the Iowa Valley Scenic Byway project and Team Archaeology RAGBRAI outreach efforts as well.
- The ITP welcomed two student interns from the University of Iowa (Rob Flagg) and Kirkwood College (Andrew Halper).

PUBLICATION DIVISION

The OSA continues publication of four scientific series on Iowa archaeology—Contract Completion Reports, Project Completion Reports, Reports, and Research Papers—as well as occasional Special Publications, pamphlets, calendars of events, and posters. During FY 2011, the OSA produced 72 Contract Completions Reports and 17 Project Completion Reports; these scientific publications are listed in Appendix F. Several Research Papers are in progress.

Staff members continued their steady contribution of materials to the Newsletter of the Iowa Archeological Society, although OSA staff member Bill Whittaker completed his editorship of this publication. Still, OSA continues its support for editing, production, and printing of the Newsletter as well as the annual Journal of the Iowa Archeological Society. The full-color issues of the Newsletter are printed by UI Printing Service's digital press. Electronic publishing via the World Wide Web continued to grow with the addition of 250 new web pages. The OSA website continues to expand on the wide variety of information related to Iowa archaeology and related subjects relevant to both scholars and the general public.

INTERNATIONAL ENDEAVORS

GEOP continued to work with Drs. Russ Ciochon (Department of Anthropology), Art Bettis (Department of Geoscience) and Frank Huffman (Department of Geology, University of Texas) on GIS data from Ngandong, a Homo erectus site in Indonesia.



GEOP continued participation in ongoing UI Department of Anthropology studies of the late Neolithic mortuary site of Bolores, Portugal, directed by Dr. Katina Lillios. Lillios and program director Artz spent July, 2010, excavating at the site with a crew of students from the Universities of Iowa and Michigan. Lillios, Artz, and two of her graduate students presented their research at Bolores in a day long symposium hosted by the Leonel Trindade Association, Natural History Society in Torres Vedras, Portugal.

Artz mentored UI Anthropology undergraduate Megan Thies through an Iowa Center for Research by Undergraduates (ICRU) fellowship for Academic Year 2011. For her fellowship project, Thies did extensive work with the Bolores site GIS. Thies and Artz presented posters of their Bolores research at the Society for American Archaeology meetings in Spring 2011.

Shirley Schermer and Artz continued their international involvement with Kosovo related to student exchanges and assistance with attempts to establish a Department of Archaeology and Physical Anthropology at the University of Prishtina. Schermer co-authored a chapter, with Edi Shukriu, University of Prishtina, which was published in late March 2011 in *The Routledge Handbook of Archaeological Human Remains and Legislation: An International Guide to Laws and Practice in the Excavation and Treatment of Archaeological Human Remains*.

GCP Director Melody Pope conducted pilot research on lithic use wear in collaboration with colleagues studying Neolithic life in Turkey, Iran, and Turkmenistan. One project was in support of dissertation research completed in 2011 by Maria Starzmann at the University of Binghamton, whose research in collaboration with Pope, will be presented at the American School of Oriental Research 2011 Annual Meeting. FY 2012 will see a continuation of collaborative research based on a multi-year research project at the Neolithic-Chalcolithic site Monjukli Depe in southern Turkmenistan.

STAFF LEADERSHIP SERVICE AND AWARDS

In addition to their active participation as members of boards, commissions, or committees (Appendix E), several OSA staff members received awards and served leadership roles in public and professional service during FY 2011.

Lynn Alex served as the Iowa Co-coordinator for Project Archaeology, a national public education program. She continued serving as Iowa Coordinator for the national Society for American Archaeology Public Education Committee. She is the Education Committee Co-chair for the Iowa Museum Association Board.

Joe Artz served as the Chairperson of the Iowa Statemap Advisory Committee.

Richard Carlson was appointed by the State Historic Preservation Office as Architectural Historian to the State of Iowa National Register Nominations Review Committee.

John Doershuk continued service to the UI Research Council, serving as chair of the Authorship Policy Subcommittee. He was reappointed for the 2010–2011 academic year as Adjunct Assistant Professor in the Department of Anthropology.

Alan Hawkins served as Membership Secretary and Treasurer for the Iowa Archeological Society.

Dan Horgen served as Secretary-Treasurer of the Association of Iowa Archaeologists.

Stephen Lensink was reappointed for the 2010–2011 academic year as Adjunct Assistant Professor in the Department of Anthropology.

Carl Merry was appointed by the State Historic Preservation Office as Professional Archaeologist to the State of Iowa National Register Nominations Review Committee. Merry, along with HAP colleagues Marlin Ingalls and Maria Schroeder, received the 2011 Excellence in Consulting Award presented by the National Council on Public History.

Michael Perry served as Editor of the *Journal of the Iowa Archeological Society* (2005–2008 and 2008–2011 terms).

Melody Pope was reappointed for the 2010–2011 academic year as Adjunct Assistant Professor in the Department of Anthropology.

Shirley Schermer continues to serve as Adjunct Instructor with the Department of Anthropology, and served as the Iowa Co-coordinator for Project Ar-

chaeology, a national public education program. She served as the State Network Coordinator for the national Society for American Archaeology Public Education Committee.

William Whittaker served as editor of the Newsletter of the Iowa Archeological Society.

The study titled *Iowa's Historic Automobile Roads* was completed earlier as part of a Memorandum of Agreement between the Iowa DOT and SHPO stemming from the mitigation of the removal of archaeological site 13MC133, an early automobile road segment. First outlined in last year's annual report, the study presented information on how to identi-

fy, survey, and document historic roads in Iowa, and evaluate their significance under the criteria of the National Register of Historic Places. The Iowa's Historic Automobile Roads report is currently available for download from the Iowa DOT's website. For their work, the historic roads study team members Carl Merry, Marlin Ingalls, and Maria Schroeder were honored to be selected as recipients of the 2011 Excellence in Consulting Award presented by the National Council on Public History (NCPH). This prestigious award for "outstanding contributions to the field of public history through consulting or contract work" was presented at the NCPH Annual Meeting.



Carl Merry, Maria Schroeder, and Marlin Ingalls holding 2011 Excellence in Consulting Award plaques.



Review of Fiscal Year 2011 Annual Work Plan Accomplishments

The FY 2011 Annual Work Plan for the OSA set 16 specific objectives, all partially or completely accomplished, to be achieved during the fiscal year. These objectives address particular goals as set forth in OSA's five-year strategic plan for 2006–2011:

1. Undertake REAP/HRDP-funded field investigations at the lowaville site including involvement of interested UI students, loway tribal members, and Iowa Archeological Society members.
2. Utilize OSA resources to offer undergraduate and graduate students research and employment opportunities including as volunteers, work-study students, research assistants, and interns, and explore whether OSA can feasibly provide partial funding and mentoring for a graduate student in Anthropology working on a Master's degree specialization in CRM archaeology.
3. Provide archaeological and osteological services for the identification and excavation of unmarked burials at a nineteenth century historic cemetery in Dubuque; continue providing high quality osteological services to law enforcement personnel as needed.
4. Pursue funding that builds on existing OSA strengths using LiDAR and GIS for complex spatial analyses, including the NEH Collaborative Research Program for high precision mound-mapping.
5. Resubmit the SAFETEA-LU Transportation Enhancement Grant Program application "Ar-
chaeological Research Culminating in the Publication of a Scientific Report on Iowa-DOT-excavated Sites of the Glenwood Culture and Associated Educational Outreach Components."
6. Develop Iowa Archaeology Month 2011 plans to continue significant statewide impact and contribute to the recognition of UI and OSA's leading roles in preserving and investigating Iowa's past.
7. Work in partnership with UI Information Technology to improve the non-spatial database web portion of I-Sites in order to: improve web and server-side security; enhance clients' experience through improved interfaces and query capabilities; and upgrade web and database components to comply with current technology.
8. Encourage OSA staff participation in mentoring Iowa undergraduate students in ICRU-funded research and increase OSA's visibility to undergraduate students as a resource for mentored research opportunities.
9. Generate sufficient student enrollment for OSA's fall 2011 First-year Seminar by participating in the UI Summer Orientation programming and getting OSA "on the map" provided to new students.
10. Support UI Department of Anthropology efforts to establish a new local archaeology field school initiative.



11. Continue enhancement of the OSA website and Facebook presence by featuring 1) products associated with the Sagers HRDP grant effort; 2) information on the Archaeological Conservancy's recent purchase of the Woodfield Earthlodges site; 3) developing and posting informative "what about?" archaeology video shorts; and 4) uploading/linking OSA Archives photos to the Iowa Digital Library.
12. Continue current OSA involvement with the Bolores, Portugal project in collaboration with the UI Department of Anthropology and pursue new initiatives in international cooperative research.
13. Complete renovation of the OSA B9 Repository portion of the 700 CLSB basement and associated Archives and Room 120 reorganization to create the most efficient and up-to-date curation facility possible including enhanced digital access; provide OSA staff with training on new layout and access procedures.
14. Submit for publication at least 10 journal articles and book chapters, including to peer-reviewed journals, and contribute to online websites and Wikis to improve the dissemination of information about Iowa's past thereby increasing OSA's visibility as a contributor to establishing UI as a top 20 public research institution.
15. Assist the Whiterock Conservancy with the development of archaeological education programming.
16. Complete planning for a Summer 2011 Wickiup Hills joint OSA/Iowa Archeological Society field project.

SUMMARY

The OSA continued its wide-ranging research, education, and service programs during FY 2011 with broad-based involvement by the OSA staff. Especially notable were the following accomplishments:

- Organizing and hosting a workshop on current Central Plains Tradition archaeological research issues as an extension of OSA's recent Loess Hills Cultural Resources grant and contract-funded project.
- IAM 2010: Iowa Archaeology on the Road that took word of Iowa's archaeological heritage to communities and riders along the route of RAGBRAI, July 24–31, 2011 as well as to the annual Meskwaki Powwow in Tama, Hooverfest in West Branch, and the Heritage Day at Wildcat Den State Park near Muscatine, as well as presentations at individual communities around the state.
- Initiating a search for a new, full-time, OSA staff position, Collections Management Assistant, to replace the retiring Julie Hoyer, long-time OSA Documents Curator.
- Successfully executing fieldwork for two complex data recovery projects, Lake Darling and City of Des Moines Wastewater Reclamation Authority (Palace Site). Both projects will contribute to a new OSA research initiative, the Hunter-Gather Studies Program. The Palace Site excavation was a particularly challenging logistical problem to overcome due to the winter weather conditions under which it was initiated and the discovery of ancient human remains.
- Receipt of a national excellence in consulting award by the project team for study titled Iowa's Historic Automobile Roads.
- Successful completion of construction, moving, and initial reorganization activities for the OSA's Repository space.



Fiscal Year 2012: Plans and Prospects

In FY 2012 the OSA will continue energetically pursuing research, outreach, and service activities throughout Iowa, the surrounding region, and internationally. In the process, the OSA will continue implementation of its current five-year strategic plan (see Appendix A).

The OSA for FY 2012 has established 15 specific objectives which reflect the goals identified in OSA's Strategic Plan: 2010–2016. These objectives are designed to focus OSA staff energy toward contributing to UI's efforts to be a leading public research university while cost-efficiently maximizing the development, dissemination, and preservation of knowledge of Iowa's human past. The 15 specific objectives are:

1. Participate in the On Iowa! orientation program for incoming students and offer a fall 2011 First-year Seminar honors section entitled "Archaeology" which engages participating students in current research at the OSA and Macbride Hall (Anthropology and Museum of Natural History) archaeological laboratories.
2. Sponsor a community-wide open house at the OSA celebrating the new Sagers Collection Exhibit and the OSA's remodeled repository facilities.
3. Utilize OSA resources to offer undergraduate and graduate students research and employment opportunities including as volunteers, work-study students, research assistants, and interns, and mentor graduate students in An-

thropology working on a Master's degree specialization in CRM archaeology.

4. Complete archaeological and osteological services for the identification, excavation, and analyses of unmarked burials from a nineteenth century historic cemetery in Dubuque while continuing to provide high quality statewide osteological services to law enforcement personnel as needed.
5. Utilize funding secured from the NPS National Center for Preservation Technology and Training as well as internal UI grant programs (AHI and SSFP) to build on existing OSA strengths using LiDAR, GIS, and high accuracy field mapping technologies to prepare a fall 2012 NEH Collaborative Research Program grant submission that extends OSA's program of research on ancient landscapes and burial mounds.
6. Initiate the first year of the funded SAFETEA-LU Transportation Enhancement Grant Program award "Bringing the Glenwood Culture to Iowans: Research, Publication, and Engagement on Archaeological Sites Excavated by The Iowa Department of Transportation" including OSA web development on the Portal to Iowa's Past.
7. Develop Iowa Archaeology Month 2012 plans to continue significant statewide impact and contribute to the recognition of UI and OSA as leaders in preserving and investigating Iowa's past.



8. Modernize I-SitesPro in order to improve web and server-side security; enhance clients' experience through improved interfaces and query capabilities; and upgrade web and database components to comply with current technology.
9. Encourage OSA staff participation in continuing recent successes in mentoring Iowa undergraduate students in ICRU-funded research and increase OSA's visibility to undergraduate students as a resource for mentored research opportunities.
10. Pursue CLG-funded field research investigations at the Amanas-area Patterson Trading Post site (13IW261), including involvement of interested UI students, Meskwaki and other tribal members, and Iowa Archeological Society members.
11. Undertake comprehensive archaeological survey of Iowa's largest archaeological state preserve (Glenwood) as an example of community-engaged research including involvement of area high school student interns.
12. Continue current OSA involvement with the Bolores, Portugal project in collaboration with the UI Department of Anthropology and continue initiatives in international cooperative research including lithic microwear (Turkmenistan) and osteological (Kosovo) projects.
13. Initiate collaboration with UI Press regarding possible book projects featuring Iowa archaeology including development of an outline for a volume on the Palace Site (13PK966) extending OSA's research program on hunter-gather studies; and an archaeological guide to discoveries across Iowa.
14. Submit for publication at least 10 journal articles and book chapters, including to peer-reviewed journals, and continue contributions to online websites and Wikis to improve the dissemination of information about the significance and value of Iowa's past.
15. Organize the 2nd Upper Midwest Lithics Conference, to be held at the University of Iowa hosted by OSA and involving the Pentacrest Museums, to extend OSA's program on lithic studies.



Budget for Fiscal Year 2011

The OSA budget for FY 2011 totaled **\$4,447,546**. Of this total, \$526,065 (11.8 percent) consisted of UI General Education Fund (GEF) appropriations for salaries, benefits, general operating expenses, and safety equipment (Figures 6 and 7, Tables 1 and 2). The majority of OSA funding for FY 2011 (**88.2 percent**) was derived from sponsored projects, fees, contributions, gifts, and UI Research Incentive and other non-GEF support (Tables 1, 3–5). The HAP contract with the Iowa DOT accounted for the greatest single source of non-GEF support, amounting to 53.6 percent of all non-GEF money and 43.1 percent of total OSA funding for FY 2011. The HAP annual contract runs on a calendar year rather than fiscal year; this report continues previous years' practice of assigning the calendar year funding total to the fiscal year in which the contract began. New funding for sponsored research other than the HAP contract totaled \$1,660,421 for FY 2011. The number of full- and part-time employees for all programs during FY 2011 totaled 98 (Table 7, Figure 8).

Figure 6 and Table 1 show OSA annual budget totals from FY 1987 through FY 2011. Funding from UI appropriations has increased steadily, if unevenly, through most of this period. The majority of the growth in GEF funding reflects annual raises to UI staff as authorized by the Board of Regents as there has been relatively little change through the years at OSA in the number of GEF-supported positions. Downward fluctuations reflect, for example, temporary periods of transition between directors resulting in fewer salary and fringe benefit dollars being allo-

cated to the office while the position went unfilled. Significant changes include the loss of OSA's Editor as a GEF-supported position in the early 1990s and recently reduced GEF support for the OSA Osteologist to 35 percent and Director positions of the Education & Outreach and Geospatial programs, both reduced to 50 percent GEF.

National economic turmoil resulted in a response by state government to reduce UI GEF support for FY 2010, a cut which was temporarily buffered by a one-year-only allocation of American Recovery and Restoration Act funding. The full impact of this cut was reflected in the decreased GEF support experienced by OSA in FY 2011.

As Table 1 and Figure 6 document, funding received by OSA from external (non-GEF) sources has greatly increased over the past two decades. In 1987 for each \$1 of GEF support received, the OSA typically generated \$2 of non-GEF support. For the period FY 1992 through FY 2011, OSA achieved a greater than five-fold return on GEF investment, with several years exceeding an eight-fold return, as was the case for FY 2011.

Figure 7 further illustrates the positive financial impact of OSA's presence at UI. Since 1996, OSA has generated and returned to UI \$6,507,549. These funds are required "Facilities and Administrative" (F&A) costs collected as part of externally-funded projects undertaken by OSA in its role as a UI research department. This amount equals 88.94 percent of the total UI GEF support received by OSA since 1996. Average net cost per year measured as GEF allocation

offset by F&A costs generated by OSA and recouped by UI for the 16-year period is just \$50,597.

FY 2011 marked the sixth year (and third in the last five) when OSA-generated F&A returns to UI exceeded the unit's GEF allocation. OSA's projected funding from external grant and contract sources appears

stable for FY 2012. Several large-scale grant-and contract-funded projects are underway which will yield significant new research data on Iowa archaeology and the opportunity for substantial public outreach, both in keeping with OSA's primary mission.

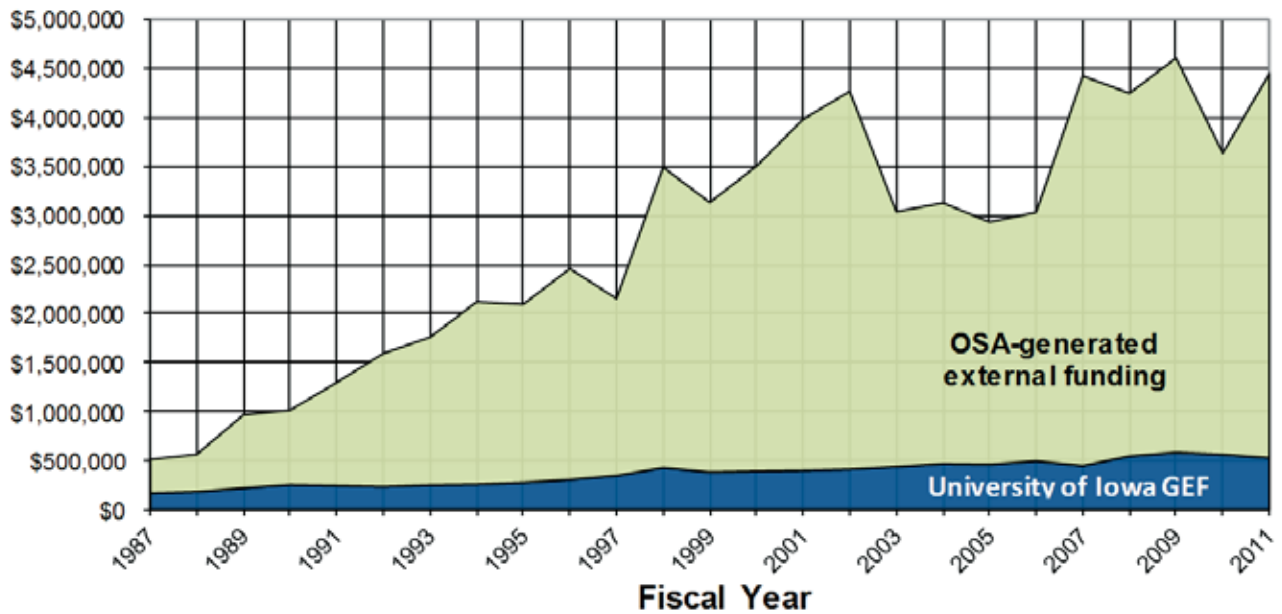


Figure 6. Office of the State Archaeologist funding levels, Fiscal Years 1987–2011.

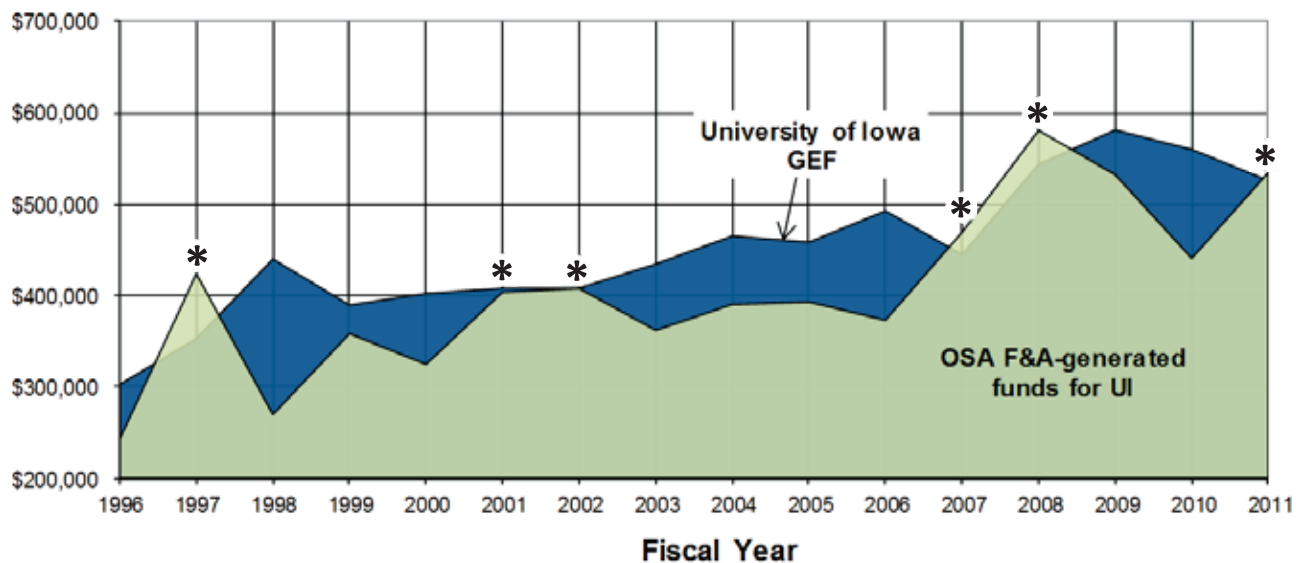


Figure 7. Comparison of UI General Education funding (GEF) allocation with Facilities and Administrative (F&A) costs generated for UI through OSA grant and contract activity, Fiscal Years 1996–2011. Stars indicate where yearly OSA return to UI matched or exceeded the unit's GEF allocation.

Table 1. Office of the State Archaeologist Budgets, Fiscal Years 1987–2011

<i>Fiscal Year</i>	<i>University of Iowa GEF Support¹</i>	<i>Research Incentive Funds²</i>	<i>Gifts and Return on Endowments³</i>	<i>Fees & Contributions⁴</i>	<i>Grants & Contracts⁵</i>	<i>Total</i>	<i>% Non-GEF Support</i>
1987	\$166,378	—	—	—	\$343,814	\$510,192	67.4
1988	\$180,450	—	—	—	\$381,611	\$562,061	67.9
1989	\$218,321	—	—	—	\$746,440	\$964,761	77.4
1990	\$250,721	—	—	\$3,392	\$758,115	\$1,012,228	75.2
1991	\$241,892	—	—	\$20,666	\$1,032,124	\$1,294,682	81.3
1992	\$231,763	—	—	\$4,828	\$1,355,345	\$1,591,936	85.4
1993	\$248,162	—	—	\$3,925	\$1,503,660	\$1,755,747	85.9
1994	\$255,391	—	—	\$995	\$1,860,710	\$2,117,096	87.9
1995	\$273,846	—	—	\$3,442	\$1,815,692	\$2,092,980	86.9
1996	\$302,603	—	—	\$9,599	\$2,143,301	\$2,455,503	87.7
1997	\$352,857	\$9,227	—	\$4,874	\$1,792,913	\$2,150,644	83.6
1998	\$440,045	\$16,108	—	\$5,750	\$3,044,573	\$3,490,368	87.4
1999	\$389,553	\$10,249	—	\$16,551	\$2,726,245	\$3,132,349	87.6
2000	\$402,362	\$13,614	—	\$14,288	\$3,085,581	\$3,502,231	88.5
2001	\$408,071	\$12,336	—	\$41,569	\$3,531,186	\$3,980,826	89.7
2002	\$423,448	\$15,346	—	\$50,414	\$3,791,216	\$4,265,078	90.1
2003	\$450,152	\$15,495	\$100	\$35,966	\$2,551,074	\$3,037,292	85.2
2004	\$479,047	\$13,756	\$370	\$58,244	\$2,589,257	\$3,126,918	84.7
2005	\$473,335	\$14,834	\$60	\$101,250	\$2,357,860	\$2,932,505	83.9
2006	\$507,801	\$14,933	\$60	\$51,872	\$2,474,091	\$3,031,824	83.2
2007	\$459,007	\$14,176	\$6,200	\$81,653	\$3,876,329	\$4,423,189	89.5
2008	\$561,546	\$17,838	\$10,006	\$203,489	\$3,471,418	\$4,246,459	86.5
2009	\$581,252	\$23,276	\$2,520	\$376,553	\$3,622,303	\$4,605,904	87.4
2010	\$560,044	\$22,115	\$2,756	\$195,048	\$2,854,434	\$3,634,397	84.6
2011	\$526,065	\$16,751	\$6,624	\$320,615	\$3,577,491	\$4,447,546	88.2

¹ Safety equipment contributions by the UI are included for FY 2007 and subsequent fiscal years as they became a direct departmental allocation.

² Research Incentive funds first became available in FY 1997.

³ Amounts for gifts are not available for FY 1987 through FY 2002. Gifts include return on the UI Foundation’s endowment funds for the Office of the State Archaeologist (Table 3).

⁴ Amounts for fees and contributions are not available for Fiscal Year 1987 through FY 1989. Totals for FY 1990 through FY 2000 and FY 2002 do not include GIS and Site Records fees, and totals for FY 1990 through FY 1999 do not include Burials Program fees.

⁵ Grants and contracts generated the following Facilities and Administration returns for the University of Iowa: FY 2011, \$534,829; FY 2010, \$440,829; FY 2009, \$532,334; FY 2008, \$580,886; FY 2007, \$469,414; FY 2006, \$373,047; FY 2005, \$392,968; FY 2004, \$390,363; FY 2003, \$361,995; FY 2002, \$407,757; FY 2001, \$403,836; FY 2000, \$324,627; FY 1999, \$358,258; FY 1998, \$269,706; FY 1997, \$423,888; FY 1996, \$242,812.

Table 2. University of Iowa General Education Fund Support for OSA Operations, Fiscal Year 2011

Salaries	\$371,493
Fringe Benefits	\$133,737
General Expenses	\$14,791
Safety Equipment	\$1,552
General Expenses, Burials Program	<u>\$4,492</u>
Total	\$526,065

Table 3. Gifts and Return on Endowments, Fiscal Year 2011

UI Foundation-Staff Excellence Fund	\$3,068
Midwest Archaeological Fund	<u>\$3,556</u>
Total	\$6,624

Table 4. Funding Received from Fees and Contributions, Fiscal Year 2011

Burials Program	\$180,795
Curation Services Program*	\$82,161
Education and Outreach Program	\$6,165
Geospatial Program	\$51,075
Publications Program	<u>\$419</u>
Total	\$320,615

* Includes return on the endowment fund held by the UI for the Office of the State Archaeologist.



Table 5. Funding Received for Sponsored Research and Services, Fiscal Year 2011

<i>Project By Program</i>	<i>County</i>	<i>Award</i>
Education and Outreach Program		
Irishfest	Des Moines	\$100
OLLI Department, Extended Learning Class	Johnson	\$220
State Historical Society of Iowa (Let's Celebrate)	statewide	\$1,082
Humanities Iowa Grant: Iowa Archaeology Month 2011: Touring Across Iowa's Past	Statewide	\$10,000
Subtotal		\$11,402
General Contracts Program		
DNR: SPringbrook SP Shelter Evaluation—No Survey Recommended	Guthrie	\$250
DNR: Lake Macbride Circle Point Restroom	Johnson	\$250
DNR: Elk Rock State Park Pit Latrine	Marion	\$250
DNR: Lake Darling Pit Latrine Near Camping Cabins	Washington	\$250
DNR: Big Creek Solar Light Pole	Polk	\$250
DNR: Honey Creek Wind Turbine	Appanoose	\$250
DNR: Brushy Creek Solar Light Pole	Webster	\$250
DNR: Lewis and Clark Wind Turbine	Monona	\$250
DNR: Lake Odessa House Removal	Louisa	\$250
DNR: Wilson Island SRA Shower Bldg & Utilities	Pottawattamie	\$250
DNR: Wilson Island SRA Ditch Relocation	Pottawattamie	\$250
DNR: Brushy Creek SRA Pit Latrine	Webster	\$250
DNR: Dewitt House Demolition	Scott	\$250
DNR: Dunbar Slough WMA Barn Demolition	Greene	\$250
DNR: Gull Point SP Sanitary Sewer Lines and Dump Station (Revised 1/13/11)	Dickinson	\$899
Microwear Research Pollock and Bernbeck Monjukli	Turkmenistan	\$900
DNR: Stone State Park Picnic Shelter Phase I	Woodbury	\$931
DNR: State Forestry Nursery Fence Replacement Phase Ia	Story	\$994
GSS: US Cellular Lacona, V10386	Warren	\$1,000
GSS: Iwireless Genesco, Henry Co., Illinois	Henry (IL)	\$1,000
GSS: US Cellular Eldon, V10401	Wapello	\$1,000
GSS: FY 11 USC Mystic Cell Tower Phase I	Appanoose	\$1,000
GSS: Rockwell Coop Dows, V10403	Franklin	\$1,000
GSS: USC Northwood Dt 434375 (V10400)	Worth	\$1,000
GSS: Cedar Wapsie Comm. S Shell Rock (V10420)	Butler	\$1,000
GSS: Kalona Coop Telephone Co. Wayland (V10407)	Henry County	\$1,000
GSS: USC Eldora	Hardin	\$1,000
GSS: USC Tama East 760831 (V10319)	Tama	\$1,000
GSS: 190-ft SST North of Richland, Keokuk Co., Modern Communications #095-0012	Keokuk	\$1,000
Polk County Conservation Jester Park Bison Elk Exhibit Phase I	Polk	\$1,028
USDA FSA 2 Cattle Hoop Bldgs Phase I	Louisa	\$1,078
GSS: US Cellular Agency, V10396	Wapello	\$1,200
GSS: USC Ottumwa	Wapello	\$1,300



Table 5, Continued. Funding Received for Sponsored Research and Services, Fiscal Year 2011

<i>Project By Program</i>	<i>County</i>	<i>Award</i>
Temple Hill E911 Jones County	Jones	\$1,300
Port Louisa Pole Barn Phase I	Louisa County	\$1,300
City of Iowa City Animal Shelter Phase Ia	Johnson	\$1,324
DNR: Lake Darling Restroom	Washington	\$1,343
DNR: Green Island WMA Storage Building	Jackson	\$1,428
Microwear Research Starzmann Fistikli Hoyuk	Turkey	\$1,500
DNR: Pine Lake SP Tile Line Phase I	Hardin	\$1,727
DNR: Palisades Kepler SP Culvert Project Phase I	Linn	\$1,768
IDALS: Harris AML Site IA-092	Monroe	\$1,834
DNR: Lake of Three Fires Trail Modification	Taylor	\$1,895
Madison County Wetland Part of FY10P054 Phase I	Madison	\$2,388
IDALS: Shafer AML Site	Wapello	\$2,405
DNR: Big Creek-Neal Smith Trail Reroute	Polk	\$2,439
DNR: Muskrat Slough WMA Dike Construction	Jones	\$2,544
DNR: Lake Anita Utilities Burial	Cass	\$2,874
Iowa River Water Main Crossings, City of Iowa City Phase Ia	Johnson	\$2,959
Fiber Utilities Group: Department of Commerce Fiber to Home Meskwaki Settlement	Tama	\$3,029
Tallgrass/V&K Ottumwa Phase 3 Sewer Supplement Phase Ia	Wapello	\$3,500
Clinton Asac Renovation and Thermal Well Field, Dept. of Energy, Phase I	Clinton	\$3,875
VB County Highway Department, 3 Bridge Replacements	Van Buren	\$3,898
HUD Ft. Madison 9060 WCIAAAA Phase I	Lee	\$3,942
Armadillo Arts Albany Mounds Project	Illinois	\$4,000
HUD: 10 Apartment Units in Logan, Phase I	Harrison	\$4,267
DNR: George Wyth State Park Soft Trails Phase Ia	Black Hawk	\$4,416
DNR: Volga River Campground Renovations	Fayette	\$4,845
Iowa River Water Main Crossings, City of Iowa City Phase I	Johnson	\$5,579
Iowa City Animal Shelter Phase I Intensive Survey - Related to FY11P026 (Phase Ia)	Johnson	\$5,702
IDALS: Crep Wetlands Cerro Gordo	Cerro Gordo	\$6,262
IDALS: Lane and Oldham Mine Areas Assessment	Marion	\$6,643
IDALS Mines Shinn and Groenendyk	Mahaska, Marion	\$6,894
V&K Victory Park Sewers Phase I (Connected to FY10P044)	Lee	\$7,734
UI Music and Art Building Replacements, Phase I	Johnson	\$9,481
UI Arts and Humanities Initiative Grant for Mound Conference	Multiple	\$10,000
Pelds Engineering Moss Green Urban Development FY10P084 Supplement	Johnson	\$12,822
UI SSFP Mound Survey Study	Multiple	\$24,826
Kirkham Michael and City of Des Moines Elm and Water Storm Sewer Investigation	Polk	\$25,000
WRA Combined Sewer Solids Separation Facility	Polk	\$89,871
Veenstra & Kimm Court Avenue & Water Street Sewer Separation/Court Avenue Pump Station	Polk	\$91,720
WRA New Main Outfall Phase 17, Segment 1C	Polk	\$91,731



Table 5, Continued. Funding Received for Sponsored Research and Services, Fiscal Year 2011

Project By Program	County	Award
Data Recovery Plan for Site 13PK966, WRA CSSSF (Cost for Trenching Phase Only)	Polk	\$98,359
Golden Hills RC&D_LHNSBC RFQ Glenwood Resource Center Preserve Archaeological Survey: Related to FY10P019	Mills	\$341,937
WRA Combined Sewer Solids Separation Facility Data Recovery Plan 13Pk966: Shovel Skimming and Block Scraping	Polk	\$616,966
Subtotal		\$1,541,157

Geospatial Program

Supplemental to Geoarchaeological Subcontract, Bee Branch Sewer Reconstruction, Dubuque, Iowa	Dubuque	\$4,000
Phase Ia Geomorphology and Archeological of Credit Island, Davenport, Iowa.	Scott	\$6,501
Phase I, Geoarchaeology of Cedar River Parkway, Waverly, Iowa.	Bremer	\$6,700
Phase Ia Geoarchaeology along Dubuque Street, Iowa City, Iowa.	Johnson	\$7,000
Whiterock Conservancy: Geology of the Whiterock Conservancy	Guthrie	\$8,139
HDR Engineering: Archaeological Modeling for The Proposed Rock Island Clean Line	Rock Island	\$14,005
Phase IA-2 Geomorphological Assessment of Lewis and Clark Water System, Sioux City, Iowa	Plymouth	\$17,518
Phase I Geoarchaeology along Dubuque Street, Iowa City, Iowa.	Johnson	\$21,999
LiDAR Surveyor: A Tool for Automated Archaeological Feature Extraction From Light Ranging and Detection (LiDAR) Imaging Data	Statewide	\$22,000
Subtotal		\$107,862

Highway Archaeology Program

Iowa DOT: Highway Archaeology Program Annual Contract, 2011	Statewide	\$1,917,070
---	-----------	-------------

Grand Total **\$3,577,491**

Note: DOT = Department of Transportation; GPS = Global Positioning System; USC = US Cellular; FSA = Farm Service Agency; GSS = Groundwater Service and Supply, Inc.; DNR = Iowa Department of Natural Resources; WRA = Wastewater Reclamation Authority; NPS = National Park Services; HUD = Housing and Urban Development; IDALS = Iowa Department of Agriculture and Land Stewardship; WMA = Wildlife Management Area; SRA = State Recreation Area; SSFP = Social Science Funding Program; USDA = U.S. Department of Agriculture; CSSSF = Combined Sewer Solids Separation Facility; ASAC = Area Substance Abuse Council; AML = Abandoned Mine Land; CREP = Conservation Reserve Enhancement Program.

Table 6. Permanent Staff Members, Fiscal Year 2010

<i>Name</i>	<i>Title</i>	<i>Division</i>	<i>Funding</i>	<i>%FTE</i>
Lynn Alex	Education and Outreach Program Director	General Services	University/external	62.5
Mark Anderson	Project Archaeologist	Contract Services	external	100
Joe Artz	Geospatial Program Director	General Services	University/external	100
Richard Carlson	Architectural Historian	Contract Services	external	100
Angela Collins	Project Archaeologist	Contract Services	external	100
James Collins	Project Archaeologist	Contract Services	external	100
John Cordell	Repository Manager	General Services	University/external	100
Mary De La Garza	Systems Administrator	Contract Services	external	100
John Doershuk	Director, State Archaeologist	General Services	University	100
Colleen Eck	Site Records Manager	General Services	University/external	100
Alan Hawkins	Project Archaeologist	Contract Services	external	100
John Hedden	Project Archaeologist	Contract Services	external	100
Daniel Horgen	Assistant Project Archaeologist	Contract Service	external	100
Julianne Hoyer	Documents Curator	General Services	University/external	60
Marlin Ingalls	Architectural Historian	Contract Services	external	100
Linda Langenberg	Professional Departmental Assistant	General Services	University	100
Stephen Lensink	Associate Director	General Services	University	100
Robin Lillie	Skeletal Biologist	Research	University/external	100
Carl Merry	Highway Archaeology Program Director	Contract Services	external	100
Blane Nansel	Project Archaeologist	Contract Services	external	100
Amy Pegump	Research Administrator	General Services	University/external	100
Michael Perry	Project Archaeologist	Contract Services	external	100
Cynthia Peterson	Project Archaeologist	Contract Services	external	100
Melody Pope	General Contracts Program Director	Contract Services	external	100
Eloise Ramirez	Project Archaeologist	Contract Services	external	100
Melanie Riley	GIS Specialist	Contract Services	external	100
Shirley Schermer	Burials Program Director	Research	University	100
Maria Schroeder	Assistant Architectural Historian	Contract Services	external	100
W. Lane Shields	Project Archaeologist	Contract Services	external	100
William Whittaker	Project Archaeologist	Contract Services	external	100



Table 7. Complete Roster of Employees, Fiscal Year 2011

Lynn Alex	Montell Edgar	Anson Kritsch	Kat Rocheford
Mark Anderson	Adam Epstein	Heidi Lack	Brian Ross
Joe Artz	Robert Flagg	Linda Langenberg	Bernard Rovetto
Jeffrey Bacon	Elijah Fleming	Stephen Lensink	Teresa Rucker
Eleisha Barnett	Alex Foster	Robin Lillie	Shirley Schermer
David Bartlett	Elizabeth Fox	James Lindsay	Kayla Schmalte
Tricia Bender	James Freshwater	Jennifer Mack	Sarah Schreyer
Jennifer Brandt	Houston Fry	Elizabeth Macken	Maria Schroeder
Ross Byers	Nicole Geske	Carl Merry	Clayton Schuneman
Richard Carlson	John Hall	Elizabeth Miller	W.Lane Shields
Tarey Carter	Andrew Halper	Ashley Moore	Andrew Sorensen
Carrie Christman	Abigail Harrah	Sara Moore	Patrick Stanton
Christopher Chroninger	Chérie Haury-Artz	Mary Mortensen	Mark Stokesberry
Brooklyn Colbert	Alan Hawkins	Blane Nansel	Jennifer Sweet
Angela Collins	John Hedden	Adam Newman	Maria Tavaszi
James Collins	Heather Henderson	Elizabeth Niec	Meagan Thies
John Cordell	Daniel Horgen	Amy Pegump	Sonja Thompson
Matt Cretzmeyer	Katherine Hove	Michael Perry	Anton Till
Joseph DeAngelis	Julianne Hoyer	Cynthia Peterson	Larry VanGordon
Mary De La Garza	Marlin Ingalls	Melody Pope	Kevin Verhulst
Reed Dilley	Bryan Kendall	Eloise Ramirez	David Wheeler
John Doershuk	Kurtis Kettler	Kayla Resnick	William Whittaker
Timothy Dutcher	Caitlin Keusch	Christy Rickers	Samuel Yeates
Christopher Eck	Jordan Kluver	Melanie Riley	Tahira Zaheen
Colleen Eck	Anna Kopecky		



Table 8. Students Participating in OSA Activities, Fiscal Year 2011

<i>Name</i>	<i>Affiliation</i>	<i>Major</i>	<i>Year</i>	<i>Program</i>
Student employees:				
Jennifer Brandt	Kirkwood	Environmental Sciences	Second	Archives
Ross Byers	U of I	English	Senior	Archives
Brooklyn Colbert	U of I	Anthropology	Junior	Burials
Adam Epstein	U of I	Anthropology	Sophomore	Archives
Andrew Halper	U of I	Engineering	Senior	IT
Heather Henderson	U of I	English	Junior	Archives
Elizabeth Macken	U of I	Anthropology/Business	Senior	Burials
Ashley Moore	U of I	Anthropology	Senior	Burials
Teresa Rucker	Kirkwood	Office Assistant	Second	Archives
Tahirn Zaheen	U of I	Health Science/PreMed	Senior	Archives
Student employees (completing degree requirements using OSA resources):				
Eleisha Barnett	Kaplan	Library Science	Grad Student	Archives
Elijah Fleming	U of I	Anthropology/Classics	Sophomore	GCP
Bryan Kendall	U of I	Anthropology	Grad Student	GCP
Anson Kritsch	U of I	Anthropology	Senior/ICRU	GCP
Kate Rocheford	U of I	Geoscience	Grad Student	GEOP
Mark Stokesberry	U of I	Anthropology	Senior	Lab
Meagan Thies	U of I	Anthropology	Senior/ICRU	GEOP
Alexander Woods	U of I	Anthropology	Grad Student	HAP
Student employees (other):				
Robert Flagg	Kirkwood	Finance	Freshman	IT
Elizabeth Fox	U of I	Elem Ed	Senior	Archives
Katherine Hove	U of I	Chemistry	Sophomore	Burials
Mark Stokesberry	U of I	Anthropology	Junior	Lab
David Wheeler	U of I	MFA Acting	Grad Student	GEOP
Student volunteers:				
Paige Brevick	Cornell	Archaeology	Junior	Lab
Rebecca Carter	Cornell	Archaeology	Junior	Lab

Appendices

A

Appendix A: Office of the State Archaeologist Strategic Plan 2010–2016

John F. Doershuk
Director and State Archaeologist

VISION

The Office of the State Archaeologist aspires to be a nationally recognized archaeological research center emphasizing interdisciplinary excellence.

CORE VALUES

In addition to supporting the core values stated in *Renewing The Iowa Promise: “Great Opportunities—Bold Expectations” The Strategic Plan for The University of Iowa 2010–2016*, the Office of the State Archaeologist is guided by the Society for American Archaeology’s *Principles of Archeological Ethics*. These principles are embodied in seven commitments: *stewardship, outreach, publication, preservation, training, accountability, and professionalism*. As a nationally recognized research center, the Office of the State Archaeologist promotes a dynamic intellectual environment, energetic student and public engagement, and advanced research. We actively contribute to the University’s mission and goals. Intellectual and cultural vitality is the foundation of a healthy research organization, and the Office of the State Archaeologist is dedicated to engaging multiple constituencies. Our mission fosters a diverse and vibrant learning environment, enhancing research, teaching, and public service.

MISSION

The mission of the Office of the State Archaeologist is to develop, disseminate, and preserve knowledge of Iowa’s human past through archaeological research, scientific discovery, public stewardship, service, and education.



GOAL 1:

Create a learning experience about the human past that enriches the lives of undergraduates and helps them to become well-informed individuals, life-long learners, engaged citizens, and productive employees and employers.

(Strategic Priority: Undergraduate student success)

- Increase the visibility and awareness of educational opportunities offered by the Office of the State Archaeologist (OSA) among the University student population.
- Attract a student population to the University and OSA through outreach and mentoring programs for high school students.
- Enhance affordability and promote effective year-round learning opportunities by offering student internships, work-study positions, and summer work opportunities.
- Provide undergraduates with high-quality learning experiences through independent study opportunities at introductory and specialized levels leading to honors theses.
- Provide field schools and laboratory research projects that incorporate interdisciplinary studies and/or international collaborations.

GOAL 2:

Promote graduate and professional student participation in OSA research through cooperation with University graduate and professional programs.

(Strategic Priority: Graduate and professional student success)

- Explore and develop major interdisciplinary research topics related to archaeology domestically and internationally.
- Participate in cross-disciplinary graduate degree programs with other University departments and programs.
- Recruit graduate students from University departments and programs to work on OSA projects.
- Provide research opportunities for graduate students through access to OSA's extensive document and material collections.
- Conduct long-term archaeological projects with funded research opportunities for graduate and post-graduate scholars.

GOAL 3:

Strengthen and expand OSA partnerships with public constituencies to advance understanding and appreciation about the human past and stewardship of archaeological resources and showcase the societal benefits of archaeological research and teaching for the citizens of Iowa.

(Strategic Priority: Better futures for Iowans; Strategic initiative: Public outreach and civic engagement)

- Expand partnerships with K–12 educators to promote diversity learning in Iowa history.
- Enhance lifelong learning opportunities and professional development on campus and via distance learning through partnerships between the OSA and other University departments.
- Sponsor public field schools in conjunction with OSA research or projects conducted by other partners.
- Promote OSA's public engagement programs and educational opportunities through television, radio, Internet, and print media.
- Produce and distribute self-guided tour brochures and regional guidebooks to publicly-accessible sites and facilities.
- Engage external partners to enhance archaeological stewardship and foster economic development and heritage tourism.
- Organize occasional conferences on archaeological and native studies topics, invite public and tribal participation, and prepare conference proceedings for peer-reviewed publication.



GOAL 4:

Recognize and illuminate the human diversity inherent in the past as manifested in the archaeological record and use that record for greater inclusion and participation of professionals and the public.

(Strategic Priorities: Knowledge and practice, Student success; Strategic Initiatives: Internationalization and diversity, Public outreach and civic engagement)

- Encourage new and highlight existing research that illustrates the diverse peoples in Iowa's archaeological record.
- Continue OSA's national leadership role in the respectful treatment of ancient human remains.
- Encourage the Regents' institutions and state-wide college communities to use OSA resources in faculty and student research.
- Contribute to developing a network of university-based partners supporting cultural heritage research endeavors, especially with the American Indian and Native Studies Program and Museum Studies Program.
- Involve interested American Indians in Iowa archaeological investigations.
- Fulfill statutory obligations in maintaining the Burials Program, the State Archaeological Repository, and the State Archaeological Site File on behalf of the public interest.

GOAL 5:

Strengthen the OSA's intellectual and cultural vitality within the University, Iowa, and nationally.

(Strategic Priority: Knowledge and practice, Better futures for Iowans; Strategic Initiatives: Efficiency and effectiveness, Scholarly inquiry and creative work, Internationalization and diversity)

- Attract and retain exceptional staff through competitive compensation and professional development support.
- Maintain and enhance gender and ethnic diversity opportunities.
- Provide an environment where innovation, flexibility, and collaboration are encouraged and rewarded.
- Market the OSA's excellence through peer-reviewed publications, large research projects, high-quality cultural resource management, and excellent customer service.
- Direct resources to existing and emerging programs based on their centrality to the OSA's mission and potential for sustained excellence.
- Secure new resources and financial support through philanthropic venues and enhance support for staff in securing internal and external grant funding.
- Maintain and extend stewardship of OSA collections through continued participation within the University of Iowa Collections Coalition initiative, especially as it vitally intersects with campus-wide disaster response procedures.



Appendix B: Public Audio-Visual Presentations, Fiscal Year 2011

Staff Member	Sponsor	Location / Distribution	Date	Topic	Attendance, No. of copies
Alex, Lynn	St. Pius X Elementary	Cedar Rapids	Sept. 7, 2010	Woodland Moundbuilders	75
Alex, Lynn	Cottage Grove Manor	Cedar Rapids	Nov. 3, 2010	Iowa Archaeology	25
Alex, Lynn	The University of Iowa	Iowa City	Mar. 9, 2011	Museum Studies Class: Descendant Communities	20
Alex, Lynn	Office of State Archaeologist	Iowa City	Mar. 11, 2011	Brown Bag: Scottish Island Archaeology	25
Alex, Lynn	State Historical Society of Iowa	Des Moines	Mar. 17, 2011	Irishfest: Viking & Medieval Dublin	25
Alex, Lynn	UI Speakers Bureau	Marengo	Mar. 21, 2011	Mildred Mott Wedel	15
Alex, Lynn	Linn County Conservation Board	Cedar Rapids	Mar. 24, 2011	Master Conservationalist Class: Conservation of Archaeological Resources	20
Alex, Lynn	University of Iowa/Office of State Archaeologist CRM class	Iowa City	May 2, 2011	Career in Education and Outreach	14
Alex, Lynn, and Joe Artz	Iowa Valley Resource Conservation & Development	Marengo	Sept. 25, 2010	Natural Resources & Recreational Features of the Iowa Valley Scenic Byway	17
Alex, Lynn, Chérie Haury Artz, and Eleisha Barnett	State Historical Society of Iowa	Des Moines	Oct. 5–6, 2010	Let's Celebrate Archaeology	400
Alex, Lynn, Chérie Haury Artz, and Eleisha Barnett	Herbert Hoover Library	West Branch	Nov. 1, 2010	Teacher workshop: Ft. Atkinson, the Westward Movement and Resources for Native Americans in Iowa	17
Alex, Lynn, and Chérie Haury-Artz	Office of State Archaeologist	Iowa City	Sept. 3, 2010	Office of State Archaeologist Open House and display for Iowa City Flea Market Auction	50
Alex, Lynn, and Melody Pope	Spring Mill State Park	Mitchell, Indiana	Mar. 5, 2011	Teacher workshop	19
Alex, Lynn, Chérie Haury-Artz, Colleen Eck, and John Cordell	Office of State Archaeologist	Iowa City	Mar. 25, 2011	Job shadower	1
Alex, Lynn, Chérie Haury-Artz, and Lane Shields	Office of State Archaeologist and Herbert Hoover Presidential Library and Museum	West Branch	June 22–24, 2011	Project Archaeology Workshop	33



Public Audio-Visual Presentations, Fiscal Year 2011, Continued

Staff Member	Sponsor	Location / Distribution	Date	Topic	Attendance, No. of copies
Anderson, Mark	Iowa Archaeology Month - RAGBRAI	Dike	July 29, 2010	Flintknapping and Atrial demonstration	700
Anderson, Mark, and Chérie Haury-Artz	Heritage Day at Pine Creek Grist Mill	Muscatine	Sept. 18, 2010	Archaeology Outreach Booth – Native American Toys and Games and Flint Knapping Demonstration	50
Anderson, Mark	Cedar Valley Gem and Mineral Society	Cedar Rapids	Feb. 15, 2011	Current Lithic Research at the Office of State Archaeologist	35
Anderson, Mark	UI-Office of State Archaeologist Archaeological Field School	Iowa City	May 16, 2011	Flintknapping demonstration and discussion	25
Anderson, Mark	General public interested in their finds	Iowa City and e-mails	FY 2011	Lithic tool identifications	12 office visits and 24 e-mails
Artz, Joe Alan	Associação Leonel Trindade, Sociedade de História Natural	Torres Vedras, Portugal	July 17, 2010	The Geology and Sedimentology of the Bolores Rockshelter and its Surrounding Landscape	25
Artz, Joe Alan	University of Iowa Dept. of Anthropology Brown Bag Series	Iowa City	Mar. 21, 2011	The Architecture of Ritual: the Creation of an Artificial Rockshelter Mortuary at Bolores, Torres Vedras, Portugal	10
Artz, Joe Alan, and Colleen Eck	University of Iowa Dept. of Geography	Iowa City	April 5, 2011	Class lecture on GIS Applications of the Iowa Site File	25
Barnett, Eleisha, and Teresa Rucker	Wapsipicon State Park Day Camp	Anamosa	June 16, 2011	Historic archaeology with Bowen's Prairie	88
Barnett, Eleisha, and Liz Fox	Humanities Iowa/ Iowa Archaeology Month	West Branch	August 6, 2010	Hooverfest	200
Collins, Angela	University of Iowa/ Office of State Archaeologist CRM class	Iowa City	April 25, 2011	"REX-East Archaeology and Site 23PI294" (presentation)	14
Collins, Angela	Iowa Valley RC&D	Statewide	July 2011	"Iowa Valley Scenic Byway Corridor" (brochure)	5000
Cordell, John, and Lynn Alex	Jackson County Conservation and Friends of Maquoketa Caves	Maquoketa	May 7, 2011	Tour to the Levensen Rockshelter	28
De la Garza, Mary	Office of State Archaeologist	Statewide/National	June-Sept., 2010	Archaeology on the Road web page hits	1628
Doershuk, John	Quad Cities Chapter: Iowa Archeological Society	Illinois	Mar. 29, 2011	The Battlefield and 'Black Hawk's Ravine': What Did We Learn By Trenching	45
Doershuk, John	Cornell College Archaeological Society	Mt. Vernon	Feb. 15, 2011	Charles R. Keyes and Iowa Archaeology	9
Doershuk, John	North Lee County Historical Society	Fort Madison	Dec. 14, 2010	The Battlefield and 'Black Hawk's Ravine': What Did We Learn By Trenching	75



Public Audio-Visual Presentations, Fiscal Year 2011, Continued

Staff Member	Sponsor	Location / Distribution	Date	Topic	Attendance, No. of copies
Doershuk, John, and John Hall	Iowa Public Radio: Talk at Ten	Statewide	July 22, 2010	Archaeology on the Road Talk of Iowa broadcast	15,400
Doershuk, John	Humanities Iowa/ Iowa Archaeology Month	Statewide	July 2010	25 Archaeology on the Road Radio Spots	30,000
Doershuk, John, Mary De la Garza, and Kevin Verhulst	Humanities Iowa/ Iowa Archaeology Month	Sioux City	July 24, 2010	Archaeology on the Road EXPO	1500
Doershuk, John, Mary De la Garza, Kevin Verhulst, and Jason and Jill Titcomb	Humanities Iowa/ Iowa Archaeology Month	Washta	July 25, 2010	Archaeology on the Road	1200
Doershuk, John, Mary De la Garza, Kevin Verhulst, and Mark Anderson	Humanities Iowa/ Iowa Archaeology Month	Grundy Center	July 29, 2010	Archaeology on the Road	500
Haury-Artz, Chérie	Indian Creek Nature Center class	Cedar Rapids	Aug. 10, 2010	Archaeology Class	18
Haury-Artz, Chérie	Open Doors Open Minds Conference	Cedar Rapids	Oct. 21, 2010	Archaeology Table – Archaeology as a career Sponsored by Grant Wood AEA	200
Haury-Artz, Chérie	Roosevelt School – ELP class	Iowa City	Oct. 25 and 29, 2010	Activities with students centered on using context to analyze artifacts	5
Haury-Artz, Chérie	Belin-Blank Center	Iowa City	Nov. 6, 2010	Native Americans of Iowa - class	11
Haury-Artz, Chérie	College for Kids – Grant Wood AEA	Cedar Rapids	July 12–23, 2010	Archaeology and North American Prehistory	16
Haury-Artz, Chérie	Belin Blank – Mexican Scholars Program	Iowa City	July 8, 2010	Tour of Office of State Archaeologist, flint knapping demonstration, atlatl throwing	15
Haury-Artz, Chérie	Workplace Learning Connection's Job Shadowing Program	Iowa City	Dec. 10, 2010	Tour of Office of State Archaeologist, and talk about careers in archaeology	5
Haury-Artz, Chérie	Tap Root Nature Program – Monday group	Iowa City	Dec. 13, 2010	Tour of Office of State Archaeologist	12
Haury-Artz, Chérie	IPTV - ICN Session	Iowa City	Mar. 29, 2011	Careers in Archaeology session with second graders in Fort Dodge, Iowa	25
Haury-Artz, Chérie	Workplace Learning Connection	Iowa City	Feb. 23, 2011	Job Shadow Tour of Office of State Archaeologist	2



Public Audio-Visual Presentations, Fiscal Year 2011, Continued

Staff Member	Sponsor	Location / Distribution	Date	Topic	Attendance, No. of copies
Haury-Artz, Chérie	Roosevelt School – ELP class	Iowa City	Mar. 2, 2011	Activity and discussion of how archaeologists work	5
Haury-Artz, Chérie	Central High School, DeWitt, Iowa	Iowa City	Mar. 25, 2011	Faunal analysis activity with a job shadow student	1
Haury-Artz, Chérie	Iowa City Central School District	Iowa City	Feb. 21, 2011	In Service on integrating archaeology into the curriculum for ELP teachers	7
Haury-Artz, Chérie	Wickiup Hill Outdoor Learning Center	Toddville	Feb. 12, 2011	Native American winter games and Snovsnake Workshop	20
Haury-Artz, Chérie	Mid-Prairie Elementary School	Wellman	Feb. 7, 2011	Presentation on Native American food and gardening plus training teachers about Native American games	30
Haury-Artz, Chérie	IPTV – ICN Session	Iowa City	Jan. 24, 2011	Careers in Archaeology – session with 2nd and 3rd grade students	25
Haury-Artz, Chérie	Roosevelt School – ELP class	Iowa City	Jan. 7, 2011	Tour of Office of State Archaeologist and laboratory work on lowaville materials	5
Haury-Artz, Chérie	Roosevelt School – ELP class	Iowa City	Apr. 1, 2011	Tour of Office of State Archaeologist and presentation on Native American Toys and Games	5
Haury-Artz, Chérie	Iowa Archaeological Society	Toddville	Apr. 9, 2011	Native American Toys and Games	85
Haury-Artz, Chérie	Job Shadow Tour of Office of State Archaeologist	Iowa City	Apr.20, 2011	Jobs in archaeology	4
Haury-Artz, Chérie	IPTV – ICN Session	Iowa City	May 4, 2011	Modern Methods in Archaeology	21
Haury-Artz, Chérie	Horn Elementary School ELP Class, #1	Iowa City	May 5, 2011	Tour of Office of State Archaeologist	8
Haury-Artz, Chérie	Horn Elementary School ELP Class, #2	Iowa City	May 12, 2011	Tour of Office of State Archaeologist	8
Hall, John	Office of State Archaeologist	International	FY 2011	Office of State Archaeologist Facebook page	252 likes
Hall, John, and Angela Collins	Iowa Archaeology Month	Statewide	July 2010	“Archaeology on the Road - 2010” booklet	1500
Hall, John, Alan Hawkins, Dan Higginbottom, and Matt Cretzmeyer	Humanities Iowa/Iowa Archaeology Month	Statewide	July 25–31, 2010	Team Archaeology	800



Public Audio-Visual Presentations, Fiscal Year 2011, Continued

Staff Member	Sponsor	Location / Distribution	Date	Topic	Attendance, No. of copies
Haury-Artz, Chérie, Joe Artz, Elisha Barnett, and Elizabeth Fox	Meskwi Pow Wow	Tama	Aug. 12-14, 2010	Archaeology Month Outreach Booth	150
Haury-Artz, Chérie, and Mark Anderson	Heritage Day at Pine Creek Grist Mill	Muscatine,	Sept. 18, 2010	Archaeology Outreach Booth – Native American Toys and Games and Flint Knapping Demonstration	50
Haury-Artz, Chérie, Mark Anderson, and Mike Perry	Bald Eagle Appreciation Days	Keokuk	Jan. 15-16, 2011	Archaeology Outreach Booth – Artifact Identification, Flint Knapping Demonstrations, and Native American Toys and Games	100
Hawkins, Alan	Clear Creek Amana High School	Tiffin	Nov. 16 and 17, 2010	Prehistory of North American and Iowa	75
Horgen, Daniel	Iowa Archeological Society	Wickiup Hill	Apr. 9, 2011	Charles R. Keyes Comstock Village Site (13WP11), A Reassessment	85
Horgen, Daniel	The University of Iowa Museum of Natural History	Iowa City	Mar. 27, 2011	Cabinet of Curiosities Identification Day	100
Perry, Michael	Des Moines County Historical Society	Burlington	Oct. 1, 2010	Native American artifacts in the museum vault	38
Ingalls, Marlin	Iowa Alumni Magazine	Iowa City/Statewide/ National	June 2010	Road Trip Through Iowa History	55,700
Ingalls, Marlin	Cedar Rapids Gazette	Iowa City/Statewide	Jan. 10, 2011	Tunnel Vision	76,622
Ingalls, Marlin	KCRG News Online: Business 380	Iowa City/Statewide	Jan. 12, 2011	Inside Iowa City Beer Caves: media hits	2000
Ingalls, Marlin	KCRG News	Iowa City/Statewide	Jan. 12, 2011	Inside Iowa City Beer Caves	250,000
Ingalls, Marlin	Cedar Rapids Gazette	Iowa City/Statewide	Jan. 12, 2011	Underground Iowa City	76,622
Ingalls, Marlin	KCRG News Online: Business 380	Iowa City/ Statewide	Jan. 13, 2011	Subterranean Brewery Caves Trip back in History hits	5,000
Ingalls, Marlin	KCRG News Online: Business 380	Iowa City/Statewide	Mar. 2, 2011	Hi-tech search begins for Iowa City's Brewery Tunnels hits	5,000
Ingalls, Marlin	Cedar Rapids Gazette	Iowa City/Statewide	Mar. 3, 2011	Search Begins for Iowa City Tunnels	76,622
Ingalls, Marlin	Bocce Ball Multimedia: YouTube	Iowa City/Statewide/ National	Mar. 20, 2011	The Beer Caves of Iowa City hits	1000
Ingalls, Marlin	Bocce Ball Multimedia	Iowa City Statewide/ National	Mar. 20, 2011	Cave of Forgotten Beers: Iowa City Beer Tunnels and Mysteries Underfoot Video hits	500
Ingalls, Marlin	Iowa City Press Citizen	Iowa City/Statewide	Mar. 26, 2011	Trek Below the City	14,356



Public Audio-Visual Presentations, Fiscal Year 2011, Continued

Staff Member	Sponsor	Location / Distribution	Date	Topic	Attendance, No. of copies
Ingalls, Marlin	Beer Iowa/YouTube (Internet) video	Iowa City/Statewide/National	Apr. 4, 2011	Beer Video#4: A Look at Iowa Beer Caves	1000
Ingalls, Marlin	Iowa City Press Citizen	Iowa City/Statewide	Sept. 1, 2011	Underground Tunnels in Iowa City Brew Dreams of Historical Attraction	14,356
Ingalls, Marlin	PATV Public Access—YouTube (Internet)	Iowa City/Statewide/National	Aug. 5, 2010	Iowa City Brewery Tunnels hits	4000
Ingalls, Marlin	PATV Public Access	Iowa City	Aug. 15, 2011	Iowa City Brewery Tunnels	11,000
Peterson, Cynthia	University of Iowa Anthropology Club	Iowa City	Oct. 3, 2010	Archaeology at the 1765–1820 Iowaville Village	15
Peterson, Cynthia	State Historical Society of Iowa	Iowa City	Dec. 2010 - Apr. 2011	Public lab volunteer opportunities on the Iowaville Village Site artifact assemblage	10
Peterson, Cynthia	Keokuk Area Convention and Tourism Bureau and Lee County Conservation Board	Keokuk	Jan. 15, 2011	Iowaville and Southeast Iowa Archaeology: the 1765–1820 Ioway Tribe Village	40
Peterson, Cynthia	Office of State Archaeologist	Iowa City	Mar. 4, 2011	Preliminary Findings from Iowaville, the 1765–1820 Ioway Tribe Village	40
Peterson, Cynthia	Linn County Conservation Board	Toddville	Mar. 15, 2011	Archaeology of Iowaville, the 1765–1820 Ioway Tribe Village	30
Peterson, Cynthia	Linn County Conservation Board and the Iowa Archaeological Society	Toddville	Apr. 9, 2011	Archaeology at the Patterson Trading Post to the Meskwaki	60
Peterson, Cynthia	Quad Cities Archaeological Society	Illinois	Apr. 26, 2011	Preliminary Findings from Iowaville, the 1765–1820 Ioway Tribe Village	25
Peterson, Cynthia, and Anton Till	State Historical Society of Iowa	Eldon	Oct-Nov, 2010	Public field volunteer opportunities at the Iowaville Village Site	150
Pope, Melody	University of Iowa	Iowa City	Mar. 31, 2011	Presentation on Historic Preservation and Section 106 to students in 044:125, EIA/NEPA	35
Pope, Melody	Indiana DNR, Spring Mill State Park	Indiana	June 14-20, 2010	Public Field School and Archaeology Weekend Excavations in the Pioneer Village for the “Acquiring History at Spring Mill State Park” HPF#21921-8	10–30
Pope, Melody	Indiana DNR, Spring Mill State Park	Spring Mill State Park, Mitchell, Indiana	Sept. 10, 2010	Indiana archaeology month public presentation “Presence of Owners Past” on excavations at the Munson Cabin, Spring Mill State Park, Pioneer Village	20



Public Audio-Visual Presentations, Fiscal Year 2011, Continued

<i>Staff Member</i>	<i>Sponsor</i>	<i>Location / Distribution</i>	<i>Date</i>	<i>Topic</i>	<i>Attendance, No. of copies</i>
Pope, Melody, and Angela Collins	Indiana DNR, Spring Mill State Park	Indiana	June 2011	"Archaeology at Spring Mill State Park" (brochure)	1500
Pope, Melody, and Angela Collins	Indiana DNR, Spring Mill State Park	Indiana	June 2011	"What Does Archaeology Tell Us About 19th Century Life at the Munson House?" (interpretive panel)	NA
Pope, Melody, and Angela Collins	Indiana DNR, Spring Mill State Park	Indiana	June 2011	"Archaeology Adds to the Historic Record for Spring Mill's Pioneer Village" (interpretive panel)	NA
Pope, Melody, and Angela Collins	Indiana DNR, Spring Mill State Park	Indiana	June 2011	"Archaeology and Education at Spring Mill Pioneer Village" (interpretive panel)	NA
Pope, Melody, and Bryan Kendall	Jones and Dubuque County Conservation Board	Cascade	Feb. 14, 2011	Presentation for Lost and Whitewater Canyon archaeology project to the Dubuque and Jones County Conservation boards on the survey project results by Bryan Kendall	25
Pope, Melody, and Bill Whittaker	WRA Wastewater Reclamation Authority	Des Moines	Apr. 19, 2011	Progress report presentation of Office of State Archaeologist's work at the Palace Site to the WRA Board	30-40
Schermer, Shirley	University of Iowa, CRM class	Iowa City	Mar. 21, 2011	Burial Protection: Laws and Processes	14
Schermer, Shirley	University of Iowa, Forensic Anthropology class, Osher Life-Long Learning	Iowa City	May 10, 17, and 24, 2011	3 class sessions on Forensic Anthropology	21
Schermer, Shirley	University of Iowa, field school students	Iowa City	May 31, 2011	Burial Protection: Laws and Processes	20-25
Whittaker, William	Wikipedia	Statewide/National	July 2010-June 2011	"Iowa Archaeology" article hits	7200
Whittaker, William	Wikipedia	Statewide/National	July 2010-June 2011	"Edgewater Park Site" article hits	6000
Whittaker, William	Wikipedia	Statewide/National	July 2010-June 2011	"Indians of Iowa" article hits	7500
Whittaker, William	Wikipedia	Statewide/National	July 2010-June 2011	"Iowa Archeological Society" article hits	1300
Whittaker, William	UI Dept Anthropology	Iowa City	May 27, 2011	Discussion of the Dee Norton Site	25



Appendix C: Papers Presented at Professional Meetings, Fiscal Year 2011

Staff Member	Conference	Location	Date	Paper Title
Anderson, Mark	Midwest Archaeological Conference	Bloomington, Indiana	October 22, 2010	Lithic Symposium presentation on the OSA Lithic Raw Material Assemblage
Anderson, Mark	Conference for Minnesota Archaeology	Inver Grove Heights, MN	February 18, 2011	A Claim Shanty and Sod Dugout Farmstead in Sac County, Early Euro-American Occupants on the Late Iowa Frontier
Artz, Joe Alan	Society for American Archaeology	Sacramento, California	April 2, 2011	Poster Paper: The Architecture of Ritual: the Creation of an Artificial Rockshelter Mortuary at Bolores, Torres Vedras, Portugal
Doershuk, John with Joe Artz, William Whittaker, and Cindy Peterson	Midwest Archaeological Conference	Bloomington, Indiana	October 22, 2011	Poster Paper: Investigating the Archaeological Context of the Original Fort Madison (13LE10) Battlefield and Black Hawk's Ravine
Doershuk, John	21st Annual War of 1812 in the West Symposium	General Daniel Bissell Home, St. Louis, Missouri	March 27, 2011	Investigating the Archaeological Context of the Original Fort Madison (13LE10) Battlefield and Black Hawk's Ravine
Kendell, Bryan	Society for American Archaeology	Sacramento, California	April 2, 2011	Experimental Replication of Usewear on Late Stone Age Microliths from Southern Africa
Kendell, Bryan, and William E. Whittaker	Central States Anthropological Society Meeting	Iowa City, Iowa	April 7, 2011	Midwestern Food Production for National Food Consumption: 19th Century Farming Practices in Iowa City, Iowa
Pope, Melody, and April Sievert	Midwest Archaeological Conference	Bloomington, Indiana	October 23, 2011	The Merchants' Mill: Rural Industry on the Indiana Frontier
Pope, Melody, and Anson Kritsch	Central States Archaeological Society	University of Iowa, Iowa City	April 9, 2011	Hidden in Stone: Plant Processing with Chert Implements in the Prehistoric Midwest
Riley, Melanie	The LAMAR Institute LiDAR for Archaeology Workshop	Ossabaw Island, Georgia	February 25, 2011	Workshop presentation: The Utility of LiDAR in Midwest Archaeology
Schermer, Shirley	National Association of Tribal Historic Preservation Officers	Green Bay, Wisconsin	August 9–10, 2010	Invited presenter for day-long workshop on NAGPRA
Thies, Meagan, and Joe Alan Artz	Society for American Archaeology	Sacramento, California	April 2, 2011	Poster Paper: GIS, Taphonomy, and the Artificial Cave Mortuary Site of Bolores, Torres Vedras (Portugal)



Appendix D: Publications Appearing in Print, Fiscal Year 2011

Staff Member	Journal or Book	Article or Chapter Title	Publication Date
Alex, Lynn	<i>Newsletter of the Iowa Archeological Society</i> 60(3):2	Crops of Ancient Iowa Web Gallery	2010
Collins, James	<i>The Annals of Iowa</i>	Review of Robert A. Birmingham's <i>Spirits of the Earth</i>	2011
Collins, James, and Rolfe Mandel	<i>Journal of the Iowa Archeological Society</i>	Archaeological Evaluation of the West Lobe of the Allen Fan Site—13HA385	2010
Doershuk, John	<i>Newsletter of the Iowa Archeological Society</i> 60(2):2	What Happened at Effigy Mounds national Monument?	2010
Doershuk, John, Lynn Alex, and Cherie Haury-Artz	<i>Newsletter of the Iowa Archeological Society</i> 60(3):6	On the Road with Team Archaeology	2010
Hall, John	<i>Newsletter of the Iowa Archeological Society</i> 60(2):2	RAGBRAI Team Archaeology	2010
Haury, Chérie	<i>Report on 2008 Archaeology at the Biesterfeldt Site (32RM1), Ransom County, North Dakota by George R. Holley, Michael G. Michlovic, and Rinita A. Dalan</i>	Appendix B: Faunal Remains from the Biesterfeldt Site, 32RM1	2011
Haurry, Chérie	<i>Newsletter of the Iowa Archeological Society</i> 60(3):2	Outreach at the 2010 Meskwaki Powwow	2010
Horgen, Daniel	<i>Newsletter of the Iowa Archeological Society</i> 60(2):8	What's the Point?	2010
Horgen, Daniel	<i>Newsletter of the Iowa Archeological Society</i> 60(3):8	What's the Point?	2010
Horgen, Daniel	<i>Newsletter of the Iowa Archeological Society</i> 60(4):8	What's the Point?	2010
Horgen, Daniel	<i>Newsletter of the Iowa Archeological Society</i> 61(1):8	What's the Point?	2011
Merry, Carl	<i>Plains Anthropologist</i> 55 (214):184–187	Review of Excavating Nauvoo: The Mormons and the Rise of Historical Archaeology in America, by Benjamin C. Pykles	2010
Perry, Michael	<i>Journal of the Iowa Archeological Society</i>	Analysis and commentary of Charles Keyes's <i>Keokuk Axes</i>	2010
Perry, Michael	<i>Newsletter of the Iowa Archeological Society</i> 60(3):4–5	Curating the Russ Campbell Archaeological Collection	2010
Pope, Melody	<i>The SAA Archaeological Record</i>	My Career as an Archaeologist, or "I Never Knew I Wanted to be an Archaeologist When I Grew Up"	2011



Publications Appearing in Print, Fiscal Year 2011, Continued

Staff Member	Journal or Book	Article or Chapter Title	Publication Date
Pope, Melody	<i>The 2003 Excavations at Tol-E Basi, Iran – Social Life in a Neolithic Village</i> , Deutsches Archäologisches Institut Eurasien Abteilung	A Microwear Study of Chipped Stone Tools	2010
Pope, Melody with April Sievert and Sheree Sievert	<i>International Journal of Historical Archaeology</i>	From Pioneer to Tourist: Public Archaeology at Spring Mill State Park	2011
Schermer, Shirley, Edi Shukriu, and Sylvia Deskaj	<i>The Routledge Handbook of Archaeological Human Remains and Legislation: An International Guide to Archaeological Human Remains</i>	Kosovo	2011
Verhulst, Kevin	<i>Newsletter of the Iowa Archeological Society</i> 60(2): 4–5	Dogg Knapping: Kevin Verhulst Discusses the Secrets of making Stone Points	2010
Whittaker, William, and John Doershuk	<i>Newsletter of the Iowa Archeological Society</i> 60(4):4–5	Where Were the Chemin des Voyageurs?	2010
William Whittaker, and William Green	<i>North American Archaeologist</i> 31(1)27–57	Early and Middle Woodland Earthwork Enclosures in Iowa	2010
William Whittaker, and Cindy L. Nagel	<i>Journal of the Iowa Archeological Society</i> 57: 1–14	Lost Fountains: When Des Moines Aspired to be the “City Beautiful”	2010



Appendix E:
Service as a Board, Commission, or Committee Member, Fiscal Year 2011

Staff Member	Board/Commission/Committee Name	Meeting Location	Date	Goal/Mission of Organization
Anderson, Mark	Student Program Committee, Iowa Academy of Science	Various	Bi-annually in January and April	Promote and supervise the student activities of the Iowa Junior Academy of Science (IJAS) in the area of pre-college science; act in partnership with the Director of the Iowa Junior Academy of Science in preparing the IJAS program for the Annual Academy Meeting; provide recognition and awards for secondary school students involved in student programs
Anderson, Mark	Big Sand Mound Preserve Board	Various	Bi-annually in March and October	Promote archaeological and geological research; preservation and public education outreach for the Big Sand Mound Preserve, Muscatine County
Alex, Lynn	Mississippi Valley Archaeology Center, Advisory Board	La Crosse, WI	4 times annually	Advise the Mississippi Archaeology Center in its efforts to research, preserve, and teach about the archaeological resources of the Upper Mississippi River region
Alex, Lynn	Iowa Archeological Society, Editorial Review Board, JIAS	NA	NA	Irregularly advise JIAS editor regarding submissions
Alex, Lynn	Iowa Museum Association Board, Education Committee Co-Chair	Varies	4 times annually	Represent IMA education committee on the IMA Board
Alex, Lynn	Project Archaeology National Advisory Team Member and Iowa Co-coordinator	Varies	Annually	Serve as sounding board and advisor for Project Archaeology's archaeology and heritage program
Alex, Lynn	Society for American Archaeology, Public Education Committee Iowa Coordinator	SAA Annual meeting location	Annually	Serve as conduit between the SAA and the state
Alex, Lynn	State Preserves Advisory Board	Des Moines	4 times annually	Advise the Iowa Department of Natural Resources on acquisition, dedication, and management of state preserves



Service as a Board, Commission, or Committee Member, Fiscal Year 2011, Continued

Staff Member	Board/Commission/ Committee Name	Meeting Location	Date	Goal/Mission of Organization
Artz, Joe Alan	Statemap Advisory Committee, chairperson	Neal Smith NWR, Prairie City	Annually	Advise Iowa Geological and Water Survey on geological mapping needs in the state
Artz, Joe Alan	Board of Directors, Plains Anthropological Society	Varies	Annually	Manage the affairs of the Plains Anthropological Society, including journal publication, web site, outreach, annual meeting, dues, and PAS policy and procedure decisions
Carlson, Richard	State Nominations Review Committee, State Historical Society of Iowa	Des Moines	3-4 times annually	Review and approve nominations for archaeological and architectural properties for listing on the National Register of Historic Places; review and approve archaeological and historic preservation grant applications
Cordell, John	University of Iowa Collections Coalition	Various University of Iowa campus locations	Monthly	Support UI educational, research, and service goals by encouraging and advancing the professional care, documentation, and study of artifacts, specimens, and documents in the collections located in the University community, to make the collections meaningful and accessible to members of the University and general public, and to encourage the professional growth and development of the administrators, curators, and keepers of the collections
Doershuk, John	Iowa Archeological Society	Iowa City and Des Moines	August 7, 2010, and March 26, 2011	Gather, record, publish, and interpret archaeological information statewide for all Iowans
Doershuk, John	University Research Council			Publications Waiver subcommittee and chair, Authorship Policy subcommittee
Doershuk, John	Register of Professional Archaeologists	NA	Irregular, via e-mail	Field School Certification Review Committee
Doershuk, John	Pentacrest Museums Review Committee	Iowa City	Multiple times during the academic year	Advise the Office of the Vice President for Research concerning options for the future of the Museum of Natural History and Old Capitol Museum
Hawkins, Alan	Iowa Archeological Society	Iowa City and Des Moines	August 7, 2010, and March 26, 2011	Gather, record, publish, and interpret archaeological information statewide for all Iowans
Horgen, Daniel	Association of Iowa Archaeologists	Varies	April 2, 2011 and June 4, 2011	Promote Iowa archaeological research; develop and refine guidelines for archaeological research; coordinate parties interested in or concerned about Iowa archaeology



Service as a Board, Commission, or Committee Member, Fiscal Year 2011, Continued

Staff Member	Board/Commission/Committee Name	Meeting Location	Date	Goal/Mission of Organization
Merry, Carl	State Nominations Review Committee, State Historical Society of Iowa	Des Moines	3-4 times annually	Review and approve nominations for archaeological and architectural properties for listing on the National Register of Historic Places; review and approve archaeological and historic preservation grant applications
Perry, Michael	Iowa Archeological Society	Iowa City	August 7, 2010	Gather, record, publish, and interpret archaeological information statewide for all Iowans
Peterson, Cynthia	Historic Contexts Committee of the Association of Iowa Archaeologists (AIA)	Marion	annually	Advise the AIA on efforts to develop historic contexts for use of archaeologists across the state
Schermer, Shirley	Iowa Archeological Society, Editorial Board, JIAS	NA	NA	Irregularly advise JIAS editor regarding submissions
Schermer, Shirley	Project Archaeology National Advisory Team Member and Iowa Co-coordinator	varies	annually	Serve as sounding board and advisor for Project Archaeology's archaeology and heritage program
Schermer, Shirley	DIG magazine, Advisory Board	NA	NA	Irregularly advise editor regarding submissions and upcoming issue topics
Schermer, Shirley	State Preserves Advisory Board, archaeological advisor to the board	NA	NA	Irregularly advise SPAB on archaeological and burial issues relating to state preserves
Schermer, Shirley	Society for American Archaeology, Public Education Committee, Coordinator for their State Network	Varies, SAA annual meeting location	Annually and as needed	Serve as conduit between the SAA and state network coordinators to promote awareness about and concern for the study of past cultures, and to engage people in the preservation and protection of heritage resources
Whittaker, William	Iowa Archeological Society	Varies	July 1, 2010 – March 1, 2011	Newsletter Editor, Board Member



Appendix F: Scientific Publications Produced by the Office of the State Archaeologist, Fiscal Year 2011

No.	Authors	Title (completed in FY 2011)
CCR 1665	Collins, Angela R., Melody Pope, Maria M. Tavaszi, Leslie Bush, Eric Menzel, Joe Alan Artz, and Andrew Sorensen	Chapter 4: Phase III Archaeological Evaluation of Site 23P1294 for the Rockies Express Pipeline-East (REX East) Project, Pike County, Missouri
CCR 1700	Pope, Melody K., Joseph A. Tiffany, Angela R. Collins, and Michael J. Perry (editors)	Cultural Resources of the Loess Hills: A Focus Study to Determine National Significance of Selected Archaeological Cultural Resources along the Loess Hills National Scenic Byway
CCR 1791 Supp.	Collins, Angela R., and Adam Newman	Archaeological Monitoring of a Portion of the Proposed Cedar Rapids Community Schools Administrative Building Project, Section 18, T83N-R7W, Linn County, Iowa
CCR 1799	Collins, Angela R., and Adam Newman	Phase II Site Testing at 13LN913, 13LN949, 13LN950, and 13LN954, at the Location of the Proposed Cedar Rapids Community School District Administration Building Project, Section 18, T83N-R7W, Linn County, Iowa
CCR 1800	Collins, Angela R., and Adam Newman	Phase I Intensive Archaeological Investigation of the Proposed Cattle Feedlot Improvement Project, Section 35, T75N-R4W, Louisa County, Iowa
CCR 1801	Peterson, Cynthia L., and Adam Newman	Phase I Intensive Archaeological Survey of a Proposed Tower Location (a.k.a., U.S. Cellular Mystic #392348), SW¼, SW¼, Section 16, T69N-R18W, Appanoose County, County, Iowa
CCR 1802	Christman, Carrie, and William E. Whittaker	Archaeological Testing for the Proposed Newbury Development Hotel, Des Moines, Polk County, Iowa
CCR 1803	Peterson, Cynthia L., Angela R. Collins, and Joe Alan Artz	Supplement to the Phase IA Archaeological Reconnaissance and Geoaarchaeological Assessment of the Proposed South Ottumwa Phase 3 Sewer Separation Project, City of Ottumwa, Wapello County, Iowa
CCR 1804	Sorensen, Andrew C., and Adam Newman	Phase I Intensive Archaeological Investigation of the Proposed Madison County Wetland Reclamation Project, of Section 18, T77N-R27W, and Section 13, T77N-R28W, Madison County, Iowa
CCR 1805	Till, Anton, and William E. Whittaker	Archaeological Monitoring of Sites 13PK36 and 13PK37 Along the Des Moines Metropolitan Wastewater Reclamation Authority Four Mile Interceptor Project, Phase 23, Segments 2 and 3, Section 33, T79N-R23W and Section 5, T78N-R23W, Des Moines, Polk County, Iowa
CCR 1806	Riley, Melanie, and Joe Alan Artz	Phase IA Archaeological Assessment of Proposed Flood Mitigation and Recovery Measures for the Power Plant and Water Plant, University of Iowa, Iowa City, Iowa
CCR 1807	Peterson, Cynthia L., and Adam Newman	Phase I Intensive Archaeological Investigation of a Proposed Culvert Extension Project at Palisades-Kepler State Park, Section 14, T82N-R6W, Linn County, Iowa



Scientific Publications Produced by the Office of the State Archaeologist, Fiscal Year 2011, Continued

No.	Authors	Title (completed in FY 2011)
CCR 1808	Kendall, Bryan	<i>Phase I Intensive Archaeological Investigation of the Proposed Moss Green Development Project at Iowa City, Sections 35 and 36, T80N-R6W, Johnson County, Iowa</i>
CCR 1809	Collins, Angela R., and Adam Newman	<i>Phase I Intensive Archaeological Investigation of the Proposed Housing Development Project in Fort Madison, Section 6, T67N-R4W, Lee County, Iowa</i>
CCR 1810	Peterson, Cynthia L., and Adam Newman	<i>Phase I Intensive Archaeological Investigation of a Tile Line Installation Project at Pine Lake State Park, Section 9, T87N-R19W, Hardin County, Iowa</i>
CCR 1811	Newman, Adam, and William E. Whittaker	<i>Determining the Location of Orr's Mound Group No. 6 (13CT52), Effigy Mounds National Monument, Clayton County, Iowa</i>
CCR 1812	Collins, Angela R., and Adam Newman	<i>Phase I Intensive Archaeological Investigation of the Proposed Bison Exhibit Construction Project, Sections 29 and 32, T81N-R25W, Polk County, Iowa</i>
CCR 1813	Sorensen, Andrew C.	<i>Phase I Intensive Archaeological Investigation of the Proposed Communications Tower Location (a.k.a., US Cellular Lacona #760858), Section 21, T74N-R22W, Warren County, Iowa</i>
CCR 1814	Sorensen, Andrew C.	<i>Phase I Intensive Archaeological Investigation of the Proposed Communications Tower Location (a.k.a. US Cellular Agency #392350), Section 36, T72N-R13W, Wapello County, Iowa</i>
CCR 1815	Collins, Angela R.	<i>Phase I Intensive Archaeological Investigation of a Proposed Tower Location (a.k.a. US Cellular Eldon 392349), NW¼ of Section 35, T71N-R12W, Wapello County, Iowa</i>
CCR 1816	Collins, Angela R.	<i>Phase I Intensive Archaeological Investigation of the Proposed Communications Tower Location (a.k.a. i wireless Geneseo #IL0056), Section 17, T17N-R3W, Henry County, Illinois</i>
CCR 1817	Kendall, Bryan	<i>Phase I Intensive Archaeological Survey of a Proposed Tower Location (a.k.a., Rockwell Cooperative Telephone Association #121-0013), Sections 32 and 33, T91N-R22W, Franklin County, Iowa</i>
CCR 1818	Kendall, Bryan	<i>Phase I Intensive Archaeological Survey of a Proposed Tower Location (a.k.a., US Cellular Northwood DT #434375), Section 29, T100N-R20W, Worth County, Iowa</i>
CCR 1819	Christman, Carrie, and William E. Whittaker	<i>Archaeological Testing at Site 13PK61 for the Sewer Expansion Line, Southeast Connector Project, Martin Luther King Jr. Parkway and SW 1st Street, Des Moines, Polk County, Iowa</i>
CCR 1820	Kendall, Bryan and Angela R. Collins	<i>Phase I Intensive Archaeological Investigation of a Proposed Tower Location (a.k.a., Cedar Wapsi Communications, Inc. South Shell Rock #014-0016), Section 29, T91N-R15W, Butler County, Iowa.</i>
CCR 1821	Collins, Angela R., and Bryan Kendall	<i>Phase I Intensive Archaeological Investigation of a Proposed Tower Location (a.k.a. Kalona Coop Telephone Wayland #073-0010), Section 3, T73N-R7W, Henry County, Iowa</i>
CCR 1822	Collins, Angela R., and Bryan Kendall	<i>Phase I Intensive Archaeological Investigation of a Proposed Tower Location (a.k.a., US Cellular Eldora #760784), Section 7, T87N-R19W, Hardin County, Iowa</i>



Scientific Publications Produced by the Office of the State Archaeologist, Fiscal Year 2011, Continued

No.	Authors	Title (completed in FY 2011)
CCR 1823	Pope, Melody K., and William E. Whittaker	Data Recovery Plan for Site 13PK966, WRA CSSSF, Polk County, Iowa
CCR 1824	Collins, Angela R.	Phase I Intensive Archaeological Investigation of the Proposed Pole Building Construction Project at the Port Louisa National Wildlife Refuge, Section 18, T74N-R2W, Louisa County, Iowa.
CCR 1825	Kendall, Bryan	Phase IA Archaeological Survey of a Proposed Animal Shelter Location, Section 22, T79N-R6W, Johnson County, Iowa
CCR 1826	Kendall, Bryan	Phase I Intensive Archaeological Survey of a Proposed ASAC Building Renovation with Geothermal Field, Section 31, T82N-R7E, City of Clinton, Clinton County, Iowa
CCR 1827	Collins, Angela R.	Phase IA Archaeological Assessment of a Proposed Iowa River Water Main Crossings Project in Iowa City, Sections 10 and 15, T79N-R6W, Johnson County, Iowa
CCR 1828	Kendall, Bryan	Supplement to the Archaeological Monitoring of the FEMA Park View Terrace Subdivision Demolition Project, Iowa City, Johnson County, Iowa
CCR 1829	Kendall, Bryan	Archaeological Monitoring of a Proposed Flood Project (Pump Vault Pit) for Art Building West, University of Iowa Project #0131601, Iowa City, Johnson County, Iowa
CCR 1830	Sorensen, Andrew C.	Phase IA Archaeological Reconnaissance of an Abandoned Coal Mine Reclamation Project Area (a.k.a. Groenendyk Site), Section 5, T75N-R16W, Mahaska County, Iowa
CCR 1832	Merry, Carl A.	Annual Report of the University of Iowa Highway Archaeology Program for the Calendar Year 2010.
CCR 1833	Collins, Angela R.	Phase I Intensive Archaeological Investigation of the Proposed Sewer Improvement Project, Sections 30 and 31, T65N-R04W, and Sections 25 and 36, T65N-R05W, Lee County, Iowa
CCR 1834	Collins, Angela R., and Bryan Kendall	Phase I Intensive Archaeological Investigation of the Proposed Tower Location Project (a.k.a. USC Tama East #760831), Section 26, T83N-R15W, Tama County, Iowa
CCR 1835	Collins, Angela R.	Phase I Intensive Archaeological Investigation of Three Proposed Bridge Replacements, Sections 7 and 12 of T70N-R09W, Sections 18 and 7 of T70N-R08W, and Section 32 of T68N-R09W, Van Buren County, Iowa
CCR 1836	Rickers, Christy, and Angela R. Collins	Phase I Intensive Archaeological Investigation of the Proposed Apartment Construction Project, Section 24, T79N-R43W, Harrison County, Iowa
CCR 1837	Collins, Angela R.	Phase I Intensive Archaeological Survey of an Abandoned Coal Mine Reclamation Project Area (a.k.a. Shinn Site), Section 8, T75N-R19W, Marion County, Iowa
CCR 1838	Collins, Angela R.	Phase I Intensive Archaeological Investigation of a Proposed Iowa River Water Main Crossings Project in Iowa City, Section 15, T79N-R6W, Johnson County, Iowa



Scientific Publications Produced by the Office of the State Archaeologist, Fiscal Year 2011, Continued

No.	Authors	Title (completed in FY 2011)
CCR 1839	Kendall, Bryan	<i>Phase I Intensive Archaeological Investigation of the Proposed Art Building Construction Project, University of Iowa, Section 9, T79N-R6W, Johnson County, Iowa</i>
CCR 1840	Rickers, Christy	<i>Phase IA Reconnaissance Survey of the Proposed Fence Replacement Project at the State Forest Nursery, Sections 13 and 14, T83N-R24W, Story County, Iowa</i>
CCR 1841	Rickers, Christy	<i>Phase I Intensive Archaeological Investigation of a Proposed Sanitary Sewer Project, Gull Point State Park, Sections 24 and 25, T99N-R37W, Dickinson County, Iowa</i>
CCR 1842	Kendall, Bryan	<i>Phase I Intensive Archaeological Investigation of the Proposed Tower Location Project (Modern Cooperative Telephone Company, Richland 095-0012), Section 27, T74N-R10W, Keokuk County, Iowa</i>
CCR 1843	Rickers, Christy	<i>Phase I Intensive Archaeological Investigation for a Proposed New Picnic Shelter, Stone State Park, Section 1, T89N-R48W, Woodbury County, Iowa</i>
CCR 1844	Rickers, Christy	<i>Phase I Intensive Archaeological Investigation for Proposed Lake of Three Fires State Park Trail Modifications, Sections 1 and 12, T68N-R34W, Taylor County, Iowa</i>
CCR 1845	Kendall, Bryan	<i>Phase I Intensive Archaeological Investigation of the Proposed Storage Building Project, Green Island Wildlife Management Area, Section 29, T85N-R6E, Jackson County, Iowa</i>
CCR 1846	Kendall, Bryan	<i>Phase I Intensive Archaeological Investigation of the Proposed Campground Improvement Project, Lake Darling State Park, Section 28, T74N-R09W, Washington County, Iowa</i>
CCR 1847	Kendall, Bryan	<i>Phase IA Archaeological Investigation of the Proposed Bike Trail Project, George Wyth State Park, Sections 7, 8, 9, 16, and 18, T89N-R13W, Black Hawk County, Iowa</i>
CCR 1848	Artz, Joe Alan, Caroline A. Davis, and Glenn R. Storey	<i>Geophysical Survey in the Vicinity of the Old Third Street Cemetery Site (13DB476), City of Dubuque, Iowa</i>
CCR 1849	Rickers, Christy	<i>Phase I Intensive Archaeological Investigation of Proposed Campground Improvements and Borrow Area, Volga River State Recreation Area, Sections 3, 10, and 14, T93N-R8W, Fayette County, Iowa</i>
CCR 1850	Kendall, Bryan	<i>Phase I Intensive Survey of the Proposed Wetland Reclamation Project, Section 25, T97N-R20W, Cerro Gordo County, Iowa</i>
CCR 1852	Sievert, April and Melody K. Pope	<i>Acquiring History at Spring Mill State Park, Archaeological Investigations at Spring Mill Historical Site (12Lr1101), Lawrence County, Indiana</i>
CCR 1853	Kendall, Bryan	<i>Phase I Intensive Archaeological Investigation of the Proposed Animal Shelter Project, Section 22, T79N-R6W, Johnson County, Iowa</i>
CCR 1854	Kendall, Bryan	<i>Phase I Intensive Archaeological Investigation of the Proposed Wetland Reclamation Project, Muskrat Slough Wildlife Management Area, Section 17, T83N-R3W, Jones County, Iowa</i>



Scientific Publications Produced by the Office of the State Archaeologist, Fiscal Year 2011, Continued

No.	Authors	Title (completed in FY 2011)
CCR 1855	Collins, Angela R.	Phase IA Archaeological Reconnaissance Survey of an Abandoned Coal Mine Reclamation Project Area (a.k.a. Harris Site), Section 5, T73N-R17W, Monroe County, Iowa
CCR 1856	Collins, Angela R.	Phase IA Archaeological Reconnaissance Survey of an Abandoned Coal Mine Reclamation Project Area (a.k.a. Shafer Site), Section 27, T73N-R15W, Wapello County, Iowa
CCR 1857	Rickers, Christy	Phase I Intensive Archaeological Investigation of the Proposed Improvements at Lake Anita State Park, Sections 28, 29, and 33, T77N-R34W, Cass County, Iowa
CCR 1858	Collins, Angela R.	Phase IA Archaeological Review of the Proposed Fiber Optic Utility Project within the Meskwaki Settlement, Sections 13 and 14 of T83N-R15W and Sections 18, 19, 20, 29, and 30 of T83N-R16W, Tama County, Iowa
CCR 1859	Collins, Angela R. and Joe Alan Artz	Phase I Intensive Archaeological Investigation of the Proposed University of Iowa Hancher Building Replacement Project, Section 10, T79N-R06W, Johnson County, Iowa
CCR 1860	Artz, Joe, Alan, and Cynthia Peterson	Phase IA Geomorphological and Archaeological Assessment of Credit Island, City of Davenport, Scott County, Iowa
CCR 1861	Kendall, Bryan	Phase I Intensive Archaeological Investigation of the Proposed Tower Location Project (USC Madison Avenue #392351), Section 31, T72N-R13W, Wapello County, Iowa
CCR 1862	Collins, Angela R.	Phase I Intensive Archaeological Investigation of the Proposed Tower Project (U.S. Cellular Greene II 434380), Section 36, T94N-R17W, Floyd County, Iowa
CCR 1863	Rickers, Christy	Phase I Intensive Archaeological Investigation of a Proposed Road Reconstruction and Associated Borrow Ditch at Springfield State Park, Sections 4 and 5, T80N-R31W, Guthrie County, Iowa
CCR 1864	Kendall, Bryan	Phase I Intensive Archaeological Investigation of the Proposed E911 Tower Project, Section 27, T86N-R01W, Jones County, Iowa
CCR 1865	Kendall, Bryan	Phase I Intensive Archaeological Investigation of the Proposed Road Improvement Projects, Backbone State Park, Sections 4 and 9, T90N-R6W, Delaware County, Iowa
CCR 1868	Artz, Joe Alan	A Geoarchaeological Overview of South Dakota and Draft Guidelines For the Identification and Evaluation of Buried Archaeological Sites
CCR 1869	Riley, Melanie, Chad Goings, and Joe Alan Artz	Archaeological Modeling for the Iowa Portion of the Proposed Rock Island Clean Line Transmission System
CCR 1871	Peterson, Cynthia	Progress Report on an Archaeological Survey of a Portion of Foothills Park at the Glenwood Archaeological State Preserve, Mills County, Iowa
CCR 1874	Peterson, Cynthia, Lynn Alex, and Joe Alan Artz	Iowa Valley Scenic Byway Corridor Management Plan



Scientific Publications Produced by the Office of the State Archaeologist, Fiscal Year 2011, Continued

No.	Authors	Title (completed in FY 2011)
PCR 33, 12	Hedden, John G.	A Phase I Archaeological Survey of Primary Roads Project BRF-141-5(18)--38-39, a.k.a. PIN 09-39-141-020, Guthrie County, Iowa
PCR 33, 13	Shields, Wm. Lane	A Phase I Archaeological Survey of Primary Roads Project BRF-141-4(35)--38-14, a.k.a. PIN 09-14-141-060, Carroll County, Iowa
PCR 33, 14	Collins, James M.	A Phase I Archaeological Survey of Primary Roads Project NHSN-018-9(92)--2R-22, Clayton County, Iowa
PCR 33, 15	Hedden, John G.	A Phase I Archaeological Survey of Primary Roads Project BRF-141-5(19)--38-39, a.k.a. PIN 09-39-141-020, Guthrie County, Iowa
PCR 33, 16	Anderson, Mark L.	A Phase I Archaeological Survey of Primary Roads Project IMN-035-2(358)54--OE-91, Warren County, Iowa
PCR 33, 18	Horgen, Daniel G.	A Phase I Archaeological Survey of Primary Roads Project NHSX-330-2(75)--3H-64, Marshall County, Iowa
PCR 33, 19	Hedden, John G.	A Phase I Archaeological Survey of Primary Roads Project BRF-141-5(22)--38-39, a.k.a. PIN 10-39-141-010, Guthrie County, Iowa
PCR 33, 20	Anderson, Mark L.	A Phase I Archaeological Survey of Primary Roads Project IMN-035-2(400)67--OE-91, Polk County, Iowa
PCR 33, 21	Anderson, Mark L.	A Phase I Archaeological Survey of Primary Roads Project IMN-035-2(401)67--OE-91, Warren County, Iowa
PCR 33, 22	Hawkins, Alan J.	A Phase I Archaeological Survey of Primary Roads Project IMX-029-6(192) & (193)--02-67, a.k.a. PIN 07-10-150-010, Monona County, Iowa
PCR 33, 23	Hedden, John G.	A Phase I Archaeological Survey of Primary Roads Project NHSN-071-2(43)--2R-69, a.k.a. PIN 10-69-071-010, Montgomery County, Iowa
PCR 34, 1	Collins, James M.	A Phase I Archaeological Survey of Primary Roads Project STPN-5-4(33)--2J-91, Warren County, Iowa
PCR 34, 2	Anderson, Mark L.	A Phase I Archaeological Survey of Primary Roads Project BRFN-024-1(22)--39-19, Chickasaw County, Iowa
PCR 34, 3	Shields, Wm. Lane	A Phase I Archaeological Survey of Primary Roads Project BRF-034-3(37)--38-02, a.k.a. PIN 09-02-034-010, Adams County, Iowa
PCR 34, 4	Ramirez, Eloise R.	A Phase I Archaeological Survey of Primary Roads Project BRF-092-2(36)--38-15, a.k.a. PIN 09-15-092-010, Cass County, Iowa
PCR 34, 5	Shields, Wm. Lane	A Phase I Archaeological Survey of Primary Roads Project ER-063-3(81)--28-62, Mahaska County, Iowa
PCR 34, 6	Ramirez, Eloise R.	A Phase I Archaeological Survey of Primary Roads Project STPN-3-1(86)--2J-75, a.k.a. PIN 05-75-003-010, Plymouth County, Iowa

CCR = Contract Completion Report

PCR = Project Completion Report

