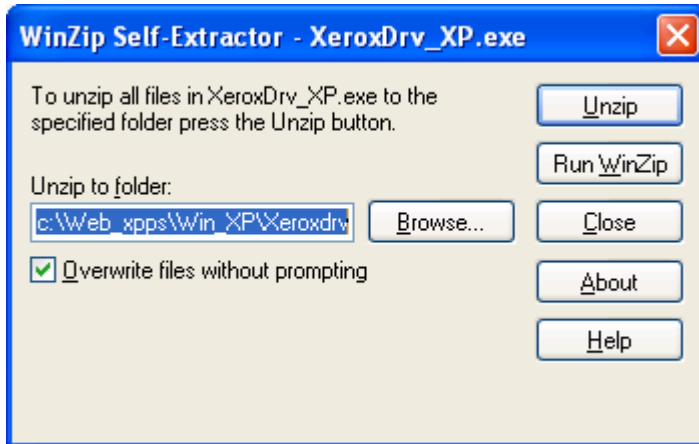


Please Contact your IT System Administrator for installation

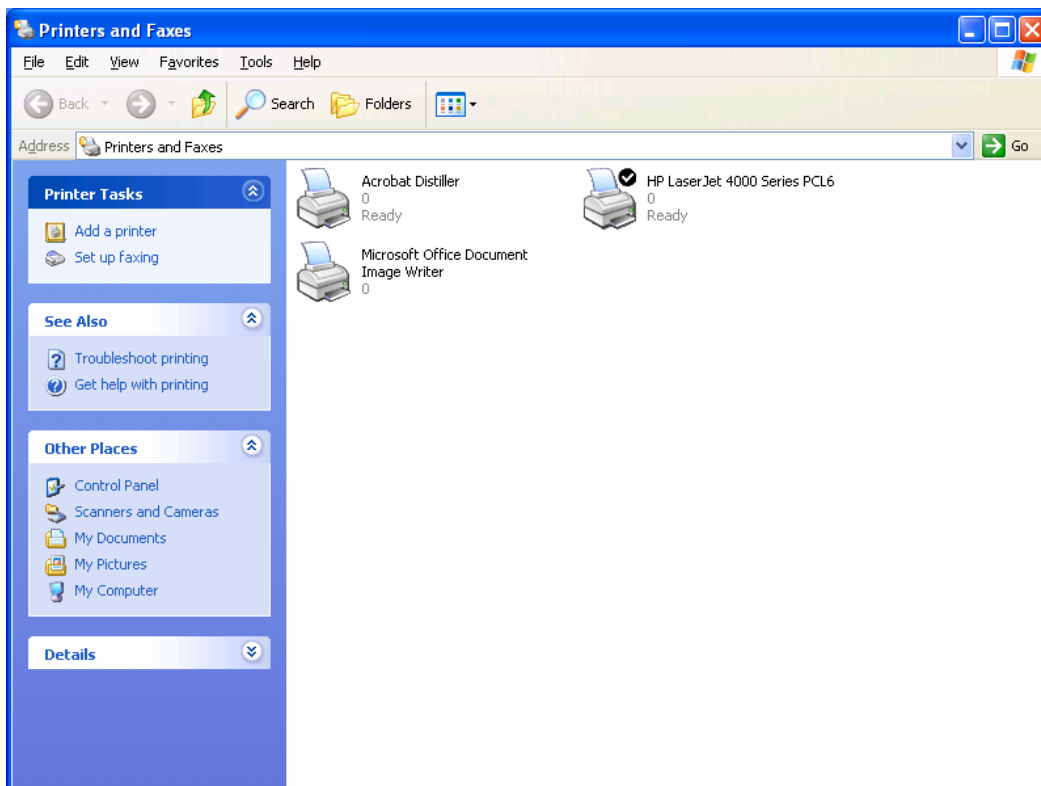
Copy Center 3 at PBB Xerox DocuTech 6100 driver installation instructions on Microsoft Windows XP

Prior to installation, drivers may be downloaded from www.printing.uiowa.edu and extracted to hard drive

Extract drivers to default folder as shown in the example below, or choose a folder on your hard drive to extract to. The example uses the Windows XP driver.



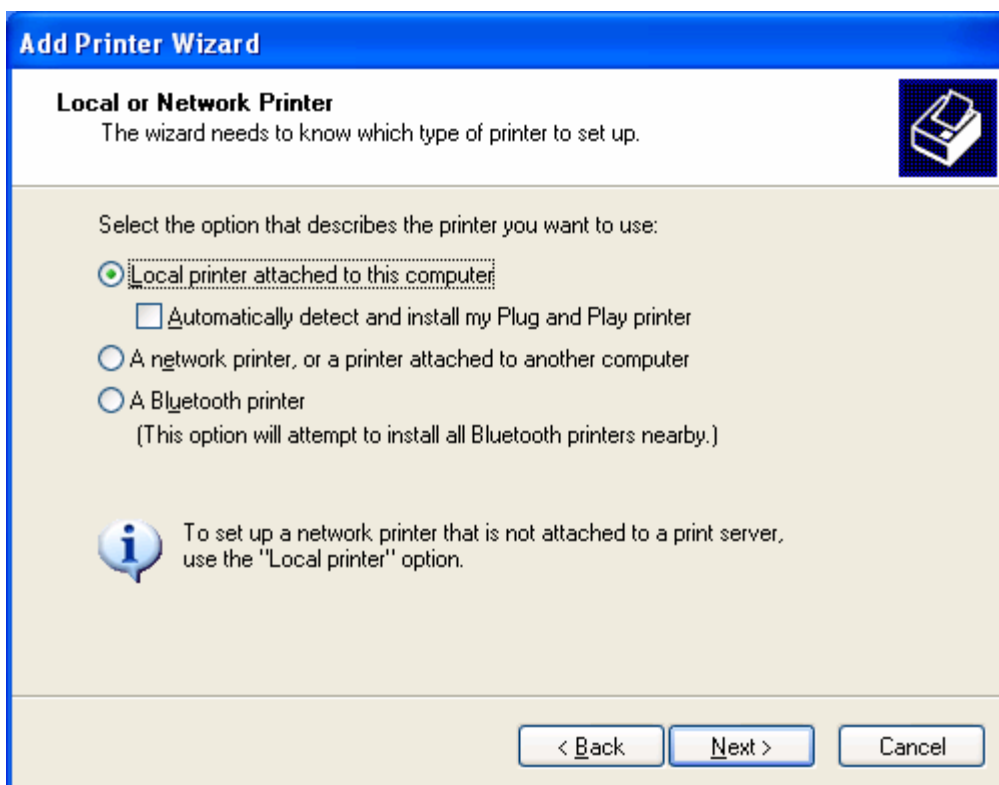
Click *Start*, then *Printers and Faxes* to open the printer's management window.



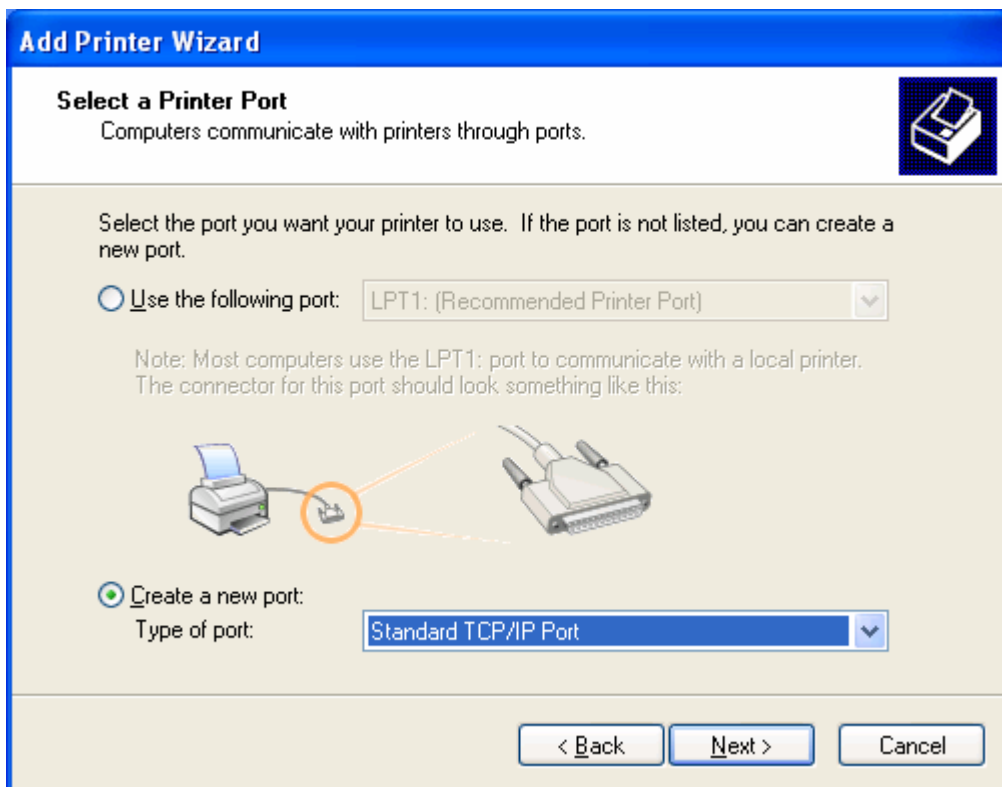
Click *Add a printer* from the Printer Tasks pane to the left



Click *Local Printer attached to this computer*, then *Next*



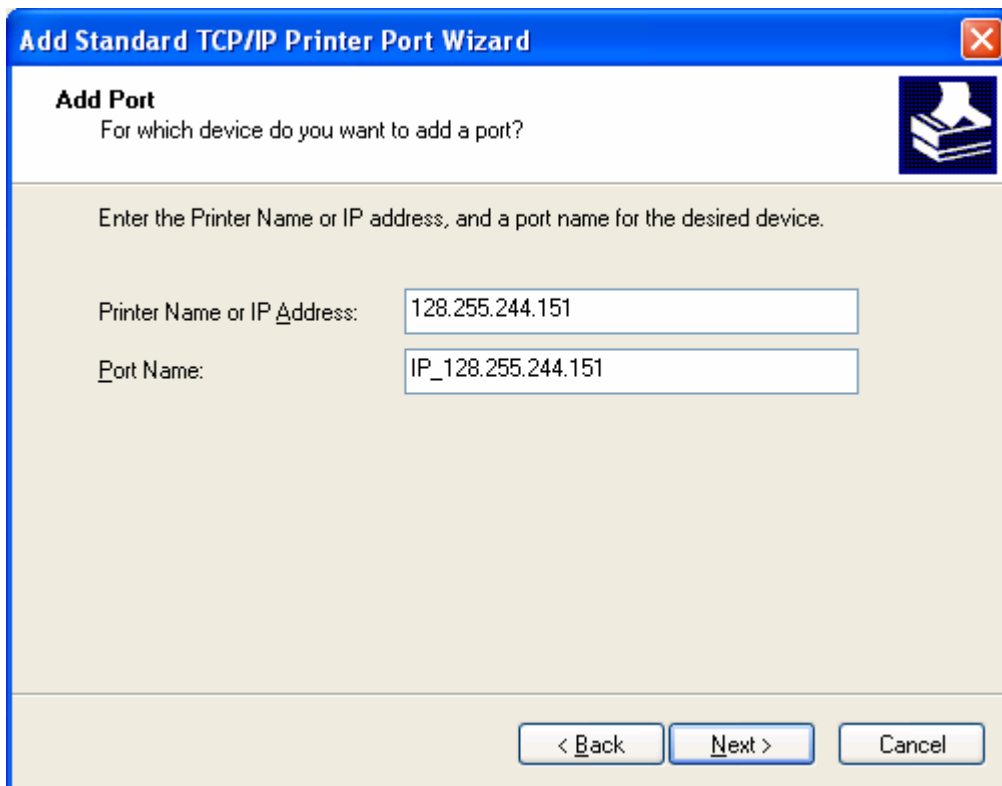
Then, click to *Create a new port:* and select *Standard TCP/IP Port* from the dropdown



This opens the Add Standard TCP/IP Printer Port Wizard, click *Next*



Type in the IP address of **128.255.244.151** in the Printer Name or IP Address field
Leave the port name alone, it will be filled automatically.



Add Standard TCP/IP Printer Port Wizard

Add Port
For which device do you want to add a port?

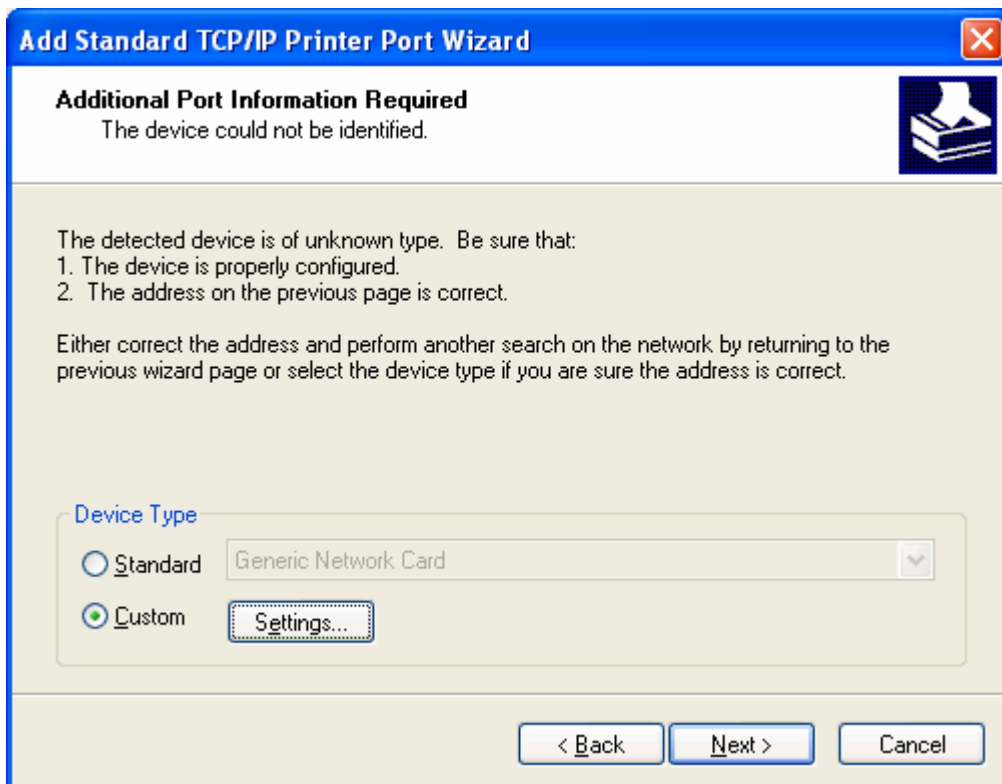
Enter the Printer Name or IP address, and a port name for the desired device.

Printer Name or IP Address: 128.255.244.151

Port Name: IP_128.255.244.151

< Back Next > Cancel

Next, click **Custom**, then **Settings**



Add Standard TCP/IP Printer Port Wizard

Additional Port Information Required
The device could not be identified.

The detected device is of unknown type. Be sure that:

1. The device is properly configured.
2. The address on the previous page is correct.

Either correct the address and perform another search on the network by returning to the previous wizard page or select the device type if you are sure the address is correct.

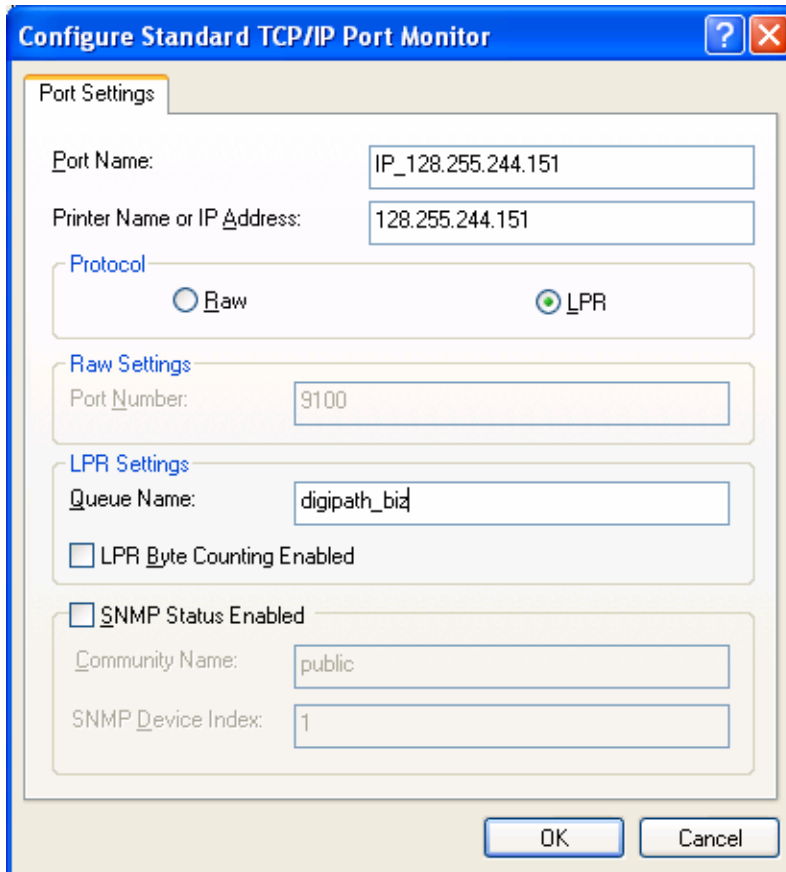
Device Type

Standard Generic Network Card

Custom Settings...

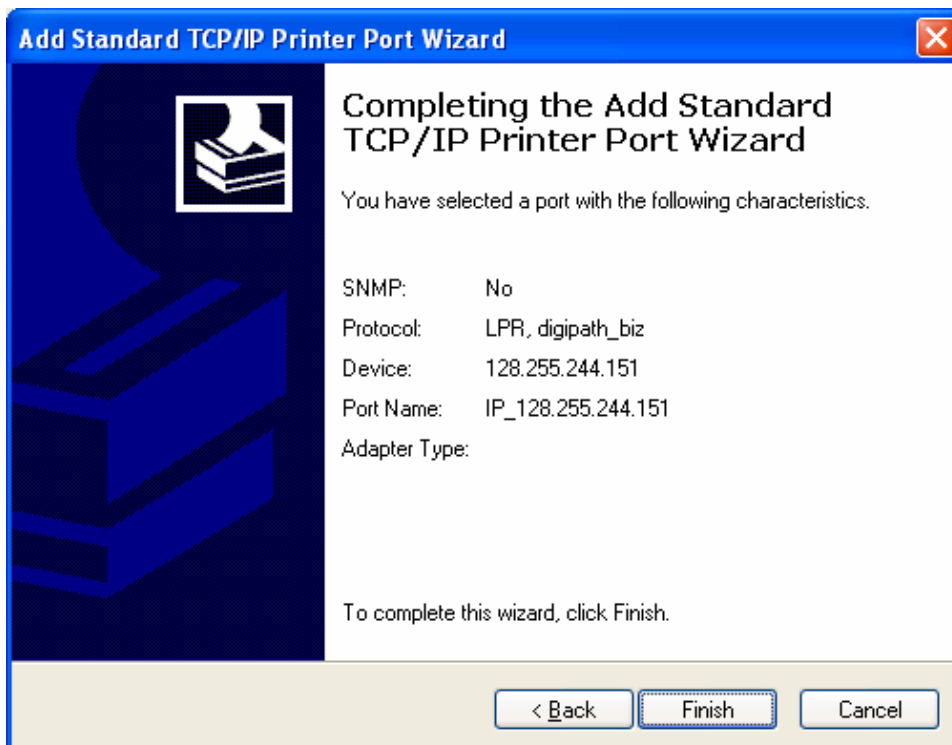
< Back Next > Cancel

Make sure the Protocol is set to **LPR**, and then add the queue name of **digipath_biz** to the **Queue Name:** field. Click **OK**.



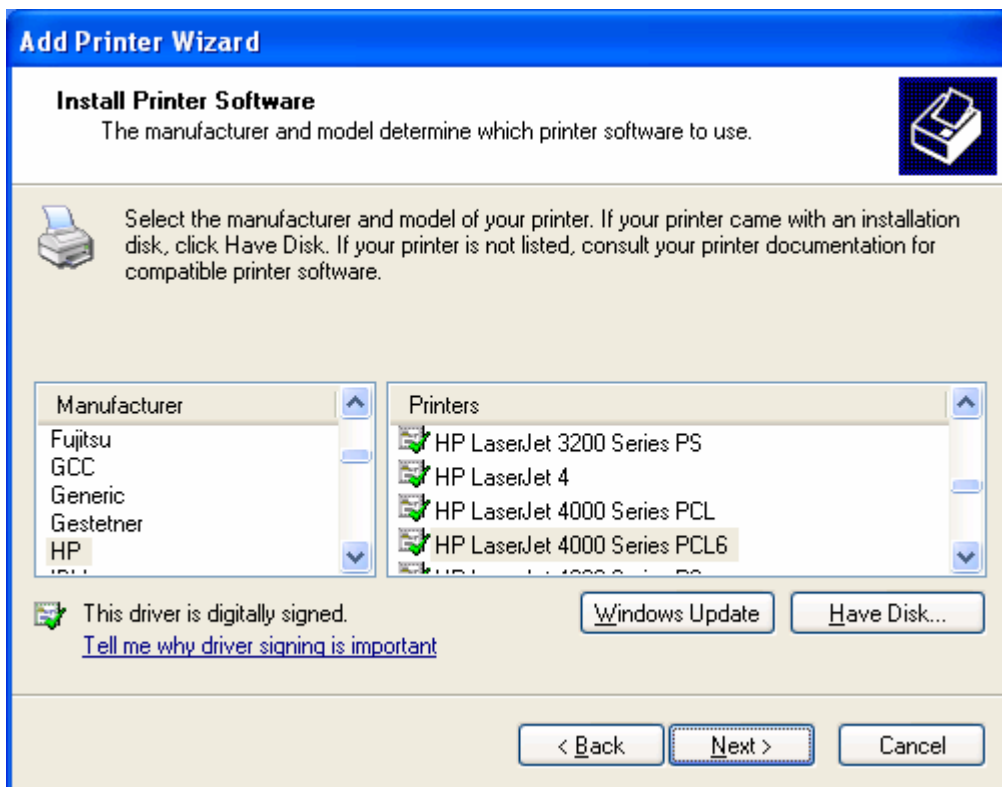
The screenshot shows the 'Configure Standard TCP/IP Port Monitor' dialog box. The 'Port Settings' tab is active. The 'Port Name' field contains 'IP_128.255.244.151' and the 'Printer Name or IP Address' field contains '128.255.244.151'. Under the 'Protocol' section, the 'LPR' radio button is selected. The 'Raw Settings' section has 'Port Number' set to '9100'. The 'LPR Settings' section has 'Queue Name' set to 'digipath_biz'. There are checkboxes for 'LPR Byte Counting Enabled' and 'SNMP Status Enabled', both of which are currently unchecked. The 'Community Name' field is set to 'public' and the 'SNMP Device Index' field is set to '1'. 'OK' and 'Cancel' buttons are at the bottom.

Then, click **Next**. From the Add Standard TCP/IP Printer Port window, then finish.

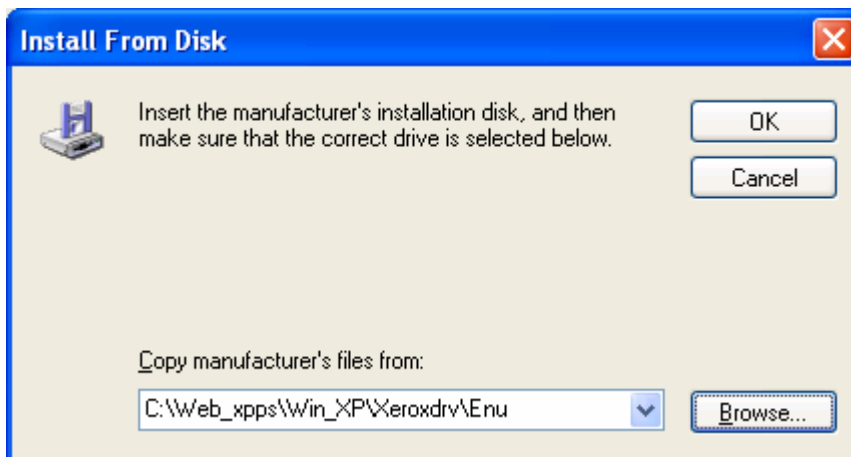


The screenshot shows the 'Add Standard TCP/IP Printer Port Wizard' dialog box. The title bar reads 'Add Standard TCP/IP Printer Port Wizard'. The main area has a printer icon and the text 'Completing the Add Standard TCP/IP Printer Port Wizard'. Below this, it says 'You have selected a port with the following characteristics.' and lists the following details: 'SNMP: No', 'Protocol: LPR, digipath_biz', 'Device: 128.255.244.151', and 'Port Name: IP_128.255.244.151'. The 'Adapter Type:' field is empty. At the bottom, it says 'To complete this wizard, click Finish.' and has '< Back', 'Finish', and 'Cancel' buttons.

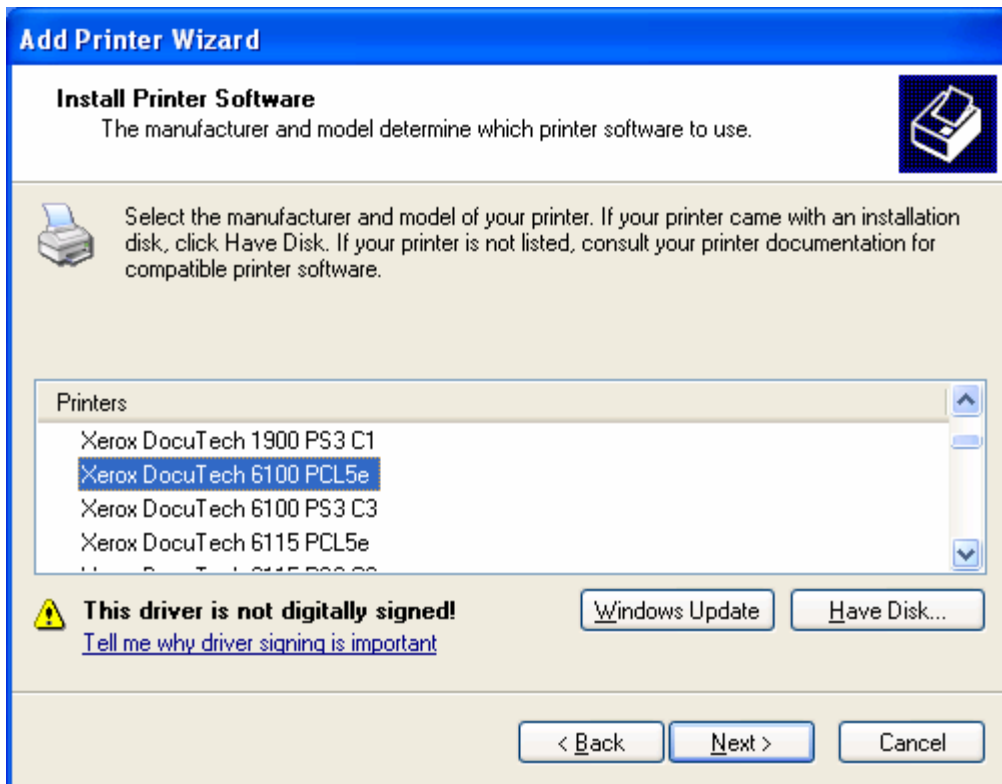
Click *Have Disk...*



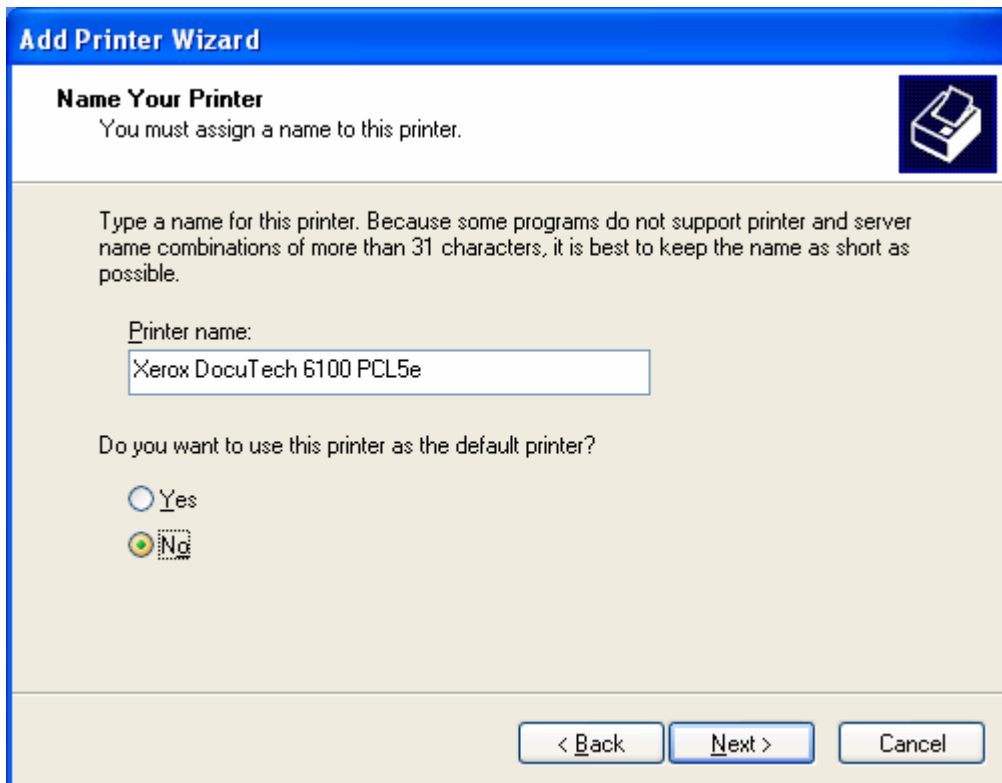
Browse to the path where you extracted the drivers to. The default for Windows XP is shown in the following screen shot



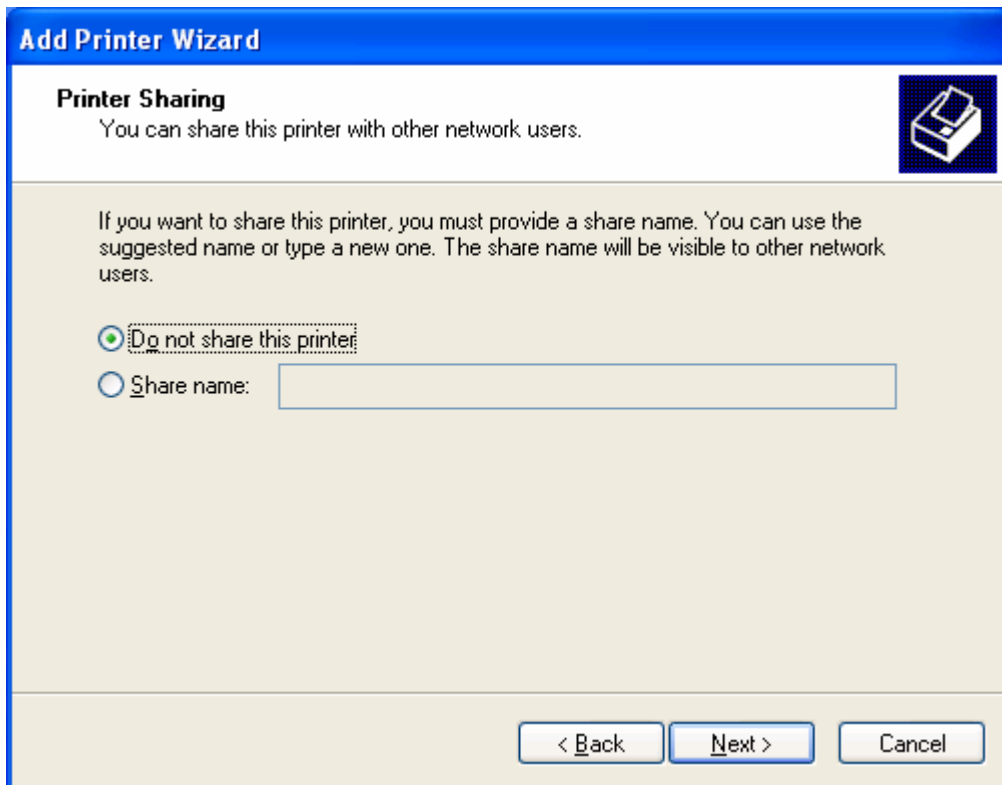
Choose *Xerox DocuTech 6100 PCL 5e* from the Printers selection



You may want to check to not have this as your default printer on this screen. You may name it anything you want, for example, something useful like *Copy Center 3 DocuTech*



Leave the print sharing set to *Do not share this printer*



Add Printer Wizard

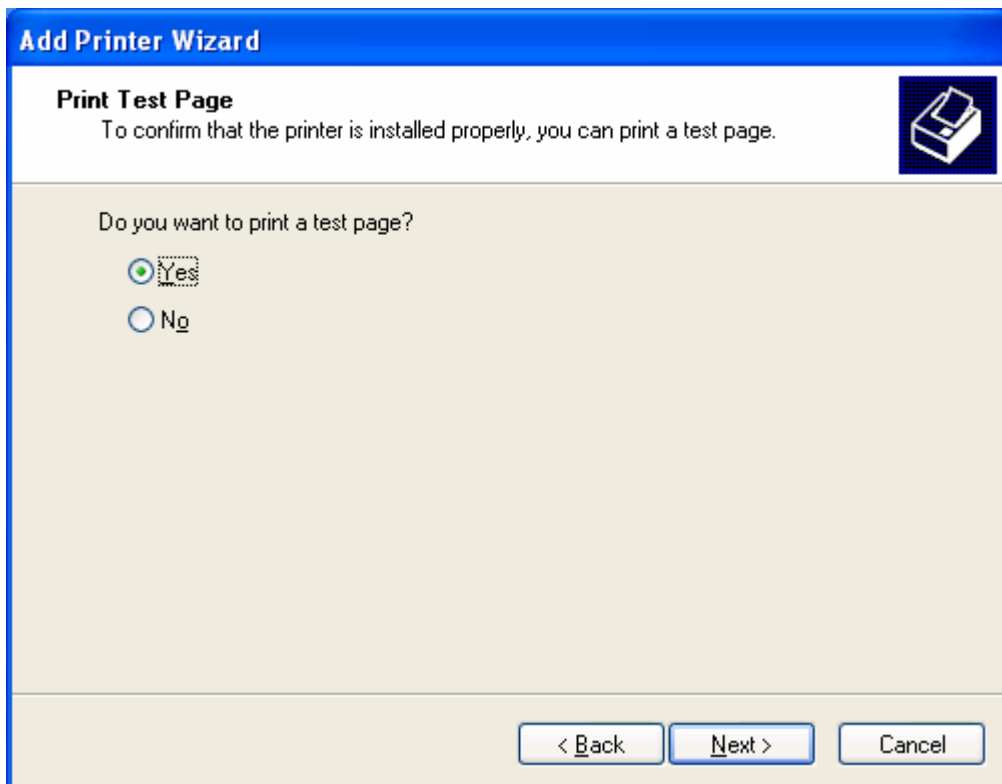
Printer Sharing
You can share this printer with other network users.

If you want to share this printer, you must provide a share name. You can use the suggested name or type a new one. The share name will be visible to other network users.

Do not share this printer.
 Share name:

< Back Next > Cancel

You may leave the test page set to *Yes*, then call the copy center to make sure it printed correctly. Copy Center #3 at PBB (319) 335-0861



Add Printer Wizard

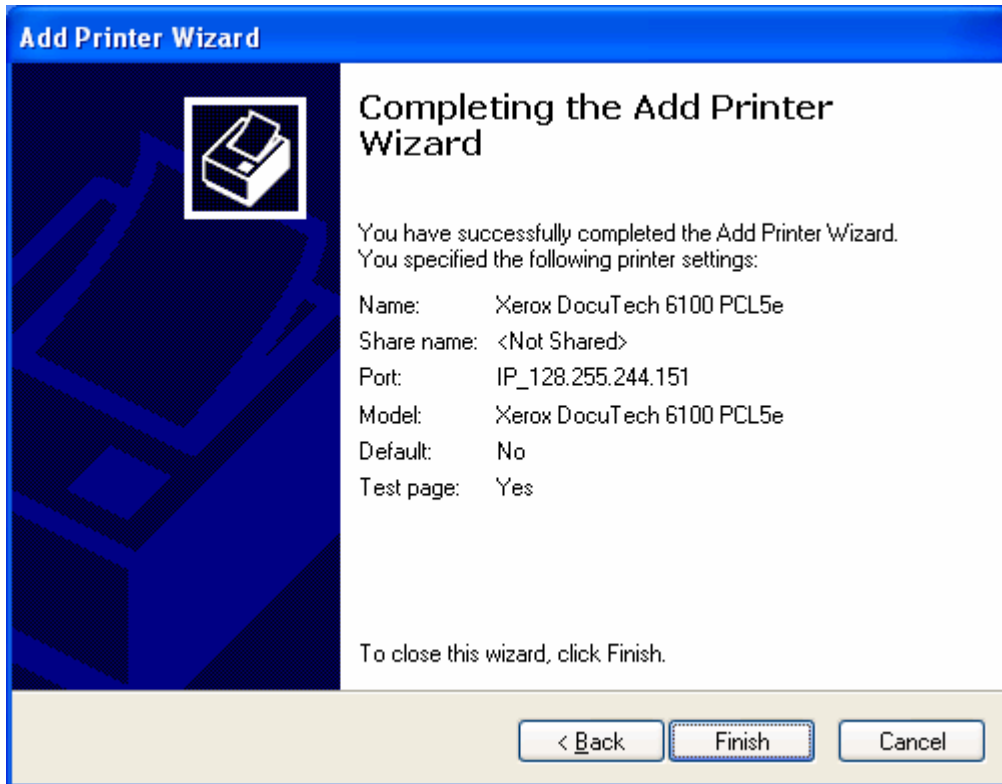
Print Test Page
To confirm that the printer is installed properly, you can print a test page.

Do you want to print a test page?

Yes
 No

< Back Next > Cancel

Then, click Finish. Your driver will be installed and your test page will be sent to the DocuTech if everything worked correctly.



You may see the following message after clicking Finish. If you do, click Continue Anyway. This message is informing you that the driver has not been verified by Microsoft Windows Log testing for compatibility with Windows.

